



Old Brompton Road  
Earls Court, SW5

CHESTERTONS





A beautifully appointed red brick Mansion block apartment with lift located in Earls Court.

The property comprises of two double bedrooms, two bathrooms (one en-suite), a light and bright reception room and a fully fitted separate kitchen. Attention to detail has been noted throughout this flat incorporating high quality fixtures and fittings, high ceilings, triple glazed windows, ornamental fire place and oak wood floors balcony.

Located close to Bousfield school and moments from Earls Court as well as close to all the boutiques, restaurants and transport links of Gloucester Road and South Kensington.

- 2 beds 2 baths
- Raised ground floor apartment
- Red brick mansion block
- Double glazed windows
- Over 900 square feet

**£3,497 pcm**

Additional tenant charges apply (fees apply to non-AST tenancies only)

Tenancy Agreement Fee: £300

References per Tenant/Guarantor: £60

Inventory check (approx. £100 – £250 inc. VAT)

[chestertons.co.uk/property-to-rent/applicable-fees](http://chestertons.co.uk/property-to-rent/applicable-fees)

| Energy Efficiency Rating |   | Current | Potential |
|--------------------------|---|---------|-----------|
| 90-100                   | A |         |           |
| 81-89                    | B |         |           |
| 72-80                    | C | 73      | 80        |
| 63-71                    | D |         |           |
| 54-62                    | E |         |           |
| 45-53                    | F |         |           |
| 35-44                    | G |         |           |

Not energy efficient - higher running costs

EU Directive 2002/91/EC

England, Scotland & Wales

**Minimum Term:** 12 months  
**Deposit Required:** £4,035.00  
**Local Authority:** Royal Borough of Kensington & Chelsea  
**Council Tax Band:** E  
**EPC Rating:** C  
**Part Furnished, Unfurnished**

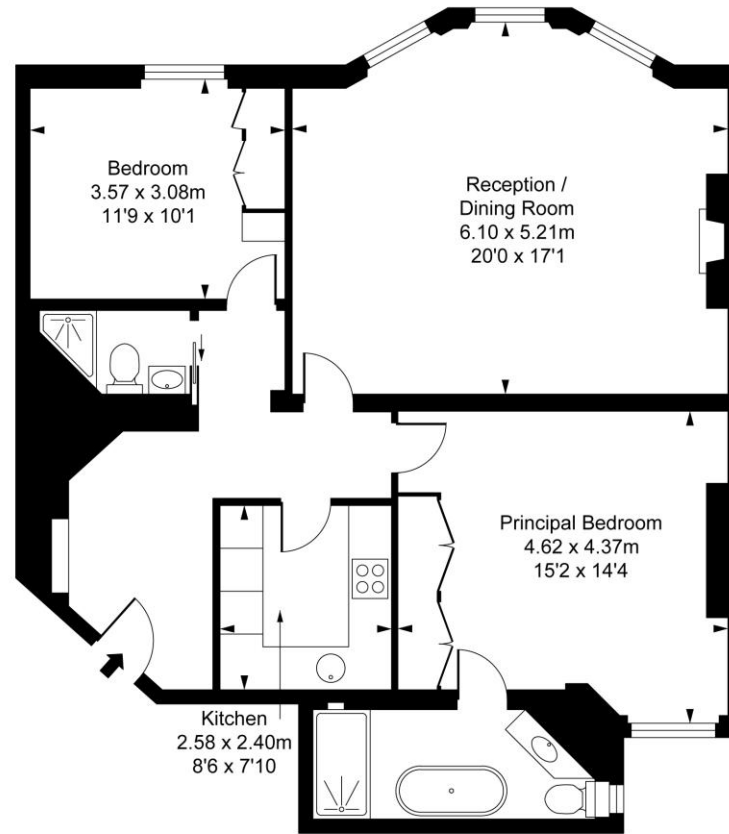
*Chestertons South Kensington Lettings*

44-48 Old Brompton Road  
 South Kensington  
 London  
 SW7 3DY

[southkensington@chestertons.co.uk](mailto:southkensington@chestertons.co.uk)  
 02075891244



Richmond Mansions,  
Old Brompton Road, SW5  
Approximate Gross Internal Area  
90.58 sq m / 975 sq ft



Raised Ground Floor

This plan is not to scale. It is for guidance and not for valuation purposes.  
All measurements and areas are approximate only, and have been prepared in accordance with the current edition of the RICS Code of Measuring Practice.  
© Fulham Performance

Chesterton Global Ltd trading as Chestertons for themselves and for the vendor of this property whose agents they are, give notice that (i) these particulars do not constitute any part of an offer or contract, (ii) all statements contained within these particulars are made without responsibility on the part of Chestertons or the vendor, (iii) whilst made in good faith, none of the statements contained within these particulars are to be relied upon as a statement or representation of fact, (iv) any intending purchasers must satisfy themselves by inspection or otherwise as to the correctness of each of the statements contained within these particulars, (v) the vendor does not make or give either Chestertons or any person in their employment any authority to make or give representation or warranty whatsoever in relation to this property. Wide angle lenses may be used. ©Copyright Chestertons | Chesterton Global Ltd | Registered Office 40 Connaught Street, Hyde Park, London W2 2AB Registered Company Number 05334580.



This paper is  
100% recyclable