



Earls Court Square
Earls Court, SW5

CHESTERTONS





An exceptionally large apartment that is set on the 4th floor with a lift, this property benefits from very spacious rooms throughout and a fantastic amount of built in storage.

Being based on the top floor, the flat is subject to a lot of natural light in the south facing reception room and second bedroom/reception with an adjoining private balcony. Original period features, as well as wood floors and high ceilings are noted throughout this home. Occupants may also have an opportunity to access Earls Court Square (subject to separate negotiations).

The property comprises of 2 double bedrooms, one of which can be converted into a second reception, an open plan fully fitted kitchen to the main reception room and a fully fitted bathroom.

Wetherby Mansions is located within moments of Earls Court tube station and local amenities. The buildings are very well kept externally and internally.

- 4th floor apartment
- Mansion block with lift
- Over 900 square feet
- Close to Earls Court tube station
- Access to garden square

£3,000 pcm

Additional tenant charges apply (fees apply to non-AST tenancies only)

Tenancy Agreement Fee: £300

References per Tenant/Guarantor: £60

Inventory check (approx. £100 – £250 inc. VAT)

chestertons.co.uk/property-to-rent/applicable-fees

Energy Efficiency Rating		Current	Potential
92-100	A		
81-91	B		
69-80	C		
55-68	D	62	68
39-54	E		
21-38	F		
1-20	G		

Not energy efficient - higher running costs

EU Directive 2002/91/EC

England, Scotland & Wales

Minimum Term: 12 months
Deposit Required: £3,461.54
Local Authority: Royal Borough of Kensington & Chelsea
Council Tax Band: F
EPC Rating: D
Furnished, Part Furnished

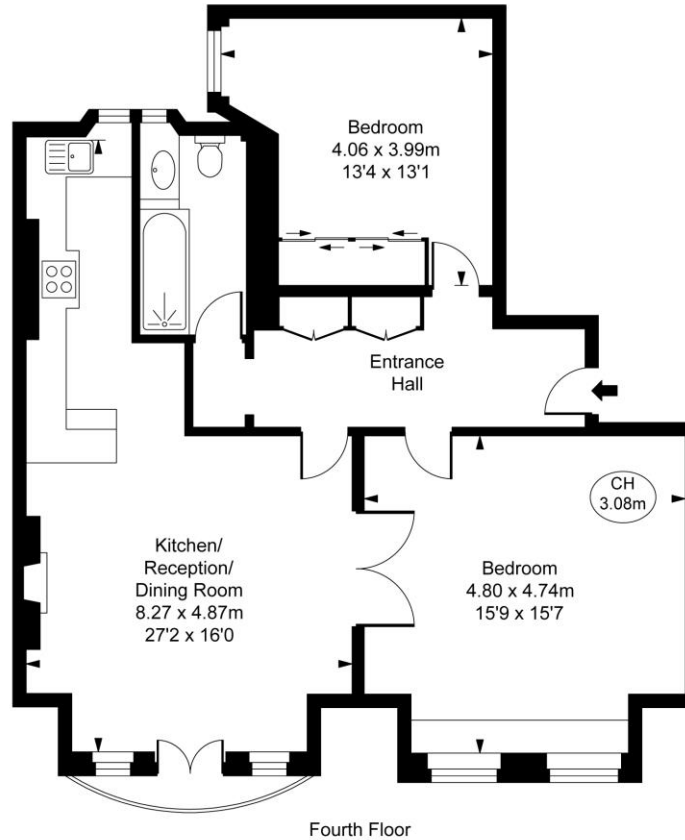
Chestertons South Kensington Lettings

44-48 Old Brompton Road
 South Kensington
 London
 SW7 3DY

southkensington@chestertons.co.uk
 02075891244

Wetherby Mansions,
Earls Court Square, SW5

Approximate Gross Internal Area
84.70 sq m / 912 sq ft
(CH = Ceiling Heights)



This plan is not to scale. It is for guidance and not for valuation purposes.
All measurements and areas are approximate only, and have been prepared in accordance with the current edition of the RICS Code of Measuring Practice.
© Fulham Performance

Chesterton Global Ltd trading as Chestertons for themselves and for the vendor of this property whose agents they are, give notice that (i) these particulars do not constitute any part of an offer or contract, (ii) all statements contained within these particulars are made without responsibility on the part of Chestertons or the vendor, (iii) whilst made in good faith, none of the statements contained within these particulars are to be relied upon as a statement or representation of fact, (iv) any intending purchasers must satisfy themselves by inspection or otherwise as to the correctness of each of the statements contained within these particulars, (v) the vendor does not make or give either Chestertons or any person in their employment any authority to make or give representation or warranty whatsoever in relation to this property. Wide angle lenses may be used. ©Copyright Chestertons | Chesterton Global Ltd | Registered Office 40 Connaught Street, Hyde Park, London W2 2AB Registered Company Number 05334580.



This paper is
100% recyclable