



Astwood Mews
South Kensington, SW7

CHESTERTONS





A stunning two bedroom maisonette arranged over the first and second floors with its own private entrance. Complete with beautiful oak wood flooring in the reception and dining area, a good quality kitchen and excellent storage.

- A stunning flat with wood flooring in the reception room
- Two bedroom, two en suite bathrooms, separate kitchen
- Own entrance and good quality fixtures and fittings throughout
- Close to Gloucester Road and South Kensington tube stations

£4,000 pcm

Additional tenant charges apply (fees apply to non-AST tenancies only)

Tenancy Agreement Fee: £300

References per Tenant/Guarantor: £60

Inventory check (approx. £100 – £250 inc. VAT)

chestertons.co.uk/property-to-rent/applicable-fees

Energy Efficiency Rating		Current	Potential
90-100	A		
81-89	B		
72-80	C		
63-71	D	56	70
54-62	E		
45-53	F		
35-44	G		
Not energy efficient - higher running costs			
England, Scotland & Wales		EU Directive 2002/91/EC	

Minimum Term: 12 months
Deposit Required: £5,538.46
Local Authority: Royal Borough of Kensington & Chelsea
Council Tax Band: G
EPC Rating: D
Unfurnished

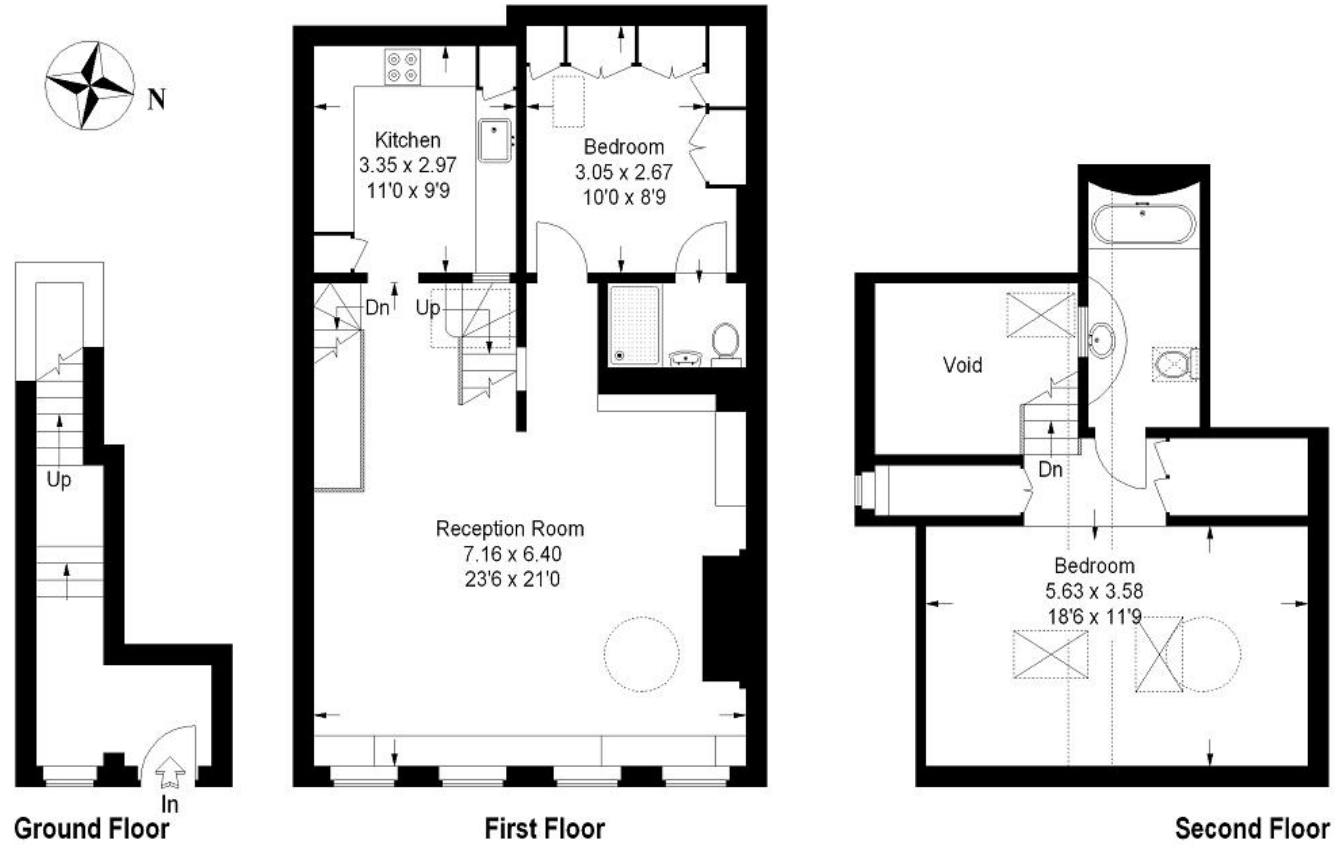
Chestertons South Kensington Lettings


44-48 Old Brompton Road
 South Kensington
 London
 SW7 3DY

southkensington@chestertons.co.uk
 02075891244

Astwood Mews

Approximate Gross Internal Area (Excluding Void) :- 112 sq m / 1205 sq ft



 = Reduced headroom below 1.5 m / 5'0

This plan is for layout guidance only. Not drawn to scale unless stated. Windows & door openings are approximate. Whilst every care is taken in the preparation of this plan, please check all dimensions, shapes & compass bearings before making any decisions reliant upon them.

Chesterton Global Ltd trading as Chestertons for themselves and for the vendor of this property whose agents they are, give notice that (i) these particulars do not constitute any part of an offer or contract, (ii) all statements contained within these particulars are made without responsibility on the part of Chestertons or the vendor, (iii) whilst made in good faith, none of the statements contained within these particulars are to be relied upon as a statement or representation of fact, (iv) any intending purchasers must satisfy themselves by inspection or otherwise as to the correctness of each of the statements contained within these particulars, (v) the vendor does not make or give either Chestertons or any person in their employment any authority to make or give representation or warranty whatsoever in relation to this property. Wide angle lenses may be used. ©Copyright Chestertons | Chesterton Global Ltd | Registered Office 40 Connaught Street, Hyde Park, London W2 2AB Registered Company Number 05334580.



This paper is 100% recyclable