



Warwick Road
Earls Court, SW5

CHESTERTONS



A lovely bright and newly refurbished studio apartment with mezzanine on the raised ground floor of this Period Conversation in Earl's Court.

The property comprises an open plan kitchen with washer dryer and induction hob, separate bathroom with underfloor heating, a mezzanine with a bedding area. Further benefiting from wooden floors throughout, very high ceilings, double glazing, it is extremely quiet.

WATER RATES INCLUDED IN THE RENT. INCLUSIVE OF CLEANER BI-WEEKLY. NO GAS CHARGES.

Ideally located in Earl's Court, it is only minutes away from the tube station and Earl's Court Road where you find all shops, restaurants, bars and coffee shops.

- Raised ground floor
- Studio apartment
- Furnished
- Student friendly
- Inclusive of water rates
- Inclusive of bi-weekly cleaner

£1,820 pcm

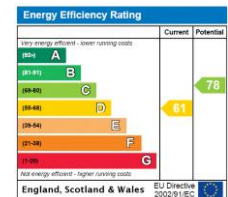
Additional tenant charges apply (fees apply to non-AST tenancies only)

Tenancy Agreement Fee: £300

References per Tenant/Guarantor: £60

Inventory check (approx. £100 – £250 inc. VAT)

chestertons.co.uk/property-to-rent/applicable-fees



Minimum Term: 12 months
Deposit Required: £2,100.00
Local Authority: Royal Borough of Kensington & Chelsea
Council Tax Band: B
EPC Rating: D
Furnished

Chestertons South Kensington Lettings

44-48 Old Brompton Road
South Kensington
London
SW7 3DY

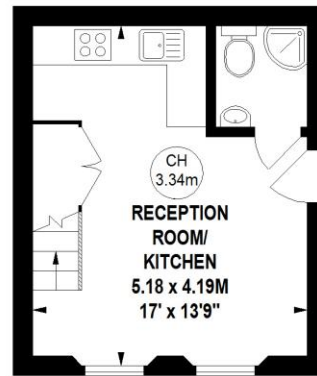
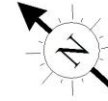
southkensington@chestertons.co.uk
02075891244

Warwick Road, SW5

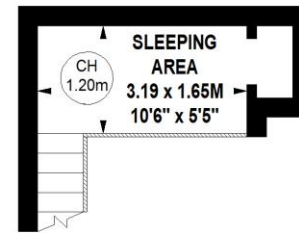
Approximate gross internal area

28.52 sq m / 307 sq ft

Key :
CH - Ceiling Height



Raised Ground Floor



Mezzanine

The floor plan is not to scale and measurements and areas shown are approximate and therefore should be used for illustrative purposes only. The plan has been prepared in accordance with the RICS code of Measuring Practice and whilst we have confidence in the information produced, it must not be relied on. If there is any aspect of particular importance, you should carry out or commission your own inspection of the property.
Copyright of FeaturePRO.

