



Philbeach Gardens
Earls Court, SW5

CHESTERTONS





(SHORT LET) A stylish 2 bedroom Period conversion apartment on the 1st floor in the highly desirable location of Philbeach Gardens with access to the garden square and tennis courts.

*** INCLUSIVE OF ALL BILLS AND WIFI ***

(NIGHTLY RATE OF £196.15) The property boasts 2 bedrooms with fitted wardrobes, 2 bathrooms (1 en-suite) and private balcony. The property further boasts an airy open plan kitchen reception with integrated appliances, wood floors throughout, high ceilings, period detailing and ample storage.

Philbeach Gardens is a lovely residential street, ideally positioned for Earls Court tube station and amenities as well as a short distance to Kensington High Street and South Kensington.

- 1st floor Period conversion apartment
- 2 beds & 2 baths
- Private balcony
- Access to communal gardens with tennis courts

£5,950 pcm

Additional tenant charges apply (fees apply to non-AST tenancies only)

Tenancy Agreement Fee: £300

References per Tenant/Guarantor: £60

Inventory check (approx. £100 – £250 inc. VAT)

chestertons.co.uk/property-to-rent/applicable-fees

Energy Efficiency Rating		Current	Potential
100-109	A		
81-100	B		
62-81	C	73	79
43-62	D		
25-43	E		
10-25	F		
1-10	G		

Not energy efficient - higher running costs

EU Directive 2002/91/EC
England, Scotland & Wales

Minimum Term: 1 months
Deposit Required: £2,746.15
Local Authority: Royal Borough of Kensington & Chelsea
Council Tax Band: E
EPC Rating: C
Furnished

Chestertons South Kensington Lettings

44-48 Old Brompton Road
 South Kensington
 London
 SW7 3DY

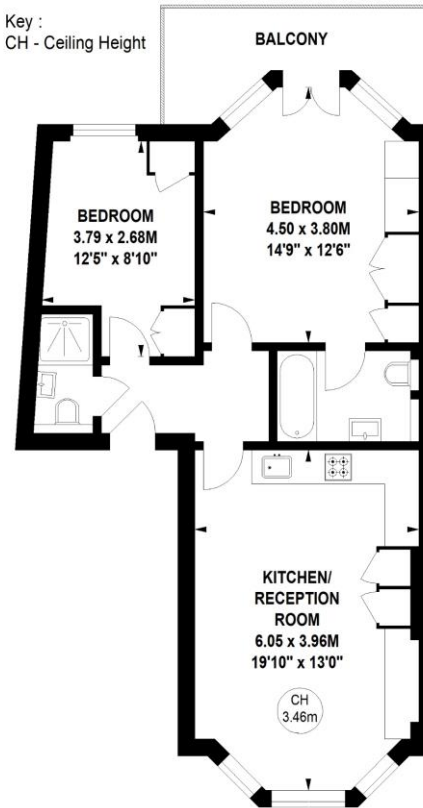
southkensington@chestertons.co.uk
 02075891244

Philbeach Gardens, SW5

Approximate gross internal area

59.83 sq m / 644 sq ft

Key :
CH - Ceiling Height



First Floor

Not to scale, for guidance only and must not be relied upon as a statement of fact.
All measurements and areas are approximate only

Chesterton Global Ltd trading as Chestertons for themselves and for the vendor of this property whose agents they are, give notice that (i) these particulars do not constitute any part of an offer or contract, (ii) all statements contained within these particulars are made without responsibility on the part of Chestertons or the vendor, (iii) whilst made in good faith, none of the statements contained within these particulars are to be relied upon as a statement or representation of fact, (iv) any intending purchasers must satisfy themselves by inspection or otherwise as to the correctness of each of the statements contained within these particulars, (v) the vendor does not make or give either Chestertons or any person in their employment any authority to make or give representation or warranty whatsoever in relation to this property. Wide angle lenses may be used. ©Copyright Chestertons | Chesterton Global Ltd | Registered Office 40 Connaught Street, Hyde Park, London W2 2AB Registered Company Number 05334580.



This paper is
100% recyclable