



Stanhope Gardens
South Kensington, SW7

CHESTERTONS





A stunning one bedroom flat on the raised ground floor of a period conversion in the heart of South Kensington. With wood floors throughout, high ceilings, double reception room and contemporary kitchen and bathroom.

- Large double reception room
- Modern kitchen
- Bedroom with en-suite bathroom
- hard wood flooring throughout with extremely high ceilings

£3,500 pcm

Additional tenant charges apply (fees apply to non-AST tenancies only)

Tenancy Agreement Fee: £300

References per Tenant/Guarantor: £60

Inventory check (approx. £100 – £250 inc. VAT)

chestertons.co.uk/property-to-rent/applicable-fees

| Energy Efficiency Rating | | Current | Potential |
|--------------------------|---|---------|-----------|
| 90-100 | A | | |
| 81-89 | B | | |
| 72-80 | C | | 78 |
| 63-71 | D | 56 | |
| 54-62 | E | | |
| 45-53 | F | | |
| 35-44 | G | | |

Not energy efficient - higher running costs

England, Scotland & Wales EU Directive 2002/91/EC

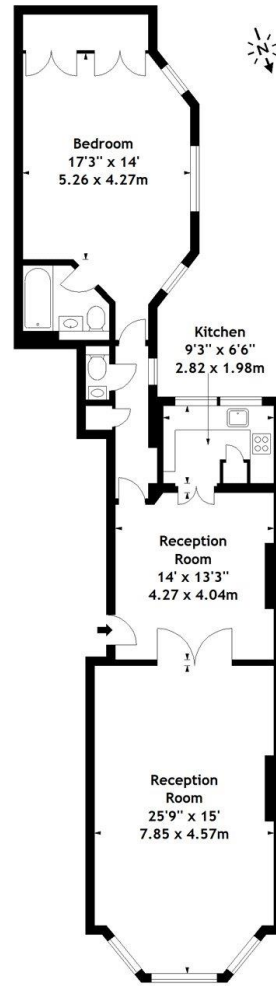
Minimum Term: 12 months
Deposit Required: £4,038.46
Local Authority: Royal Borough of Kensington & Chelsea
Council Tax Band: G
EPC Rating: D
Unfurnished

Chestertons South Kensington Lettings

44-48 Old Brompton Road
 South Kensington
 London
 SW7 3DY

southkensington@chestertons.co.uk
 02075891244

Stanhope Gardens, SW7
Approx. Gross Internal Area
1029 Sq Ft - 95.59 Sq M



Ground Floor

Measured in accordance with RICS guidelines. Every attempt is made to ensure accuracy, however all measurements are approximate. This floor plan is for illustrative purposes only and is not to scale.
© Datagraphy Ltd 2015
Photographs * Floorplans * Virtual Tours
Tel: 0845 643 6401 www.datagraphy.com

Chesterton Global Ltd trading as Chestertons for themselves and for the vendor of this property whose agents they are, give notice that (i) these particulars do not constitute any part of an offer or contract, (ii) all statements contained within these particulars are made without responsibility on the part of Chestertons or the vendor, (iii) whilst made in good faith, none of the statements contained within these particulars are to be relied upon as a statement or representation of fact, (iv) any intending purchasers must satisfy themselves by inspection or otherwise as to the correctness of each of the statements contained within these particulars, (v) the vendor does not make or give either Chestertons or any person in their employment any authority to make or give representation or warranty whatsoever in relation to this property. Wide angle lenses may be used. ©Copyright Chestertons | Chesterton Global Ltd | Registered Office 40 Connaught Street, Hyde Park, London W2 2AB Registered Company Number 05334580.



This paper is
100% recyclable