



Queens Gate Place Mews
South Kensington, SW7

CHESTERTONS





A recently refurbished maisonette located in a charming mews moments away from South Kensington Tube station. Benefits from three double bedrooms with three en-suite bathrooms, separate kitchen and private roof terrace.

- Recently refurbished with contemporary fixtures and fittings throughout
- Spacious reception room with separate kitchen, 3 bedrooms, 3 bathrooms, separate utility room
- Three en-suite bedrooms and a private roof terrace
- Moments from Gloucester Road tube station and the local amenities

£8,450 pcm

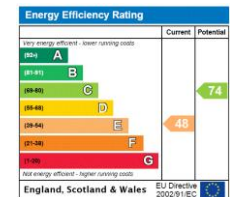
Additional tenant charges apply (fees apply to non-AST tenancies only)

Tenancy Agreement Fee: £300

References per Tenant/Guarantor: £60

Inventory check (approx. £100 – £250 inc. VAT)

chestertons.co.uk/property-to-rent/applicable-fees



Minimum Term: 12 months
Deposit Required: £11,700.00
Local Authority: Royal Borough Of Kensington & Chelsea
Council Tax Band: G
EPC Rating: E
Furnished, Part Furnished

Chestertons South Kensington Lettings

44-48 Old Brompton Road


South Kensington

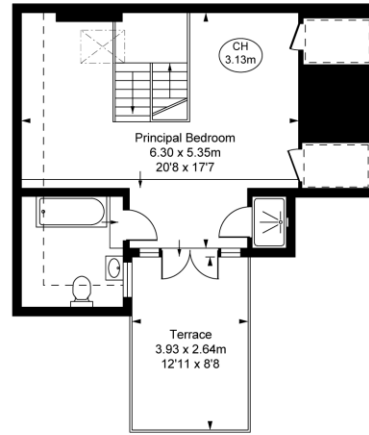
London

SW7 3DY

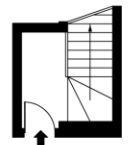
southkensington@chestertons.co.uk

02075891244

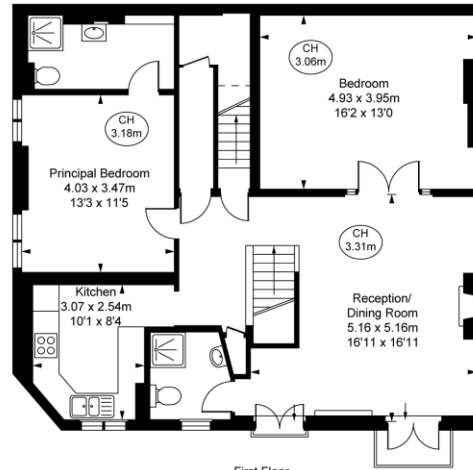
Queens Gate Place Mews,
 South Kensington, SW7
 Approximate Gross Internal Area
 137.87 sq m / 1,484 sq ft
 (Including restricted height
 under 1.5m )
 (CH = Ceiling Heights)



Second Floor
 Approximate Gross Internal Area
 39.86 sq m / 429 sq ft



Ground Floor Entrance
 Approximate Gross Internal Area
 4.76 sq m / 51 sq ft



First Floor
 Approximate Gross Internal Area
 93.25 sq m / 1,004 sq ft

This plan is not to scale. It is for guidance and not for valuation purposes.
 All measurements and areas are approximate only, and have been prepared in accordance with the current edition of theRICS Code of Measuring Practice.
 © Fulham Performance

Chesterton Global Ltd trading as Chestertons for themselves and for the vendor of this property whose agents they are, give notice that (i) these particulars do not constitute any part of an offer or contract, (ii) all statements contained within these particulars are made without responsibility on the part of Chestertons or the vendor, (iii) whilst made in good faith, none of the statements contained within these particulars are to be relied upon as a statement or representation of fact, (iv) any intending purchasers must satisfy themselves by inspection or otherwise as to the correctness of each of the statements contained within these particulars, (v) the vendor does not make or give either Chestertons or any person in their employment any authority to make or give representation or warranty whatsoever in relation to this property. Wide angle lenses may be used. ©Copyright Chestertons | Chesterton Global Ltd | Registered Office 40 Connaught Street, Hyde Park, London W2 2AB Registered Company Number 05334580.



This paper is
 100% recyclable