



Harrington Gardens
South Kensington, SW7

CHESTERTONS





A charming three bedroom apartment set over two floors of this impressive building with private direct access and views of Harrington Gardens.

On the ground floor of this stunning property you are greeted with an impressive reception room with views over the communal gardens which allows a lot of natural light to flood into the reception room. You also have a large eat-in kitchen and primary bedroom with en-suite.

On the lower ground floor you have two extra bedrooms with direct access onto the communal gardens, two bathrooms and an abundance of storage.

Harrington Gardens is situated in the heart of South Kensington moments from South Kensington and Gloucester Road tube stations.

- Impressive three bedroom property
- High ceiling and wooden floors
- Direct access to Harrington Gardens
- Close proximity to Gloucester Road tube station

£8,000 pcm

Additional tenant charges apply (fees apply to non-AST tenancies only)

Tenancy Agreement Fee: £300

References per Tenant/Guarantor: £60

Inventory check (approx. £100 – £250 inc. VAT)

chestertons.co.uk/property-to-rent/applicable-fees

Energy Efficiency Rating		Current	Potential
95-100	A		
81-94	B		
69-80	C		72
55-68	D		
39-54	E	48	
21-38	F		
1-20	G		

Not energy efficient - higher running costs

England, Scotland & Wales EU Directive 2002/91/EC

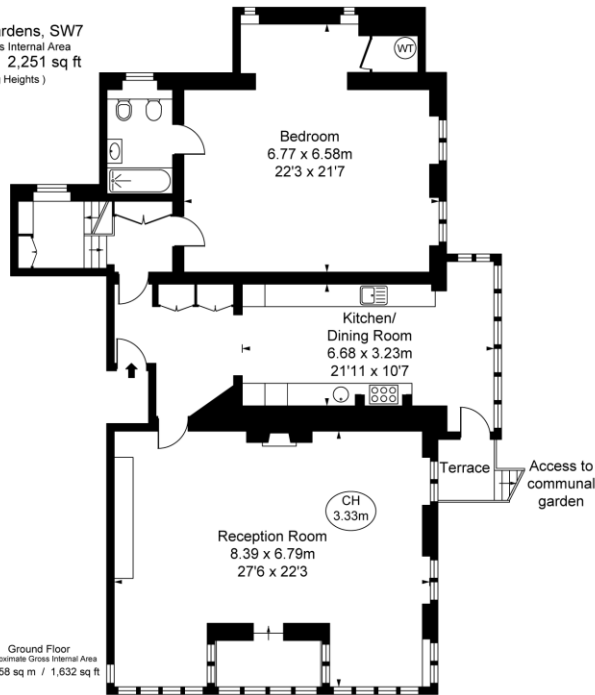
Minimum Term: 12 months
Deposit Required: £11,076.92
Local Authority: Royal Borough of Kensington & Chelsea
Council Tax Band: H
EPC Rating: E

Chestertons South Kensington Lettings

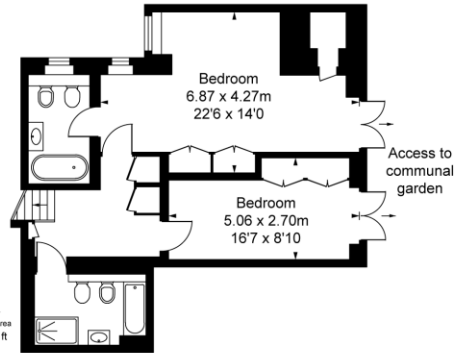
44-48 Old Brompton Road
 South Kensington
 London
 SW7 3DY

southkensington@chestertons.co.uk
 02075891244

Harrington Gardens, SW7
 Approximate Gross Internal Area
 209.13 sq m / 2,251 sq ft
 (CH = Ceiling Heights)



Ground Floor
 Approximate Gross Internal Area
 151.58 sq m / 1,632 sq ft



Lower Ground Floor
 Approximate Gross Internal Area
 57.55 sq m / 619 sq ft

This plan is not to scale. It is for guidance and not for valuation purposes.
 All measurements and areas are approximate only, and have been prepared in accordance with the current edition of the RICS Code of Measuring Practice.
 © Fulham Performance

Chesteron Global Ltd trading as Chestertons for themselves and for the vendor of this property whose agents they are, give notice that (i) these particulars do not constitute any part of an offer or contract, (ii) all statements contained within these particulars are made without responsibility on the part of Chestertons or the vendor, (iii) whilst made in good faith, none of the statements contained within these particulars are to be relied upon as a statement or representation of fact, (iv) any intending purchasers must satisfy themselves by inspection or otherwise as to the correctness of each of the statements contained within these particulars, (v) the vendor does not make or give either Chestertons or any person in their employment any authority to make or give representation or warranty whatsoever in relation to this property. Wide angle lenses may be used. ©Copyright Chestertons | Chesteron Global Ltd | Registered Office 40 Connaught Street, Hyde Park, London W2 2AB Registered Company Number 05334580.



This paper is
 100% recyclable