



Gloucester Road
South Kensington, SW7

CHESTERTONS





A beautiful four bedroom lateral apartment of great proportions on the 2nd floor of this prestigious mansion block with lift and porter. The property benefits from high ceilings, a balcony and views over the communal garden at the rear.

- 4 Bedrooms
- Reception Room & Dining Room
- 2 Bathrooms
- Close to amenities of Gloucester Road

£14,300 pcm

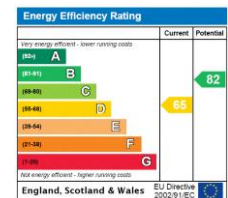
Additional tenant charges apply (fees apply to non-AST tenancies only)

Tenancy Agreement Fee: £300

References per Tenant/Guarantor: £60

Inventory check (approx. £100 – £250 inc. VAT)

chestertons.co.uk/property-to-rent/applicable-fees



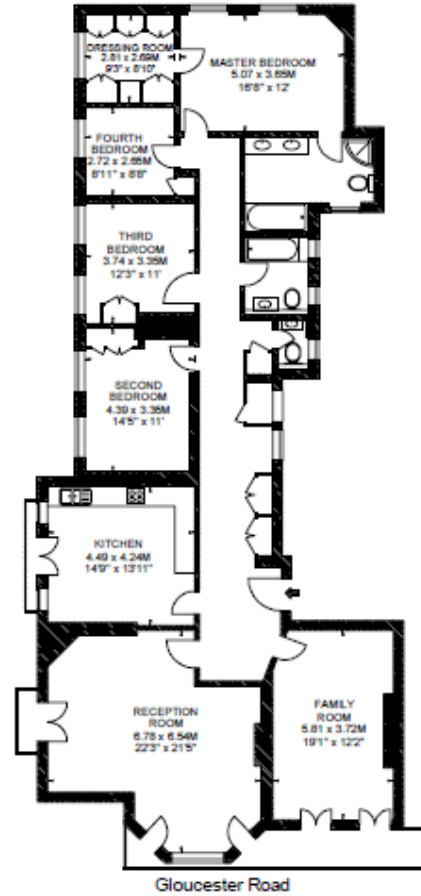
Minimum Term: 12 months
Deposit Required: £19,800.00
Local Authority: Royal Borough of Kensington & Chelsea
Council Tax Band:
EPC Rating: D
Furnished, Part Furnished, Unfurnished

Chestertons South Kensington Lettings

44-48 Old Brompton Road
 South Kensington
 London
 SW7 3DY

southkensington@chestertons.co.uk
 02075891244

Flat 4
Second Floor
St. George's Court,
Gloucester Road, SW7
Approximate gross internal area
197 sq m / 2121 sq ft



Scale floor plans produced by Mays Floorplans ©. Tel 020 3397 4594
All measurements are maximum, and include wardrobes and window bays where applicable

Chesterton Global Ltd trading as Chestertons for themselves and for the vendor of this property whose agents they are, give notice that (i) these particulars do not constitute any part of an offer or contract, (ii) all statements contained within these particulars are made without responsibility on the part of Chestertons or the vendor, (iii) whilst made in good faith, none of the statements contained within these particulars are to be relied upon as a statement or representation of fact, (iv) any intending purchasers must satisfy themselves by inspection or otherwise as to the correctness of each of the statements contained within these particulars, (v) the vendor does not make or give either Chestertons or any person in their employment any authority to make or give representation or warranty whatsoever in relation to this property. Wide angle lenses may be used. ©Copyright Chestertons | Chesterton Global Ltd | Registered Office 40 Connaught Street, Hyde Park, London W2 2AB Registered Company Number 05334580.



This paper is
100% recyclable