



Penywern Road
Earls Court, SW5

CHESTERTONS





This modern and beautifully appointed two bedroom, two bathroom apartment is set on the first floor (with lift) of this well maintained Period building.

The property comprises of two double bedrooms, two bathrooms (one en-suite), a light and bright reception room and a fully fitted semi-separate kitchen. Attention to detail has been noted throughout this flat incorporating high quality fixtures and fittings, wood flooring and its own private balcony. The kitchen consists of a washing machine, full-sized fridge freezer, dishwasher, electric hob and electric oven. The apartment further benefits from high ceilings and double glazing to the rear.

Earls Court and West Brompton tube stations, as well as their local amenities, are moments from this building.

- A modern apartment with a contemporary finish and wood flooring.
- Two bedrooms, two bathrooms, high ceilings, semi-open plan fully fitted kitchen.
- Good storage throughout with loft access, built in wardrobes and private balcony.
- Close to Earls Court tube station and its local amenities.

£690 per week (£2,990 pcm)

Additional tenant charges apply (fees apply to non-AST tenancies only)

Tenancy Agreement Fee: £300

References per Tenant/Guarantor: £60

Inventory check (approx. £100 – £250 inc. VAT)

chestertons.co.uk/property-to-rent/applicable-fees

Energy Efficiency Rating		
Energy efficiency class (lower running costs)	Current	Potential
92-100 A		
81-91 B		
69-80 C		
55-68 D		76
49-54 E		
41-48 F		
31-39 G		
Not energy efficient - higher running costs		
EU Directive 2002/91/EC		
England, Scotland & Wales		

Minimum Term: 6 months
Deposit Required: £3,300.00
Local Authority: Royal Borough of Kensington & Chelsea
Council Tax Band: E
EPC Rating: D
Furnished

Chestertons South Kensington Lettings

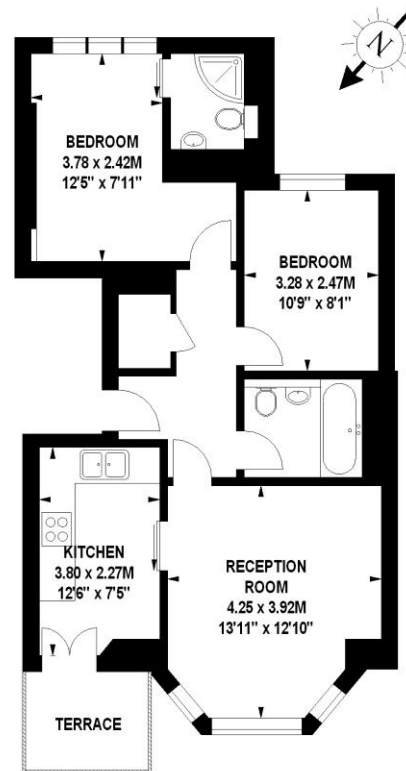
44-48 Old Brompton Road
 South Kensington
 London
 SW7 3DY

lettings.southkensington@chestertons.co.uk
 02075891244

Penywern Road, SW5

Approximate gross internal area

61.04 sq m / 657 sq ft



First Floor

The floor plan is not to scale and measurements and areas shown are approximate and therefore should be used for illustrative purposes only.

The plan been prepared in accordance with the RICS code of Measuring Practice and whilst we have confidence in the information produced, it must be not be relied on.

If there is any aspect of particular importance, you should carry out or commission your own inspection of the property.

Copyright of FeaturePRO.

Chesterton Global Ltd trading as Chestertons for themselves and for the vendor of this property whose agents they are, give notice that (i) these particulars do not constitute any part of an offer or contract, (ii) all statements contained within these particulars are made without responsibility on the part of Chestertons or the vendor, (iii) whilst made in good faith, none of the statements contained within these particulars are to be relied upon as a statement or representation of fact, (iv) any intending purchasers must satisfy themselves by inspection or otherwise as to the correctness of each of the statements contained within these particulars, (v) the vendor does not make or give either Chestertons or any person in their employment any authority to make or give representation or warranty whatsoever in relation to this property. Wide angle lenses may be used. ©Copyright Chestertons | Chesterton Global Ltd | Registered Office 40 Connaught Street, Hyde Park, London W2 2AB Registered Company Number 05334580.



This paper is
100% recyclable