



Nevern Square  
Earls Court, SW5

CHESTERTONS









**\*VIDEO AVAILABLE\*** An exceptionally large and stunning apartment located on the in this well maintained portered building. The property has been finished to exacting standards, with contemporary bathrooms and kitchen fittings, as well as wood floors, high ceilings and ample storage.

The flat comprises of two large double bedrooms, two bathrooms, fully fitted open plan kitchen to a welcoming reception room.

Nevern Mansions is located within a beautifully maintained garden square whereby residents can apply for a key (Subject to separate negotiation). Earls Court tube station and local amenities are a close walk from this building.

- A contemporary and spacious two bedroom two bedroom mansion block apartment.
- Period features, large windows, high ceilings, wood flooring throughout.
- Portered building with access to communal gardens.
- Ideally located for Earls Court & South Kensington amenities.

**Furnished, Part Furnished**

**£690 per week (£2,990 pcm)**

Additional tenant charges apply (fees apply to non-AST tenancies only)

Tenancy Agreement Fee: £300

References per Tenant/Guarantor: £60

Inventory check (approx. £100 – £250 inc. VAT)

[chestertons.com/property-to-rent/applicable-fees](https://www.chestertons.com/property-to-rent/applicable-fees)

Energy Efficiency Rating		Current	Potential
90-100	A		
81-89	B		
72-80	C	77	78
63-71	D		
54-62	E		
45-53	F		
35-44	G		

Not energy efficient - higher running costs

EU Directive 2002/91/EC

**Chestertons South Kensington Lettings**

44-48 Old Brompton Road

South Kensington

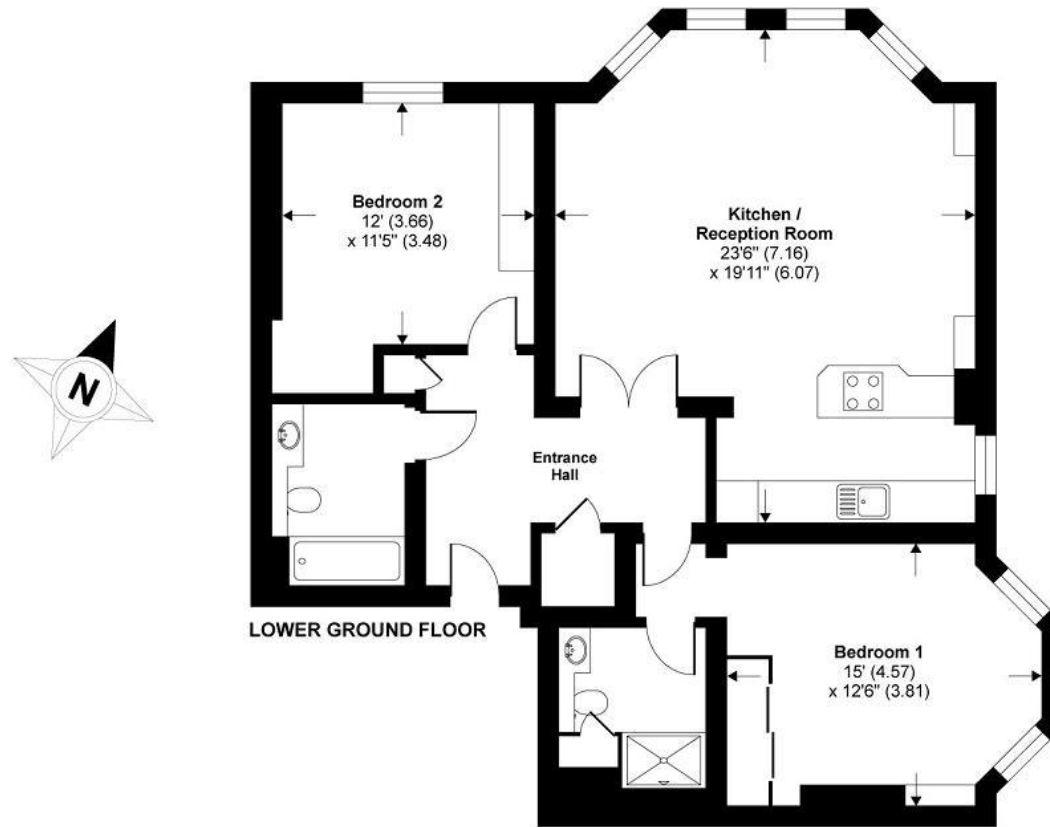
London

SW7 3DY

[lettings.southkensington@chestertons.com](mailto:lettings.southkensington@chestertons.com)

02075891244

# Nevern Mansions, Nevern Square, London, SW5



**TOTAL GROSS INTERNAL FLOOR AREA 1046 SQ FT 97.1 SQ METRES**

Whilst every attempt has been made to ensure the accuracy of the floor plan contained here, measurements of doors, windows and rooms are approximate and no responsibility is taken for any error, omission or misstatement. These plans are for representation purposes only as defined by RICS Code of Measuring Practice and should be used as such by any prospective purchaser. Specifically no guarantee is given on the total square footage of the property if quoted on this plan. Any figure given is for initial guidance only and should not be relied on as a basis of valuation.

Copyright nichecom.co.uk 2013 Produced for Chesterton Humberts REF : 485587

Chesterton Global Ltd trading as Chestertons for themselves and for the vendor of this property whose agents they are, give notice that (i) these particulars do not constitute any part of an offer or contract, (ii) all statements contained within these particulars are made without responsibility on the part of Chestertons or the vendor, (iii) whilst made in good faith, none of the statements contained within these particulars are to be relied upon as a statement or representation of fact, (iv) any intending purchasers must satisfy themselves by inspection or otherwise as to the correctness of each of the statements contained within these particulars, (v) the vendor does not make or give either Chestertons or any person in their employment any authority to make or give representation or warranty whatsoever in relation to this property. Wide angle lenses may be used. ©Copyright Chestertons | Chesterton Global Ltd | Registered Office 40 Connaught Street, Hyde Park, London W2 2AB Registered Company Number 05334580.



This paper is  
100% recyclable