



Coleherne Road
Earls Court, SW10

CHESTERTONS





This attractive two-bedroom apartment is positioned on the first floor of a charming period building situated in Earl's Court.

Boasting a generously sized living room with expansive windows that flood the space with natural light, this flat offers a welcoming ambiance. The well-equipped kitchen features abundant storage and contemporary appliances. The primary bedroom offers ample space and convenient built-in storage, while an additional bedroom also comes with built-in storage, complemented by a separate family bathroom and a guest WC.

Its prime location ensures easy access to the various amenities and transport options available in Earl's Court.

- 1st floor apartment
- Spacious living room
- Separate modern kitchen
- 2 bedrooms with built in storage
- Bathroom & guest WC
- Over 900 square feet

£795 per week (£3,445 pcm)

Additional tenant charges apply (fees apply to non-AST tenancies only)

Tenancy Agreement Fee: £300

References per Tenant/Guarantor: £60

Inventory check (approx. £100 – £250 inc. VAT)

chestertons.co.uk/property-to-rent/applicable-fees

Energy Efficiency Rating		
Most energy efficient - lower running costs	Current	Potential
92-100 A		
81-91 B		
69-80 C		
55-68 D		
49-54 E		
41-48 F		
31-40 G		
Not energy efficient - higher running costs		
England, Scotland & Wales	EU Directive 2002/91/EC	

Minimum Term: 12 months
Deposit Required: £3,975.00
Local Authority: Royal Borough of Kensington & Chelsea
Council Tax Band: C
EPC Rating: C
Part Furnished

Chestertons South Kensington Lettings

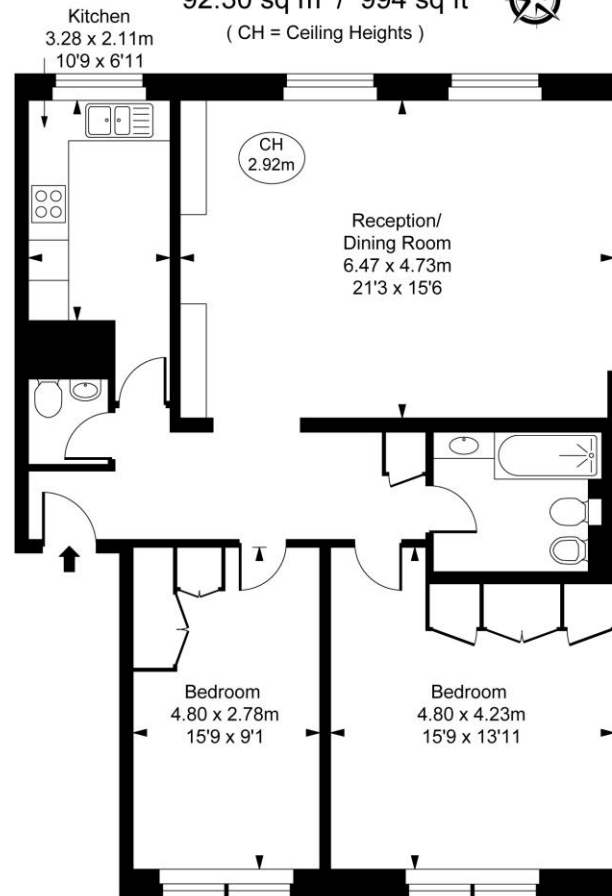
44-48 Old Brompton Road
 South Kensington
 London
 SW7 3DY

southkensington@chestertons.co.uk
 02075891244

Howard Court,
Coleherne Road, SW10

Approximate Gross Internal Area
92.30 sq m / 994 sq ft

(CH = Ceiling Heights)



First Floor

This plan is not to scale. It is for guidance and not for valuation purposes.
All measurements and areas are approximate only, and have been prepared in accordance with the current edition of the RICS Code of Measuring Practice.
© Fulham Performance

Chesterton Global Ltd trading as Chestertons for themselves and for the vendor of this property whose agents they are, give notice that (i) these particulars do not constitute any part of an offer or contract, (ii) all statements contained within these particulars are made without responsibility on the part of Chestertons or the vendor, (iii) whilst made in good faith, none of the statements contained within these particulars are to be relied upon as a statement or representation of fact, (iv) any intending purchasers must satisfy themselves by inspection or otherwise as to the correctness of each of the statements contained within these particulars, (v) the vendor does not make or give either Chestertons or any person in their employment any authority to make or give representation or warranty whatsoever in relation to this property. Wide angle lenses may be used. ©Copyright Chestertons | Chesterton Global Ltd | Registered Office 40 Connaught Street, Hyde Park, London W2 2AB Registered Company Number 05334580.



This paper is
100% recyclable