



Courtfield Gardens
South Kensington, SW5

CHESTERTONS





A stunning first floor two bedroom, two bathroom Period conversion apartment with lift. The property has been finished to an exceptionally high standard with beautiful Period detailing and quality fixtures and fittings. This located on the north side of Courtfield Gardens with South and East facing viewings.

The spacious reception room has great ceiling heights, extremely bright as south facing, beautiful period detailing and ornamental fire place. The reception room leads onto the dining area with south facing decked terrace and a semi separate integrated kitchen with all modern appliances. The principle bedrooms has south and east facing windows with Juliette balconies, en-suite bathroom and fitted wardrobes. The second bedroom is as beautiful as the principle bedroom and also has great ceiling heights, fitted wardrobes and additional shared/guest bathroom. Both bathrooms are fully tiled and included fitted storage.

Additional features also include parquet wood flooring throughout, Victorian style windows which are double glazed, lots of integrated storage, mood lighting throughout. Residents of Courtfield Gardens can apply for key for the garden square via the garden committee.

Courtfield Gardens is conveniently positioned for the shops, boutiques and restaurants of South Kensington

- 1st floor Period conversion apartment with lift.
- 2x Juliette balconies, private decked terrace & communal garden access STA.
- 2 bedrooms, 2 bathrooms, semi open plan kitchen reception & dining.
- Over 1,000 square feet, high ceilings, parquet wood floors, double glazed windows.
- Super bright with south & east facing views.
- With a short walk of Gloucester Road tube station & amenities of South Kensington.

£1,260 per week (£5,460 pcm)

Additional tenant charges apply (fees apply to non-AST tenancies only)

Tenancy Agreement Fee: £300

References per Tenant/Guarantor: £60

Inventory check (approx. £100 – £250 inc. VAT)

[chestertons.co.uk/property-to-rent/applicable-fees](https://www.chestertons.co.uk/property-to-rent/applicable-fees)

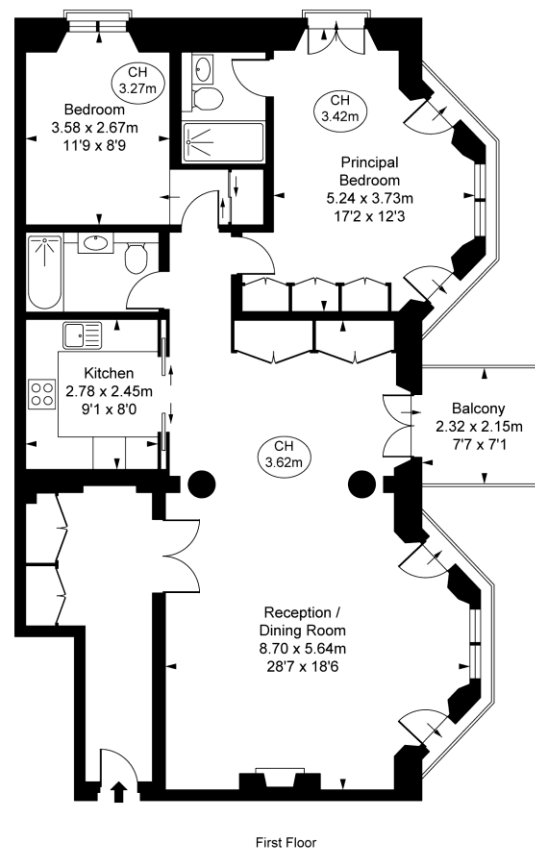
Minimum Term: 6 months
Deposit Required: £7,560.00
Local Authority: Royal Borough of Kensington & Chelsea
Council Tax Band: G
EPC Rating: C
Part Furnished, Unfurnished

Chestertons South Kensington Lettings

44-48 Old Brompton Road
 South Kensington
 London
 SW7 3DY

southkensington@chestertons.co.uk
 02075891244

Courtfield Gardens,
South Kensington, SW5
Approximate Gross Internal Area
100.26 sq m / 1,079 sq ft
(CH = Ceiling Heights)



This plan is not to scale. It is for guidance and not for valuation purposes.
All measurements and areas are approximate only, and have been prepared in accordance with the current edition of the RICS Code of Measuring Practice.
© Fulham Performance

Chesterton Global Ltd trading as Chestertons for themselves and for the vendor of this property whose agents they are, give notice that (i) these particulars do not constitute any part of an offer or contract, (ii) all statements contained within these particulars are made without responsibility on the part of Chestertons or the vendor, (iii) whilst made in good faith, none of the statements contained within these particulars are to be relied upon as a statement or representation of fact, (iv) any intending purchasers must satisfy themselves by inspection or otherwise as to the correctness of each of the statements contained within these particulars, (v) the vendor does not make or give either Chestertons or any person in their employment any authority to make or give representation or warranty whatsoever in relation to this property. Wide angle lenses may be used. ©Copyright Chestertons | Chesterton Global Ltd | Registered Office 40 Connaught Street, Hyde Park, London W2 2AB Registered Company Number 05334580.

