



Moscow Mansions
224 Cromwell Road, SW5





A bright and airy Penthouse apartment on the 5th floor with lift within this well maintained mansion block.

The apartment boast a spacious reception room with ornamental fire place, south facing terrace, separate kitchen with integrated appliances, 3 bedrooms and 2 bathrooms (1 en-suite). This lateral apartment is approx. 1,300 square feet and is 1 of 2 penthouses in the building. The building further benefits a day porter.

Moscow Mansions is located within a short walk of Earls Court tube station and all amenities of Earls Court, Kensington and South Kensington.

- 3bedrooms & 2 bathrooms
- 5th floor Penthouse
- Mansion block with lift
- Air cooling system
- South facing terrace
- Approx. 1,300 square feet

£5,993 pcm

Additional tenant charges apply (fees apply to non-AST tenancies only)

Tenancy Agreement Fee: £300

References per Tenant/Guarantor: £60

Inventory check (approx. £100 – £250 inc. VAT)

chestertons.co.uk/property-to-rent/applicable-fees

Energy Efficiency Rating		Current	Potential
100-120	A		
81-101	B		
62-80	C	75	76
43-61	D		
25-42	E		
10-24	F		
1-9	G		

Not energy efficient - higher running costs

EU Directive 2002/91/EC

England, Scotland & Wales

Minimum Term: 12 months
Deposit Required: £8,298.00
Local Authority: Royal Borough of Kensington & Chelsea
Council Tax Band: G
EPC Rating: C
Unfurnished

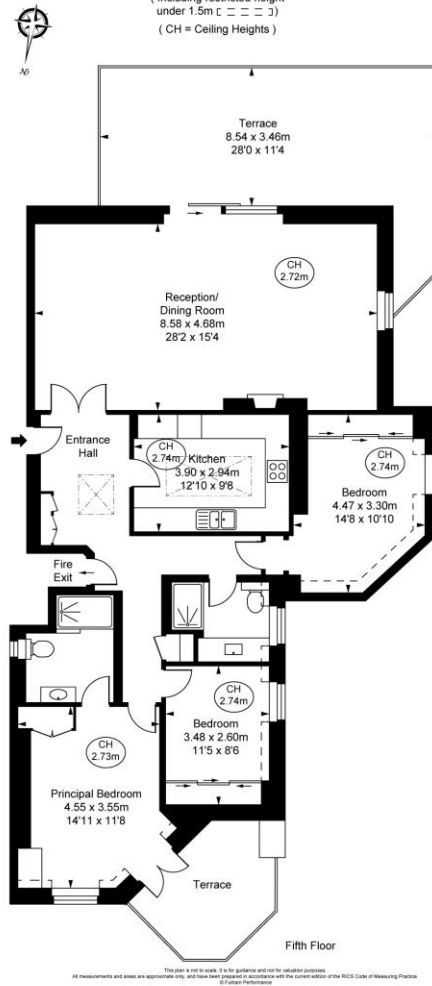
Chestertons South Kensington Lettings

44-48 Old Brompton Road
 South Kensington
 London
 SW7 3DY

southkensington@chestertons.co.uk
 02075891244

Moscow Mansions,
Cromwell Road, SW5
Approximate Gross Internal Area
121.86 sq m / 1,312 sq ft

(Including restricted height
under 1.5m □ □ □ □)
(CH = Ceiling Heights)



Chesterton Global Ltd trading as Chestertons for themselves and for the vendor of this property whose agents they are, give notice that (i) these particulars do not constitute any part of an offer or contract, (ii) all statements contained within these particulars are made without responsibility on the part of Chestertons or the vendor, (iii) whilst made in good faith, none of the statements contained within these particulars are to be relied upon as a statement or representation of fact, (iv) any intending purchasers must satisfy themselves by inspection or otherwise as to the correctness of each of the statements contained within these particulars, (v) the vendor does not make or give either Chestertons or any person in their employment any authority to make or give representation or warranty whatsoever in relation to this property. Wide angle lenses may be used. ©Copyright Chestertons | Chesterton Global Ltd | Registered Office 40 Connaught Street, Hyde Park, London W2 2AB Registered Company Number 05334580.

