



# Harrington Court

13-15 Harrington Road, SW7

£1,600 per week

(£6,933.33 pcm)

This Executive Two Bedroom Apartment offers contemporary luxury living perfect for an extended stay in London allowing guests to relax, unwind or entertain in the privacy of their own apartment.

**CHESTERTONS**

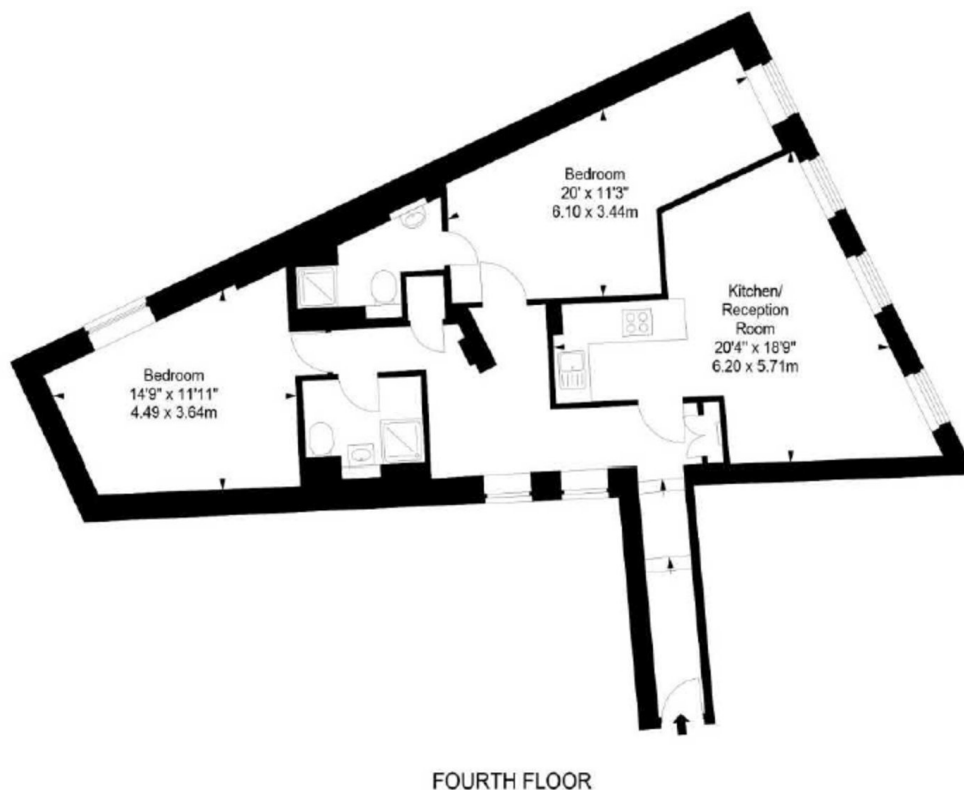
**FLAT 4J  
CHEVAL HARRINGTON COURT  
13 HARRINGTON ROAD  
LONDON SW7 3ES**



**APPROX. GROSS INTERNAL AREA\***  
865 Ft<sup>2</sup> - 80.36 M<sup>2</sup>

Illustration For Identification Only, Not to Scale  
All Calculations include Any/All Areas Under 1.5m Head Height.

\* As Defined by RICS - Code of Measuring Practice



**Tenure:** Long Let

**Furnished, Part Furnished**

Additional tenant charges apply (fees apply to non-AST tenancies only)

Tenancy Agreement Fee: £300

References per Tenant/Guarantor: £60

Inventory check (approx. £100 – £250 inc. VAT)

[chestertons.com/property-to-rent/applicable-fees](https://www.chestertons.com/property-to-rent/applicable-fees)

### ***Chestertons South Kensington Lettings***

44-48 Old Brompton Road

South Kensington

London

SW7 3DY

[lettings.southkensington@chestertons.com](mailto:lettings.southkensington@chestertons.com)

02075891244

[chestertons.com](https://www.chestertons.com)

Chesterton Global Ltd trading as Chestertons for themselves and for the vendor of this property whose agents they are, give notice that (i) these particulars do not constitute any part of an offer or contract, (ii) all statements contained within these particulars are made without responsibility on the part of Chestertons or the vendor, (iii) whilst made in good faith, none of the statements contained within these particulars are to be relied upon as a statement or representation of fact, (iv) any intending purchasers must satisfy themselves by inspection or otherwise as to the correctness of each of the statements contained within these particulars, (v) the vendor does not make or give either Chestertons or any person in their employment any authority to make or give representation or warranty whatsoever in relation to this property. Wide angle lenses may be used. ©Copyright Chestertons | Chesterton Global Ltd | Registered Office 40 Connaught Street, Hyde Park, London W2 2AB Registered Company Number 05334580.