



# Queens Gate

South Kensington, SW7

£3,500 per week  
(£15,166.67 pcm)

SHORT LET - A stunning four bedroom apartment arranged over the third floor (with lift) of this white stucco property. Benefits from a large reception, separate fitted kitchen and three contemporary bathrooms (two ensuite). EPC C.





# Queens Gate

## South Kensington, SW7

- Reception Room
- Kitchen/Breakfast Room
- Master Bedroom with Ensuite Bathroom
- Second Bedroom with Ensuite
- Three Further Bedrooms
- Shower Room
- Lift



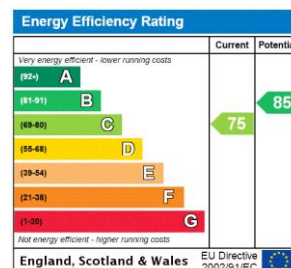


A stunning four bedroom apartment arranged over the third floor (with lift) of this white stucco property. Benefits from a large reception, separate fitted kitchen and three contemporary bathrooms (two ensuite). EPC C.

Queen's Gate is a desirable, tree lined street, moments from the excellent shops, restaurants and other amenities found in the Gloucester Road and South Kensington area. Easy access is provided to the A4/M4 with links to the M25, towards Heathrow Airport and the west. South Kensington Underground Station (Piccadilly, Circle and District lines) is also close by along with the green open spaces of Hyde Park and Kensington Palace Gardens.

**Tenure:** Leasehold  
**Furnished, Part Furnished**

Additional tenant charges apply (fees apply to non-AST tenancies only)  
Tenancy Agreement Fee: £300  
References per Tenant/Guarantor: £60  
Inventory check (approx. £100 – £250 inc. VAT)  
[chestertons.com/property-to-rent/applicable-fees](https://www.chestertons.com/property-to-rent/applicable-fees)



### *Chestertons South Kensington Lettings*

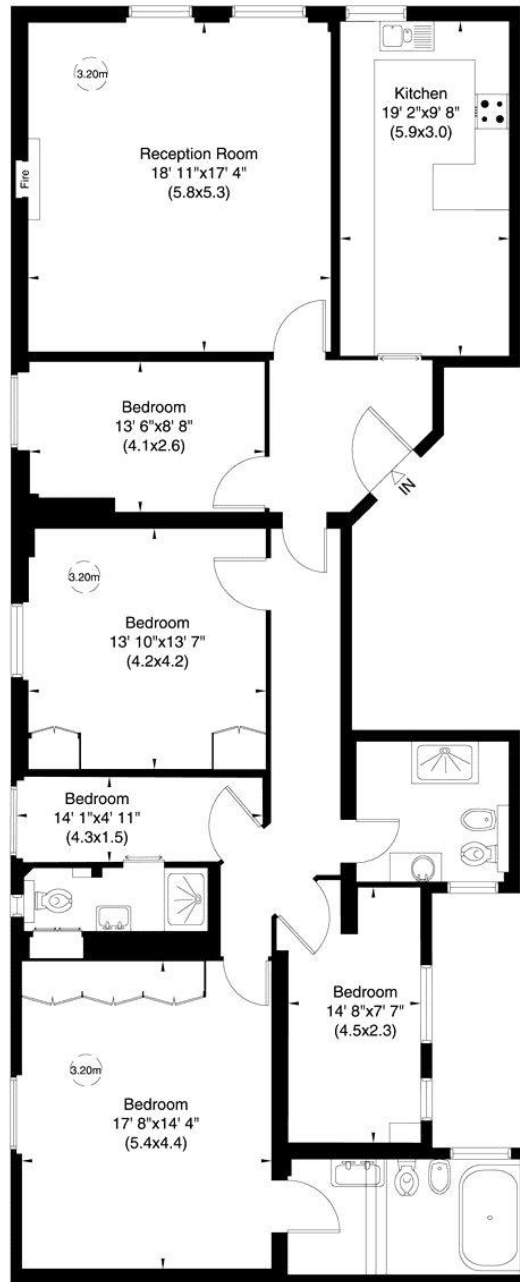
44-48 Old Brompton Road  
South Kensington  
London  
SW7 3DY  
[lettings.southkensington@chestertons.com](mailto:lettings.southkensington@chestertons.com)  
02075891244  
[chestertons.com](https://www.chestertons.com)

# Queens Gate, SW7

Gross internal area (approx.)

1740 Sq ft (162 Sq m)

For identification only, Not to Scale



Third Floor

Not to scale, for guidance only and must not be relied upon as a statement of fact. All measurements and areas are approximate only (and have been prepared in accordance with the current edition of the RICS Code of Measuring Practice).

