



SOLENT VIEW
APARTMENTS

SOUTHSEA



141 HAVANT ROAD,
DRAYTON,
HAMPSHIRE,
PO6 2AA

TEL: 02393 277 277

FOR MORE INFORMATION REGISTER
YOUR INTEREST AT;

www.solentviewapartments.co.uk



EXCLUSIVE
ONE, TWO & THREE BEDROOM
SEA VIEW AND DUPLEX
APARTMENTS

St Helens Parade Southsea, Southsea,
Portsmouth, Southsea PO4 0RN



ABOUT SOLENT VIEW

A prestigious development of an iconic Southsea hotel, Solent View sits proudly on the South Parade with unprecedented views of the Solent and beyond. An Exclusive development of bespoke One , Two and Three bedroom apartments and duplexes many of which have unrivalled sea views.

The building has tastefully undergone a conversion from hotel over the last 18 months, having now been transformed with an eye for finer details, you will not be left disappointed.

Available early 2024 for completion.



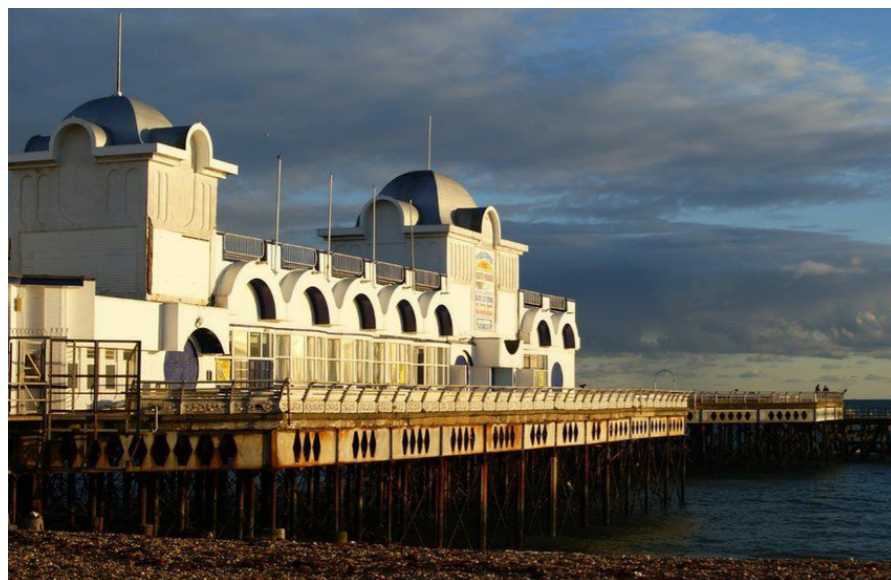


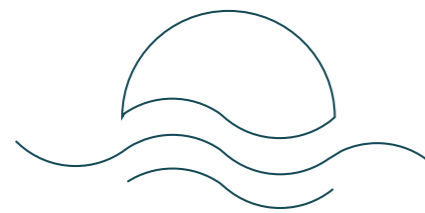
THE LOCAL LIFE

A charming blend of maritime heritage and architectural quality. Southsea is a cultural hub, with a wealth of local history. Nestled on the southern side of Portsmouth – with views across to the Isle of Wight – the coastal resort of Southsea has traditional British waterfront charm, with a fresh air of trendiness brought by the increasing number of independent shops and eateries that now reside in this special slice of seaside England.

There are few destinations that could rival such a cool coastal culture combined with a history dating back to the first ships to leave British shores. Southsea looks out upon the Solent where sea forts are passed by ferries, cruise liners, Royal Navy ships, and even Ben Ainslie's INEOS Team UK racing sailing yachts.

If you can tear yourself away from the ever-changing and lively views across the water, there is much to explore upon the shore in Southsea – delve into the area's vibrant character and enjoy beach days, history hunting, attractions, and events.





TRANSPORT LINKS

A stones throw away from the beach, Solent view apartments is in a prime location for transport links. Fratton station is a quick 7 minute drive or 10 minute bike ride and connects trains across the south, with 3 direct trains an hour heading into London Waterloo. Cycle and bus routes along the seafront, getting around Portsmouth is made simple.



30 second walk



BEACH



15 minute bike



GUNWHARF QUAYS



20 minute walk



ISLE OF WIGHT CROSSINGS



10 minute bike



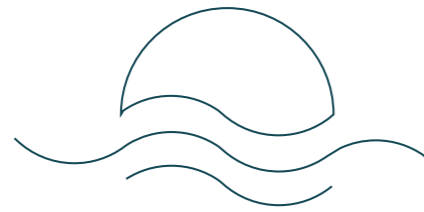
FRATTON TRAIN STATION

1hour 45min to London Waterloo

1hour 45min to Brighton

40mins to Southampton





DETAILS OF SPECIFICATIONS

Nude oak parquet flooring



Bespoke German kitchens with Quartz counter tops



Neff appliances



Claybrook feature tiles to bathrooms



Crosswater chrome sanitaryware



Plush carpet to bedrooms



Traditional architectural features with arched openings and pillar radiators



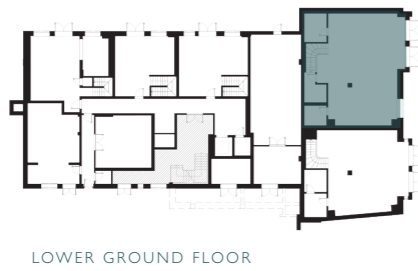
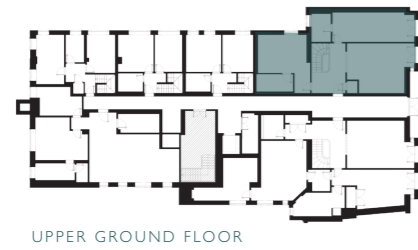
Computer Generated Imagery



Computer Generated Imagery



PLOT 1
2 BED DUPLEX
(Sea Views)



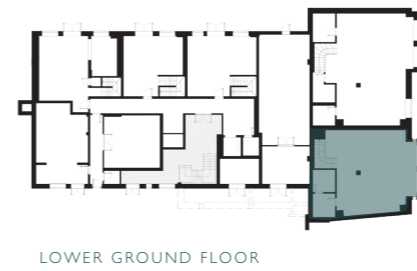
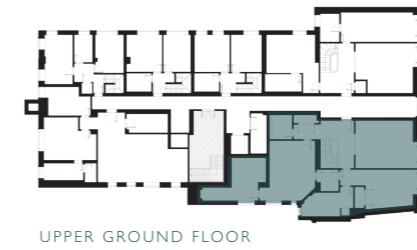
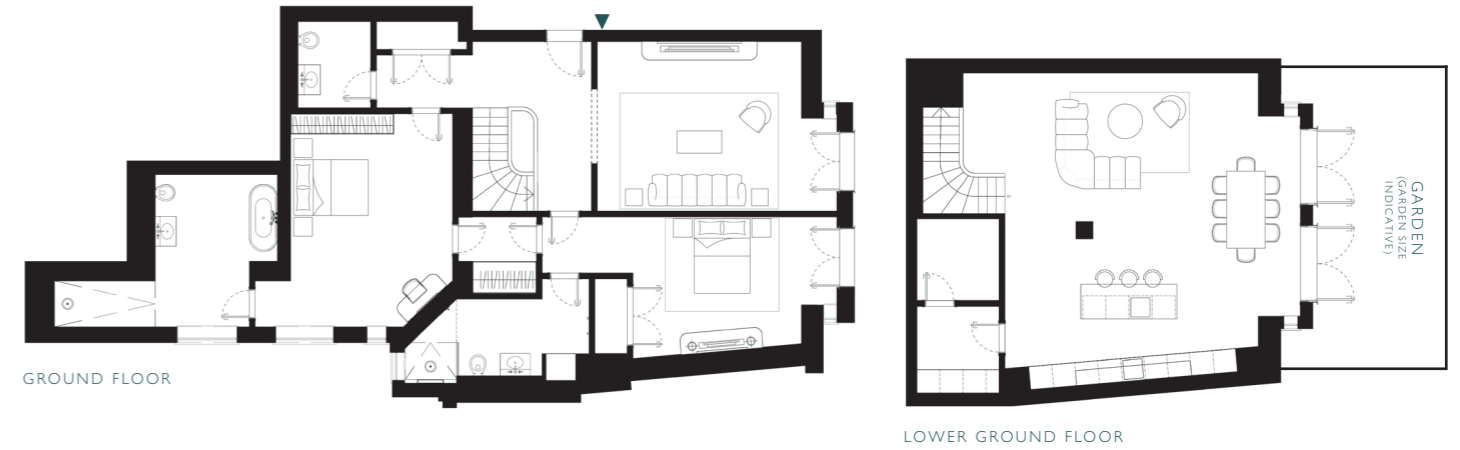
TOTAL SQM: 200sqm (approx)
FLOOR: LOWER GROUND & GROUND FLOOR
BEDROOMS: 2
BATHROOMS: 3

Note plans shown are not to scale.

Whilst every attempt has been made to ensure the accuracy of the floor plans contained here, the dimensions shown are subject to minor variations, intended for guidance only and not intended to be used for carpet sizes, appliance sizes or items of furniture. Rooms are approximate and no responsibility is taken for any error, omission or misstatement. Please check with the Sales and Marketing team.



PLOT 2
2 BED DUPLEX
(Sea Views)



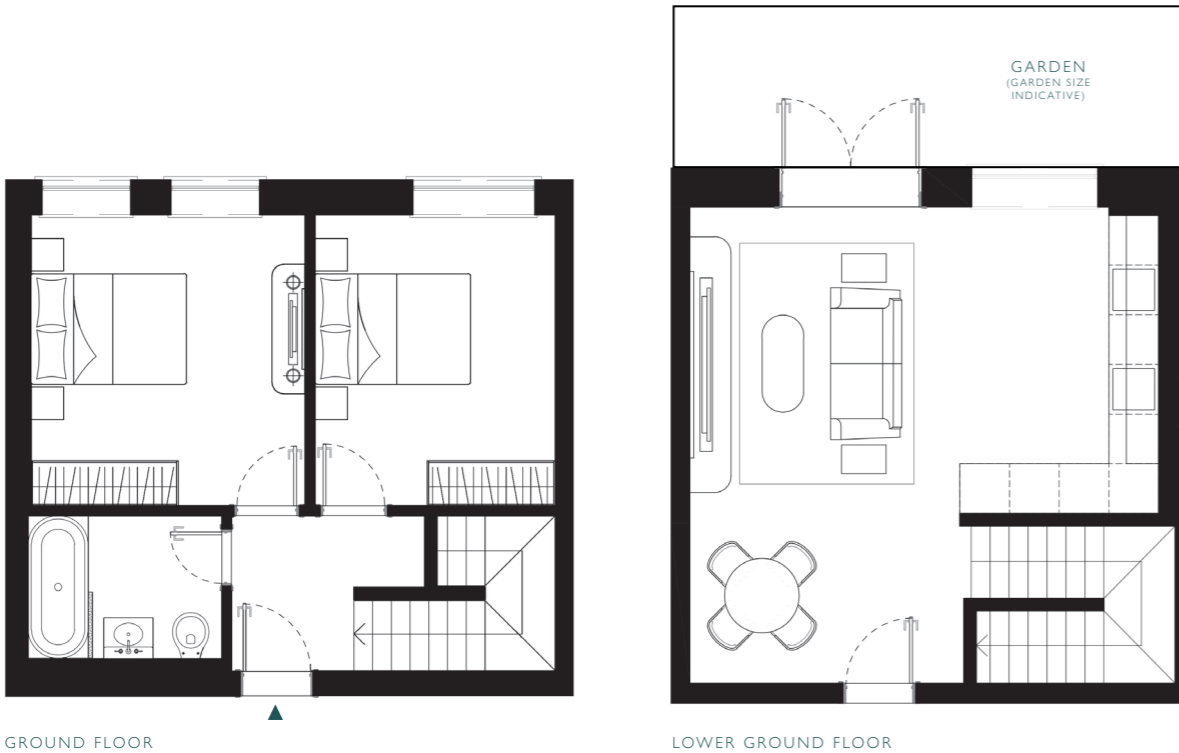
TOTAL SQM: 219sqm (approx)
FLOOR: LOWER GROUND & GROUND FLOOR
BEDROOMS: 2
BATHROOMS: 3

Note plans shown are not to scale.

Whilst every attempt has been made to ensure the accuracy of the floor plans contained here, the dimensions shown are subject to minor variations, intended for guidance only and not intended to be used for carpet sizes, appliance sizes or items of furniture. Rooms are approximate and no responsibility is taken for any error, omission or mis-statement. Please check with the Sales and Marketing team.



PLOT 3 & 4
2 BED DUPLEX



GROUND FLOOR

LOWER GROUND FLOOR



UPPER GROUND FLOOR



LOWER GROUND FLOOR

TOTAL SQM: 66sqm (approx)
FLOOR: LOWER GROUND & GROUND FLOOR
BEDROOMS: 2
BATHROOMS: 1

Note plans shown are not to scale.

Whilst every attempt has been made to ensure the accuracy of the floor plans contained here, the dimensions shown are subject to minor variations, intended for guidance only and not intended to be used for carpet sizes, appliance sizes or items of furniture. Rooms are approximate and no responsibility is taken for any error, omission or misstatement. Please check with the Sales and Marketing team.

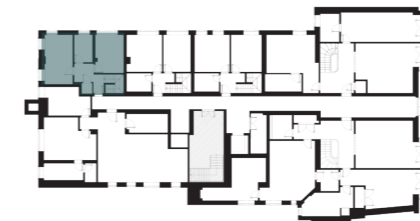


PLOT 5
2 BED DUPLEX

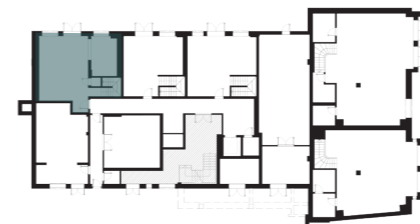


GROUND FLOOR

LOWER GROUND FLOOR



UPPER GROUND FLOOR



LOWER GROUND FLOOR

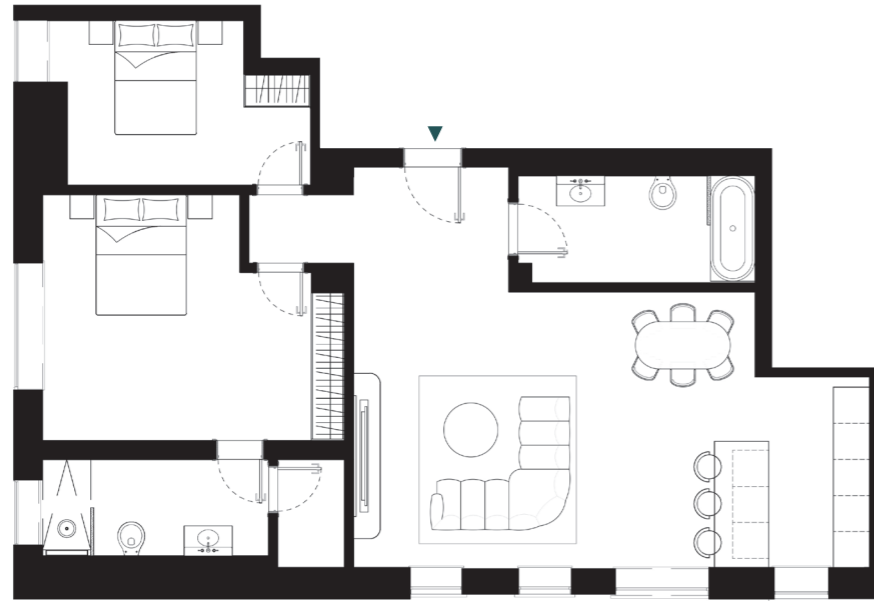
TOTAL SQM: 86sqm (approx)
FLOOR: LOWER GROUND & GROUND FLOOR
BEDROOMS: 2
BATHROOMS: 1

Note plans shown are not to scale.

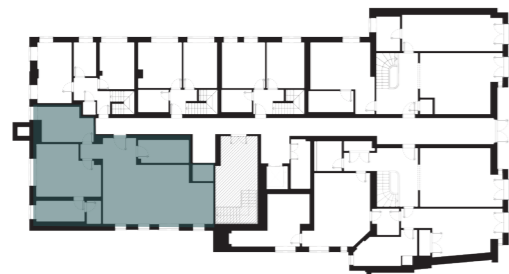
Whilst every attempt has been made to ensure the accuracy of the floor plans contained here, the dimensions shown are subject to minor variations, intended for guidance only and not intended to be used for carpet sizes, appliance sizes or items of furniture. Rooms are approximate and no responsibility is taken for any error, omission or misstatement. Please check with the Sales and Marketing team.



PLOT 6
2 BED APARTMENT



GROUND FLOOR

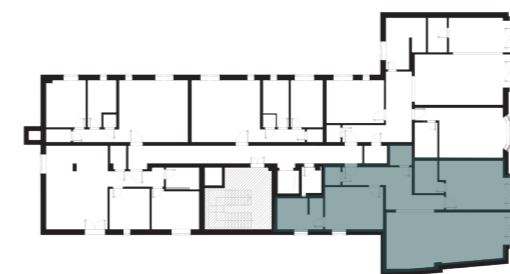
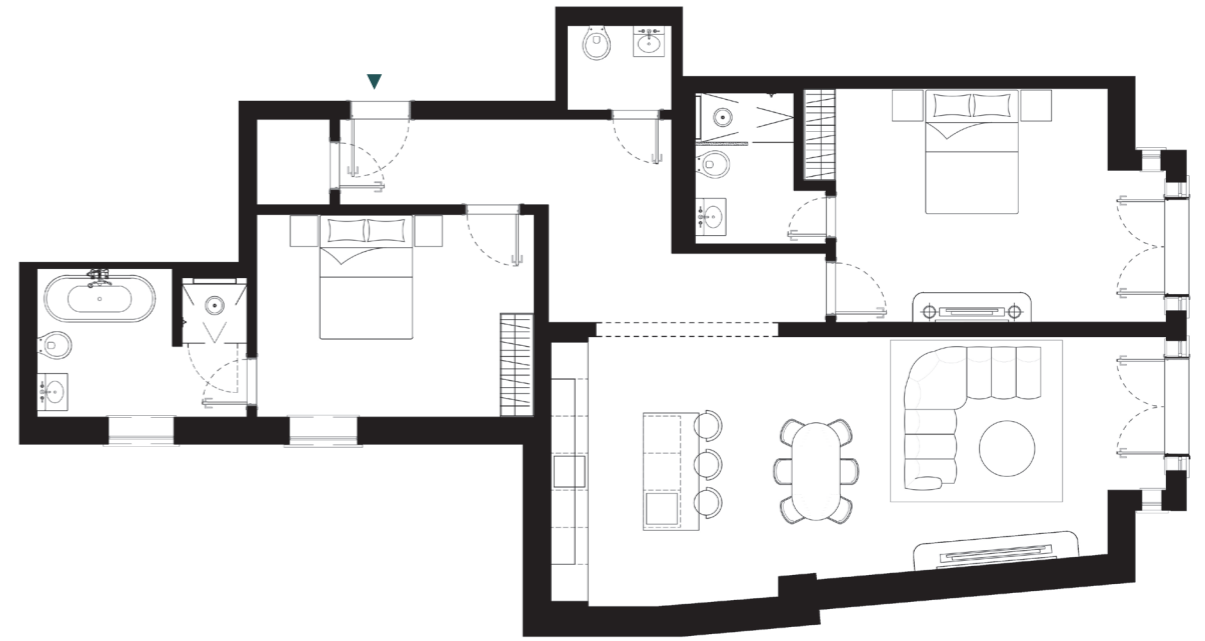


TOTAL SQM: 97sqm (approx)
FLOOR: GROUND FLOOR
BEDROOMS: 2
BATHROOMS: 2

*Note plans shown are not to scale.
Whilst every attempt has been made to ensure the accuracy of the floor plans contained here, the dimensions shown are subject to minor variations, intended for guidance only and not intended to be used for carpet sizes, appliance sizes or items of furniture. Rooms are approximate and no responsibility is taken for any error, omission or mis-statement.
Please check with the Sales and Marketing team.*



PLOT 7,12,17,22
2 BED APARTMENT
(Sea Views)

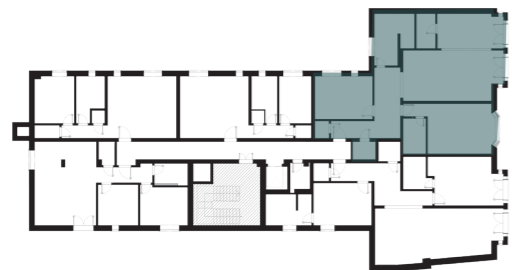
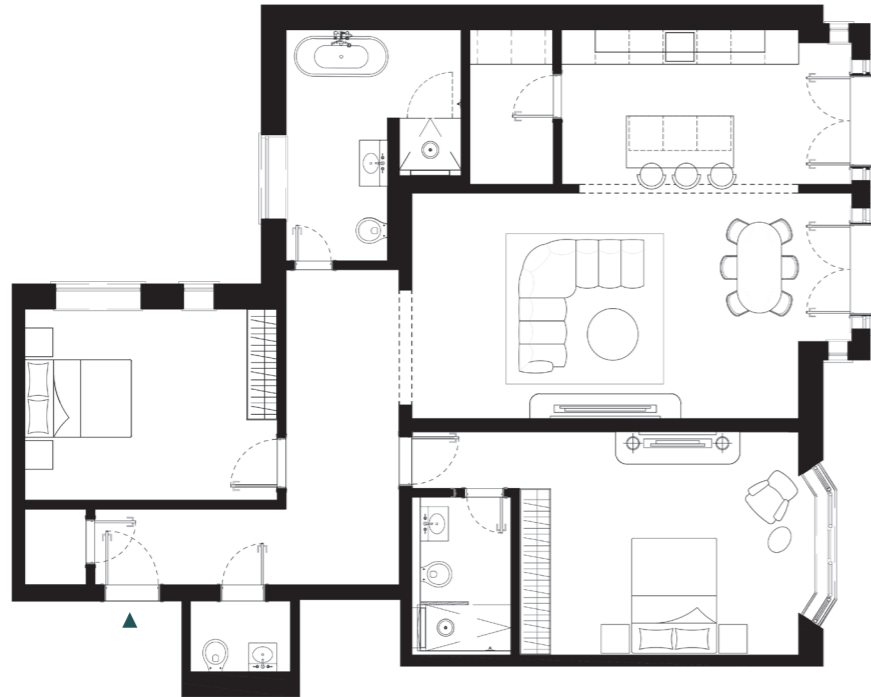


TOTAL SQM: 112sqm (approx)
FLOOR: 1st / 2nd / 3rd / 4th FLOORS
BEDROOMS: 2
BATHROOMS: 3

*Note plans shown are not to scale.
Whilst every attempt has been made to ensure the accuracy of the floor plans contained here, the dimensions shown are subject to minor variations, intended for guidance only and not intended to be used for carpet sizes, appliance sizes or items of furniture. Rooms are approximate and no responsibility is taken for any error, omission or mis-statement.
Please check with the Sales and Marketing team.*



PLOT 8,13,18,23
2 BED APARTMENT
(Sea Views)

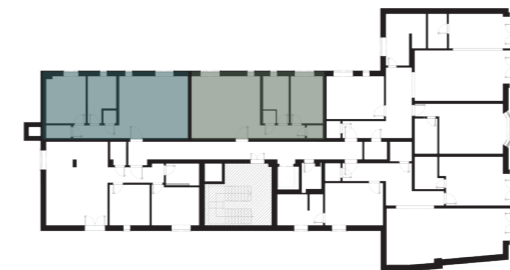
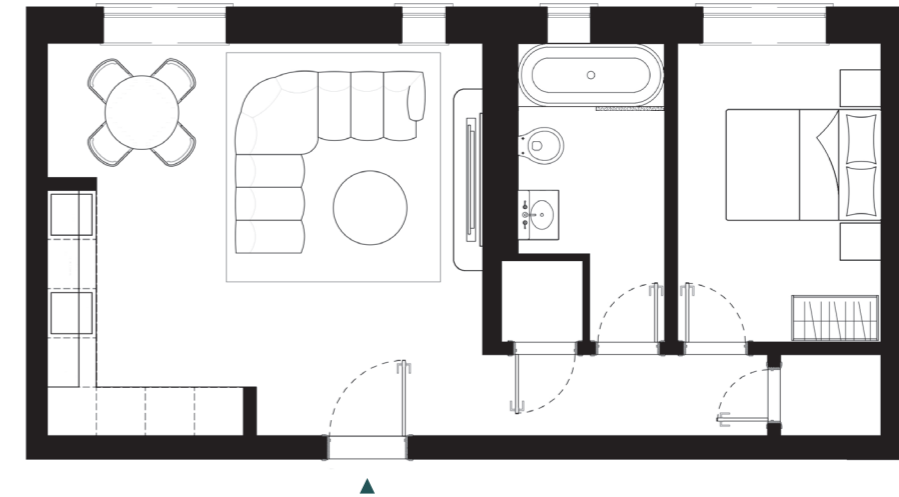


TOTAL SQM: 127sqm (approx)
FLOOR: 1st / 2nd / 3rd / 4th FLOORS
BEDROOMS: 2
BATHROOMS: 3

*Note plans shown are not to scale.
Whilst every attempt has been made to ensure the accuracy of the floor plans contained here, the dimensions shown are subject to minor variations, intended for guidance only and not intended to be used for carpet sizes, appliance sizes or items of furniture. Rooms are approximate and no responsibility is taken for any error, omission or mis-statement.
Please check with the Sales and Marketing team.*



PLOT 9,10,14,15,19,20,24,25
1 BED APARTMENT

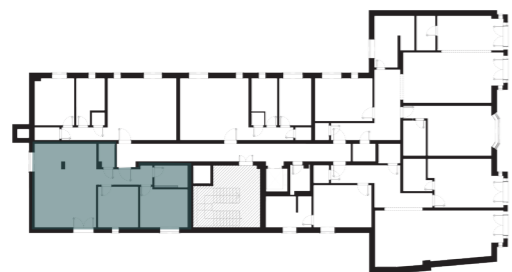
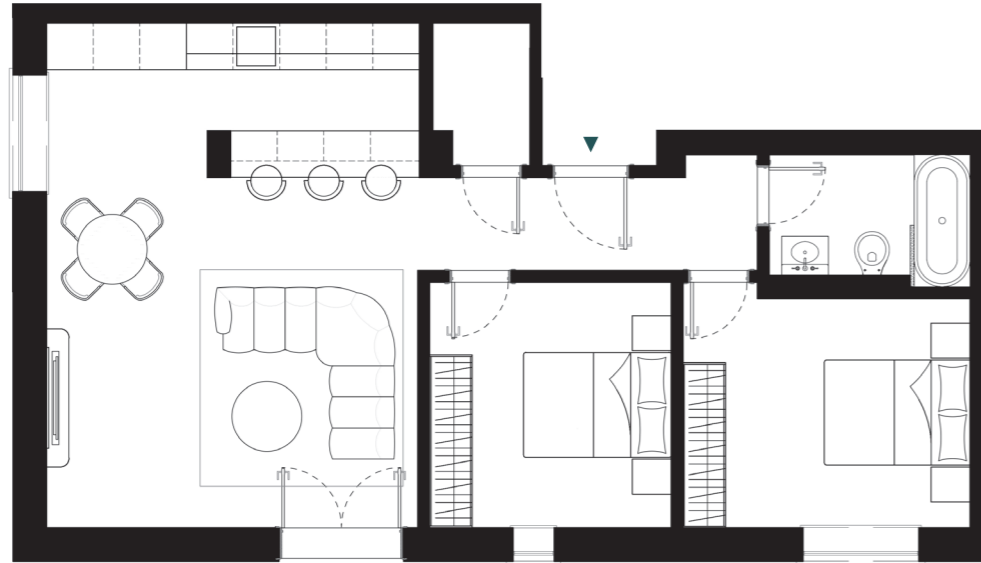


TOTAL SQM: 48-52sqm (approx)
FLOOR: 1st / 2nd / 3rd / 4th FLOORS
BEDROOMS: 1
BATHROOMS: 1

*Note plans shown are not to scale.
Whilst every attempt has been made to ensure the accuracy of the floor plans contained here, the dimensions shown are subject to minor variations, intended for guidance only and not intended to be used for carpet sizes, appliance sizes or items of furniture. Rooms are approximate and no responsibility is taken for any error, omission or mis-statement.
Please check with the Sales and Marketing team.*



PLOT 11,16,21,26
2 BED APARTMENT

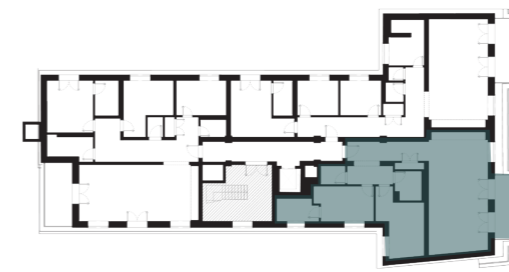
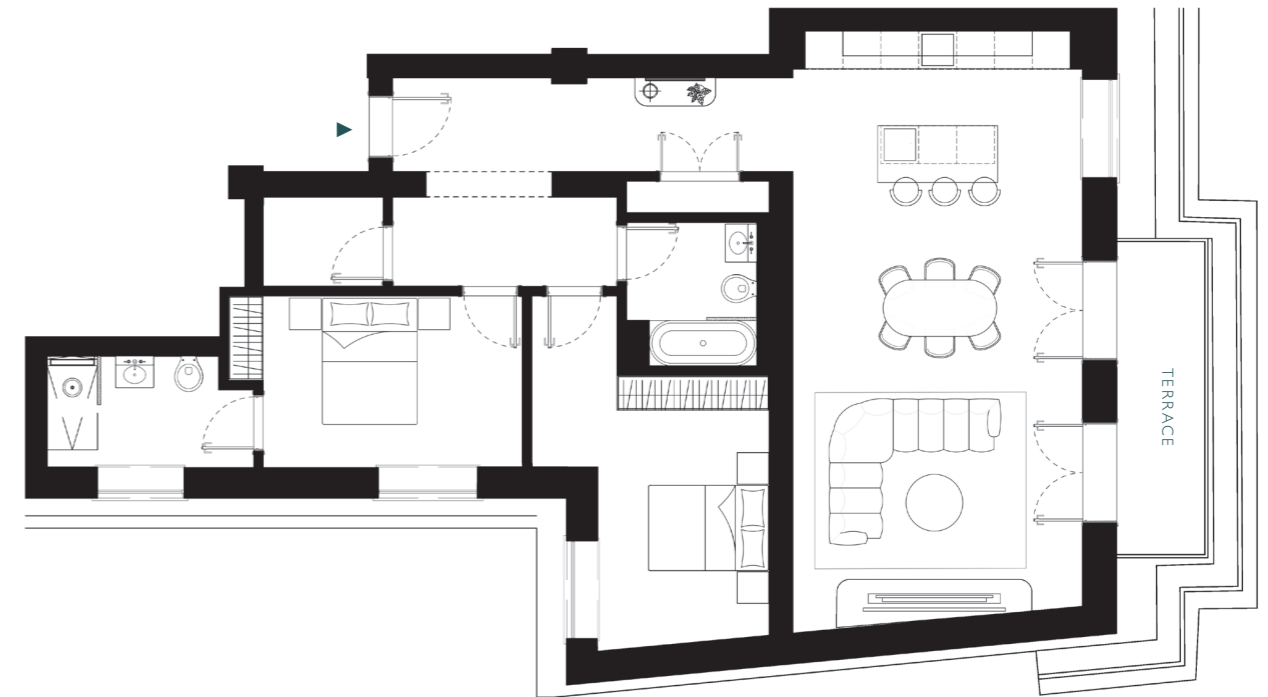


TOTAL SQM: 68sqm (approx)
FLOOR: 1st / 2nd / 3rd / 4th FLOORS
BEDROOMS: 2
BATHROOMS: 1

*Note plans shown are not to scale.
Whilst every attempt has been made to ensure the accuracy of the floor plans contained here, the dimensions shown are subject to minor variations, intended for guidance only and not intended to be used for carpet sizes, appliance sizes or items of furniture. Rooms are approximate and no responsibility is taken for any error, omission or misstatement.
Please check with the Sales and Marketing team.*



PLOT 27
PENTHOUSE
2 BED APARTMENT
(Sea Views)

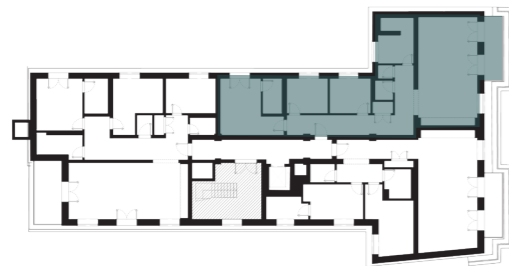
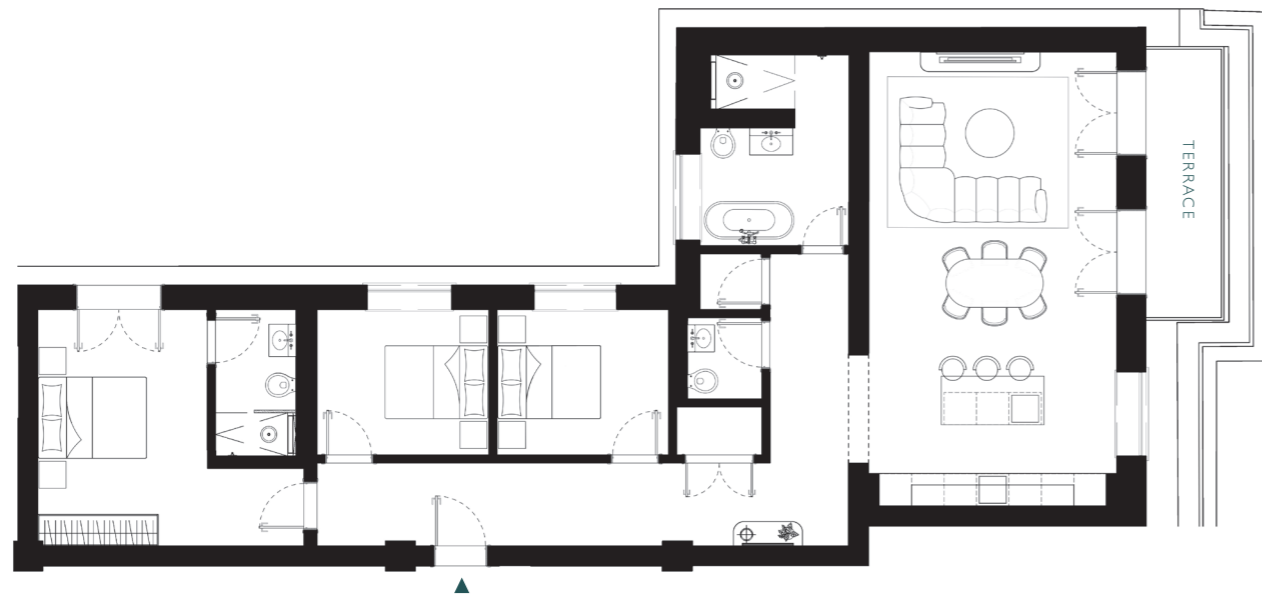


TOTAL SQM: 116sqm (approx)
FLOOR: 5TH FLOOR
BEDROOMS: 2
BATHROOMS: 2
TERRACE: YES

*Note plans shown are not to scale.
Whilst every attempt has been made to ensure the accuracy of the floor plans contained here, the dimensions shown are subject to minor variations, intended for guidance only and not intended to be used for carpet sizes, appliance sizes or items of furniture. Rooms are approximate and no responsibility is taken for any error, omission or misstatement.
Please check with the Sales and Marketing team.*



PLOT 28
PENTHOUSE
3 BED APARTMENT
(Sea Views)

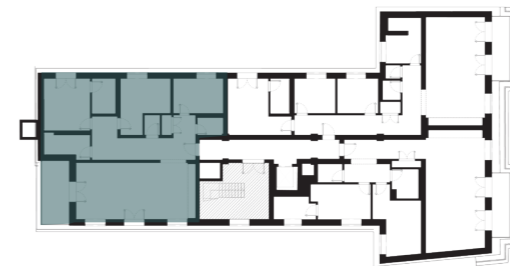


TOTAL SQM: 129sqm (approx)
FLOOR: 5TH FLOOR
BEDROOMS: 3
BATHROOMS: 3
TERRACE: YES

*Note plans shown are not to scale.
Whilst every attempt has been made to ensure the accuracy of the floor plans contained here, the dimensions shown are subject to minor variations, intended for guidance only and not intended to be used for carpet sizes, appliance sizes or items of furniture. Rooms are approximate and no responsibility is taken for any error, omission or mis-statement.
Please check with the Sales and Marketing team.*



PLOT 29
PENTHOUSE
2 BED APARTMENT



TOTAL SQM: 139sqm (approx)
FLOOR: 5TH FLOOR
BEDROOMS: 3
BATHROOMS: 3
TERRACE: YES

*Note plans shown are not to scale.
Whilst every attempt has been made to ensure the accuracy of the floor plans contained here, the dimensions shown are subject to minor variations, intended for guidance only and not intended to be used for carpet sizes, appliance sizes or items of furniture. Rooms are approximate and no responsibility is taken for any error, omission or mis-statement.
Please check with the Sales and Marketing team.*



141 HAVANT ROAD,
DRAYTON,
HAMPSHIRE,
PO6 2AA

TEL: 02393 277 277

FOR MORE INFORMATION REGISTER
YOUR INTEREST AT;

www.solentviewapartments.co.uk



St Helens Parade Southsea, Southsea,
Portsmouth, Southsea PO4 0RN