



SOLENT VIEW  
APARTMENTS

SOUTHSEA



141 HAVANT ROAD,  
DRAYTON,  
HAMPSHIRE,  
PO6 2AA

TEL: 02393 277 277

FOR MORE INFORMATION REGISTER  
YOUR INTEREST AT;

[www.solentviewapartments.co.uk](http://www.solentviewapartments.co.uk)



EXCLUSIVE  
ONE, TWO & THREE BEDROOM  
SEA VIEW AND DUPLEX  
APARTMENTS

St Helens Parade, Southsea, Portsmouth,  
PO4 0RN





## ABOUT SOLENT VIEW

A prestigious development of an iconic Southsea hotel, Solent View sits proudly on the St Helens Parade with unprecedented views of the Solent. An Exclusive development of bespoke One , Two and Three bedroom apartments and duplexes many of which have unrivalled sea views.

The building has tastefully undergone a conversion from hotel over the last 18 months, having now been transformed with an eye for finer details, you will not be left disappointed.

*Available early 2024 for completion.*





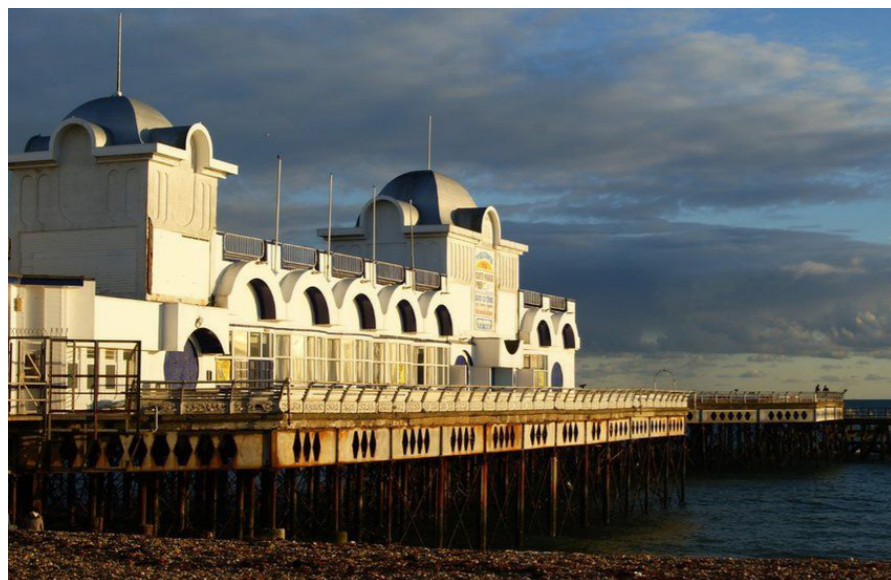


## THE LOCAL LIFE

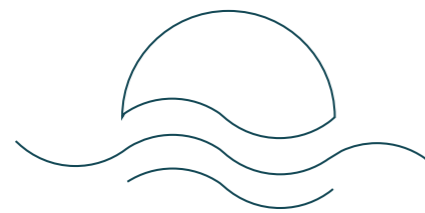
A charming blend of maritime heritage and architectural quality. Southsea is a cultural hub, with a wealth of local history. Nestled on the southern side of Portsmouth – with views across to the Isle of Wight – the coastal resort of Southsea has traditional British waterfront charm, with a fresh air of trendiness brought by the increasing number of independent shops and eateries that now reside in this special slice of seaside England.

There are few destinations that could rival such a cool coastal culture combined with a history dating back to the first ships to leave British shores. Southsea looks out upon the Solent where sea forts are passed by ferries, cruise liners and Royal Navy ships.

If you can tear yourself away from the ever-changing and lively views across the water, there is much to explore upon the shore in Southsea – delve into the area's vibrant character and enjoy beach days, history hunting, attractions, and events.







## TRANSPORT LINKS

A stones throw away from the beach, Solent view apartments is in a prime location for transport links. Fratton station is a quick 7 minute drive or 10 minute bike ride and connects trains across the south, with 3 direct trains an hour heading into London Waterloo. Cycle and bus routes along the seafront, getting around Portsmouth is made simple.



30 second walk



BEACH



15 minute bike



GUNWHARF QUAYS



20 minute walk



ISLE OF WIGHT CROSSINGS



10 minute bike



FRATTON TRAIN STATION

1hour 45min to London Waterloo

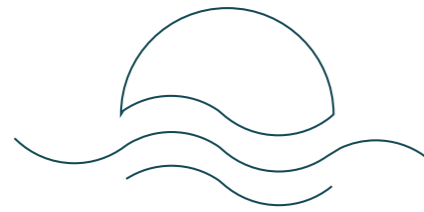
1hour 45min to Brighton

40mins to Southampton









DETAILS OF  
SPECIFICATIONS

*Nude oak parquet flooring*



*Bespoke German kitchens with Quartz  
counter tops*



*Neff appliances*



*Claybrook feature tiled bathrooms*



*Crosswater chrome sanitaryware*



*Plush carpeted bedrooms*



*Traditional architectural features with arched  
openings and pillar radiators*



Computer Generated Imagery



Computer Generated Imagery





PLOT 1  
2 BED DUPLEX  
(Sea Views)



GROUND FLOOR

LOWER GROUND FLOOR



UPPER GROUND FLOOR



LOWER GROUND FLOOR

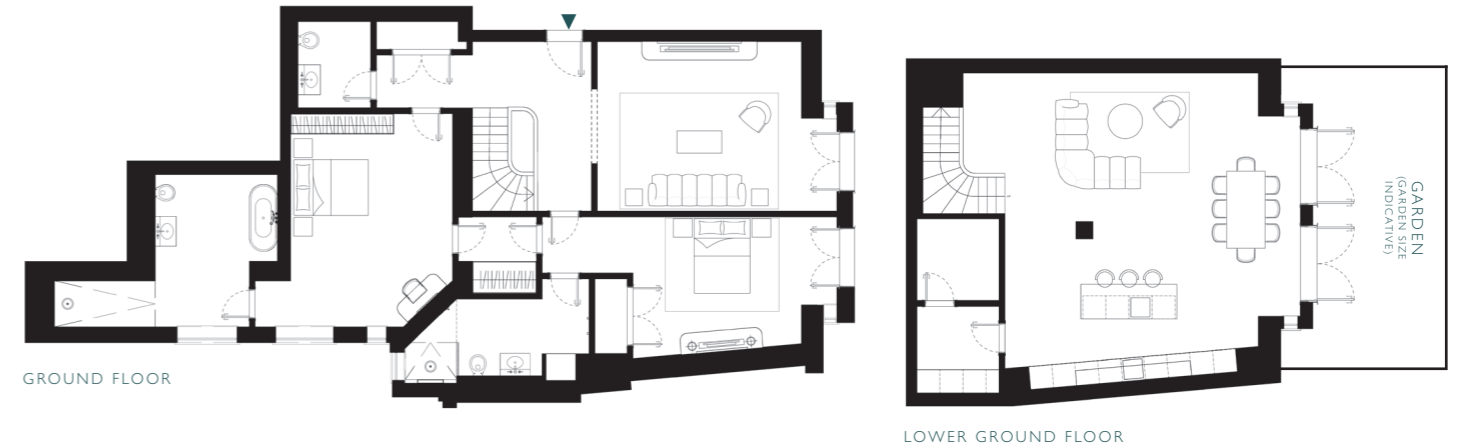
TOTAL SQM: 200sqm (approx)  
FLOOR: LOWER GROUND & GROUND FLOOR  
BEDROOMS: 2  
BATHROOMS: 2

*Note plans shown are not to scale.*

*Whilst every attempt has been made to ensure the accuracy of the floor plans contained here, the dimensions shown are subject to minor variations, intended for guidance only and not intended to be used for carpet sizes, appliance sizes or items of furniture. Rooms are approximate and no responsibility is taken for any error, omission or misstatement. Please check with the Sales and Marketing team.*



PLOT 2  
2 BED DUPLEX  
(Sea Views)



GROUND FLOOR

LOWER GROUND FLOOR



UPPER GROUND FLOOR



LOWER GROUND FLOOR

TOTAL SQM: 219sqm (approx)  
FLOOR: LOWER GROUND & GROUND FLOOR  
BEDROOMS: 2  
BATHROOMS: 2

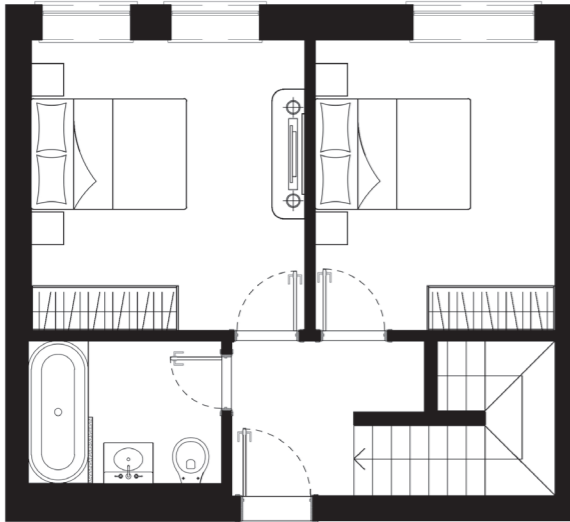
*Note plans shown are not to scale.*

*Whilst every attempt has been made to ensure the accuracy of the floor plans contained here, the dimensions shown are subject to minor variations, intended for guidance only and not intended to be used for carpet sizes, appliance sizes or items of furniture. Rooms are approximate and no responsibility is taken for any error, omission or misstatement. Please check with the Sales and Marketing team.*

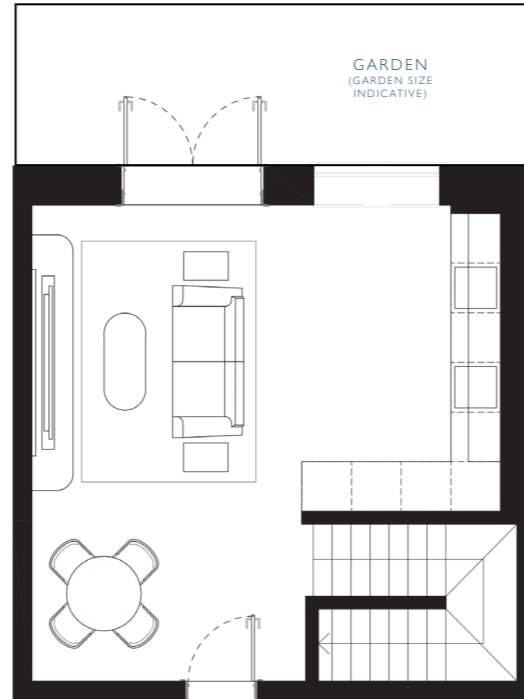




PLOT 3 & 4  
2 BED DUPLEX



GROUND FLOOR



LOWER GROUND FLOOR



UPPER GROUND FLOOR



LOWER GROUND FLOOR

TOTAL SQM: 66sqm (approx)  
FLOOR: LOWER GROUND & GROUND FLOOR  
BEDROOMS: 2  
BATHROOMS: 1

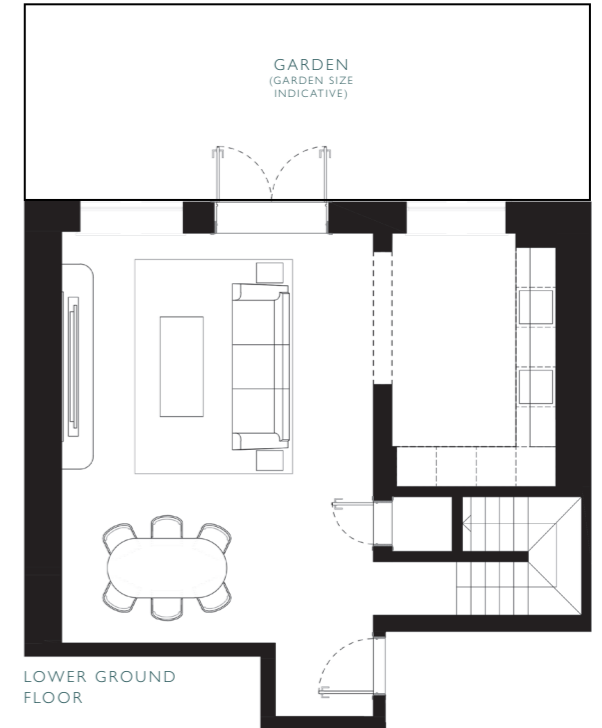
*Note plans shown are not to scale.  
Whilst every attempt has been made to ensure the accuracy of the floor plans contained here, the dimensions shown are subject to minor variations, intended for guidance only and not intended to be used for carpet sizes, appliance sizes or items of furniture. Rooms are approximate and no responsibility is taken for any error, omission or mis-statement.  
Please check with the Sales and Marketing team.*



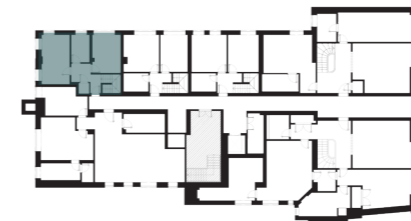
PLOT 5  
2 BED DUPLEX



GROUND FLOOR



LOWER GROUND FLOOR



UPPER GROUND FLOOR



LOWER GROUND FLOOR

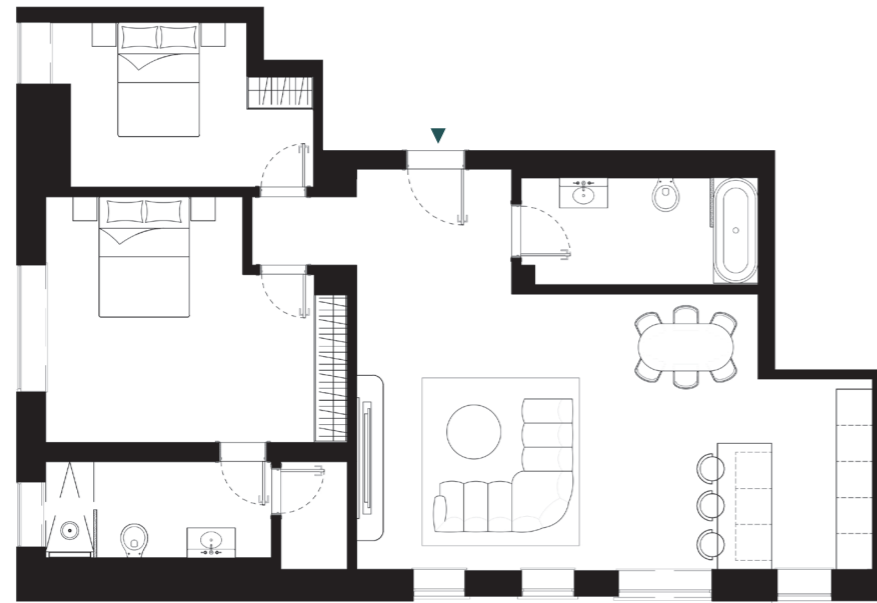
TOTAL SQM: 86sqm (approx)  
FLOOR: LOWER GROUND & GROUND FLOOR  
BEDROOMS: 2  
BATHROOMS: 1

*Note plans shown are not to scale.  
Whilst every attempt has been made to ensure the accuracy of the floor plans contained here, the dimensions shown are subject to minor variations, intended for guidance only and not intended to be used for carpet sizes, appliance sizes or items of furniture. Rooms are approximate and no responsibility is taken for any error, omission or mis-statement.  
Please check with the Sales and Marketing team.*





PLOT 6  
2 BED APARTMENT



GROUND FLOOR

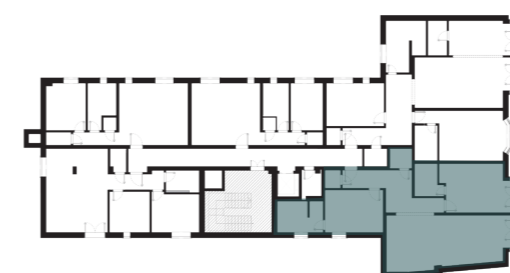
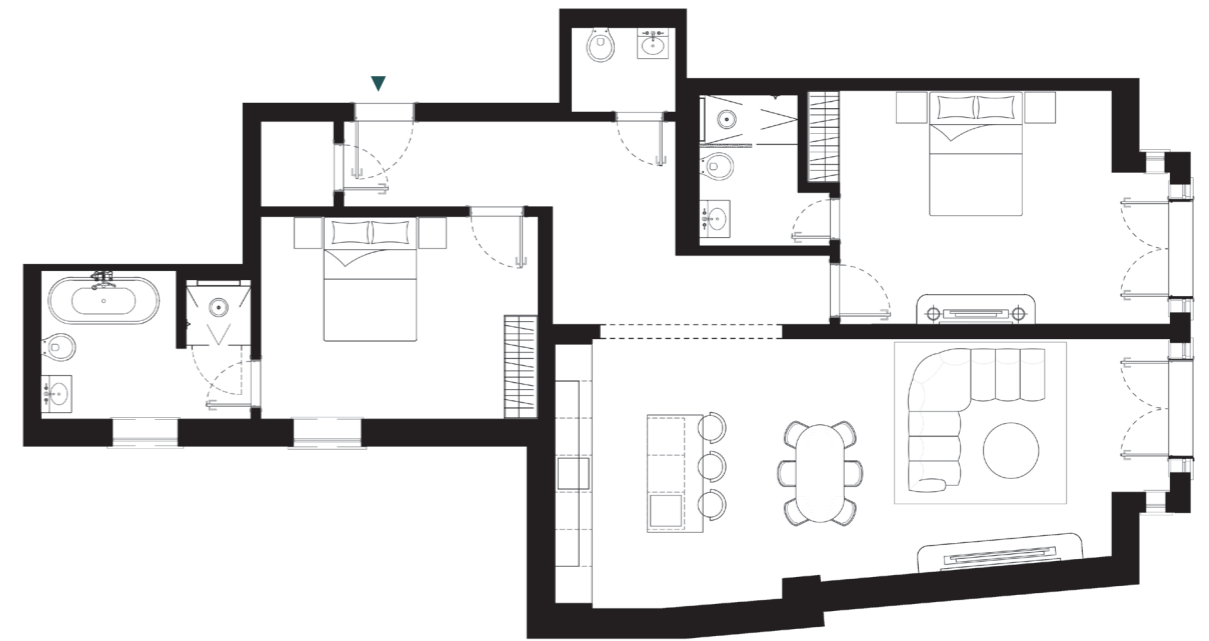


TOTAL SQM: 97sqm (approx)  
FLOOR: GROUND FLOOR  
BEDROOMS: 2  
BATHROOMS: 2

*Note plans shown are not to scale.  
Whilst every attempt has been made to ensure the accuracy of the floor plans contained here, the dimensions shown are subject to minor variations, intended for guidance only and not intended to be used for carpet sizes, appliance sizes or items of furniture. Rooms are approximate and no responsibility is taken for any error, omission or mis-statement.  
Please check with the Sales and Marketing team.*



PLOT 7,12,17,22  
2 BED APARTMENT  
(Sea Views)



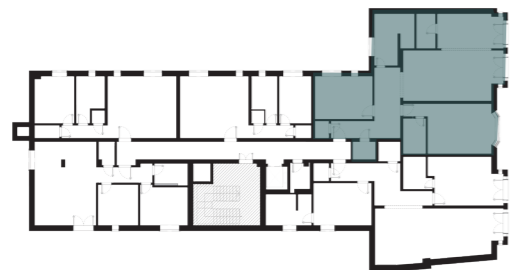
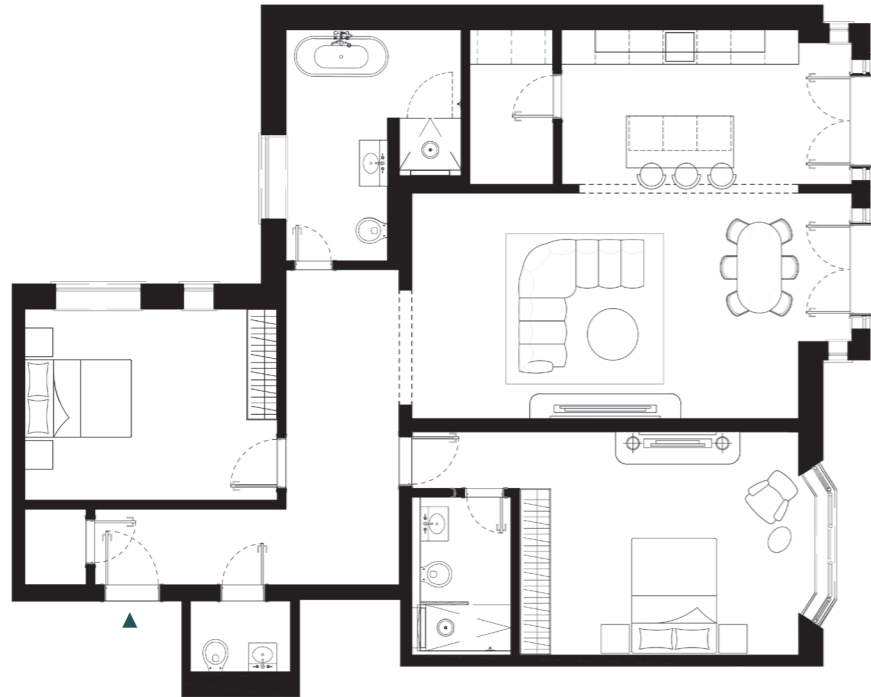
TOTAL SQM: 112sqm (approx)  
FLOOR: 1st / 2nd / 3rd / 4th FLOORS  
BEDROOMS: 2  
BATHROOMS: 2

*Note plans shown are not to scale.  
Whilst every attempt has been made to ensure the accuracy of the floor plans contained here, the dimensions shown are subject to minor variations, intended for guidance only and not intended to be used for carpet sizes, appliance sizes or items of furniture. Rooms are approximate and no responsibility is taken for any error, omission or mis-statement.  
Please check with the Sales and Marketing team.*





PLOT 8,13,18,23  
2 BED APARTMENT  
*(Sea Views)*

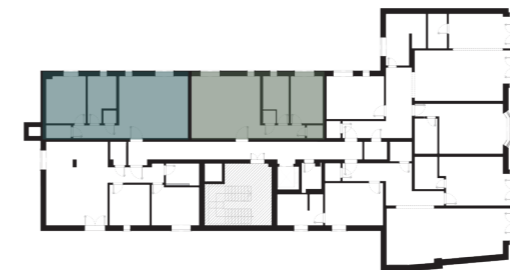
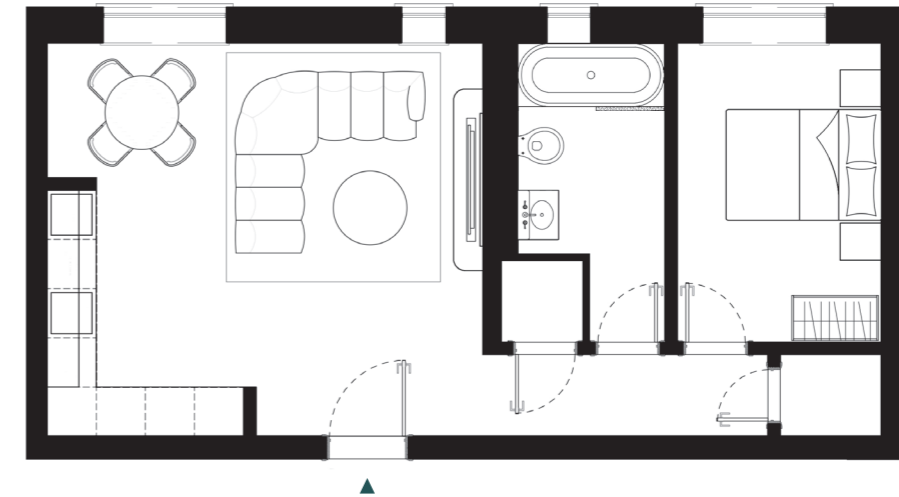


TOTAL SQM: 127sqm (approx)  
FLOOR: 1st / 2nd / 3rd / 4th FLOORS  
BEDROOMS: 2  
BATHROOMS: 2

*Note plans shown are not to scale.  
Whilst every attempt has been made to ensure the accuracy of the floor plans contained here, the dimensions shown are subject to minor variations, intended for guidance only and not intended to be used for carpet sizes, appliance sizes or items of furniture. Rooms are approximate and no responsibility is taken for any error, omission or mis-statement.  
Please check with the Sales and Marketing team.*



PLOT 9,10,14,15,19,20,24,25  
1 BED APARTMENT



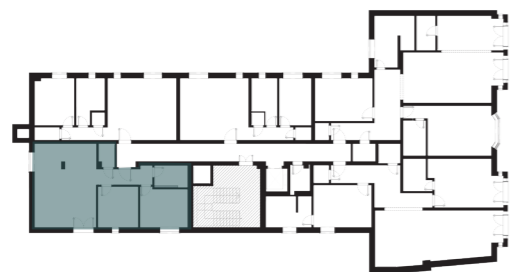
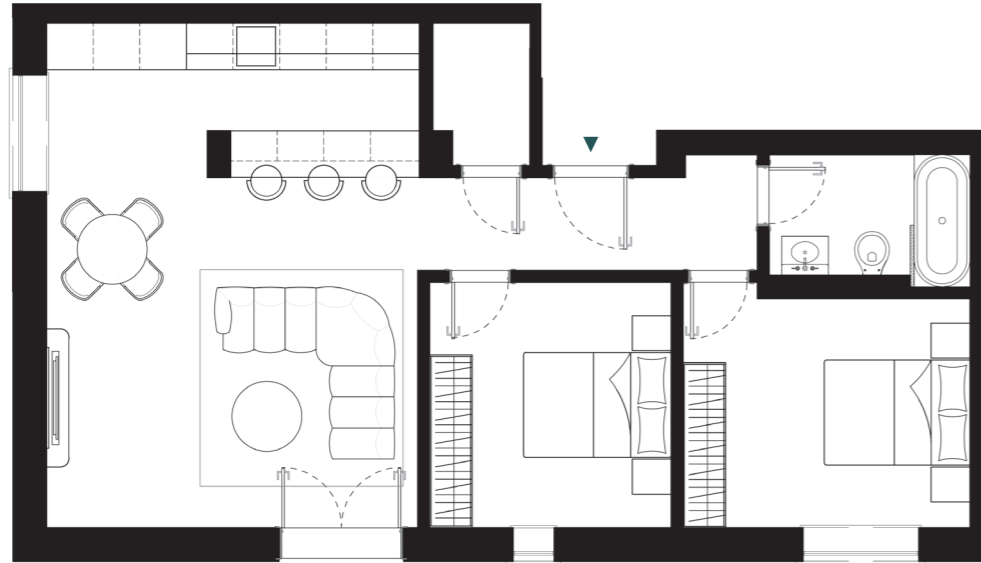
TOTAL SQM: 48-52sqm (approx)  
FLOOR: 1st / 2nd / 3rd / 4th FLOORS  
BEDROOMS: 1  
BATHROOMS: 1

*Note plans shown are not to scale.  
Whilst every attempt has been made to ensure the accuracy of the floor plans contained here, the dimensions shown are subject to minor variations, intended for guidance only and not intended to be used for carpet sizes, appliance sizes or items of furniture. Rooms are approximate and no responsibility is taken for any error, omission or mis-statement.  
Please check with the Sales and Marketing team.*





PLOT 11,16,21,26  
2 BED APARTMENT

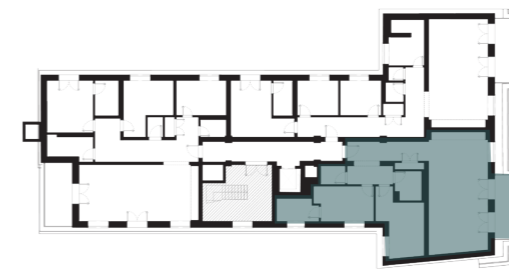
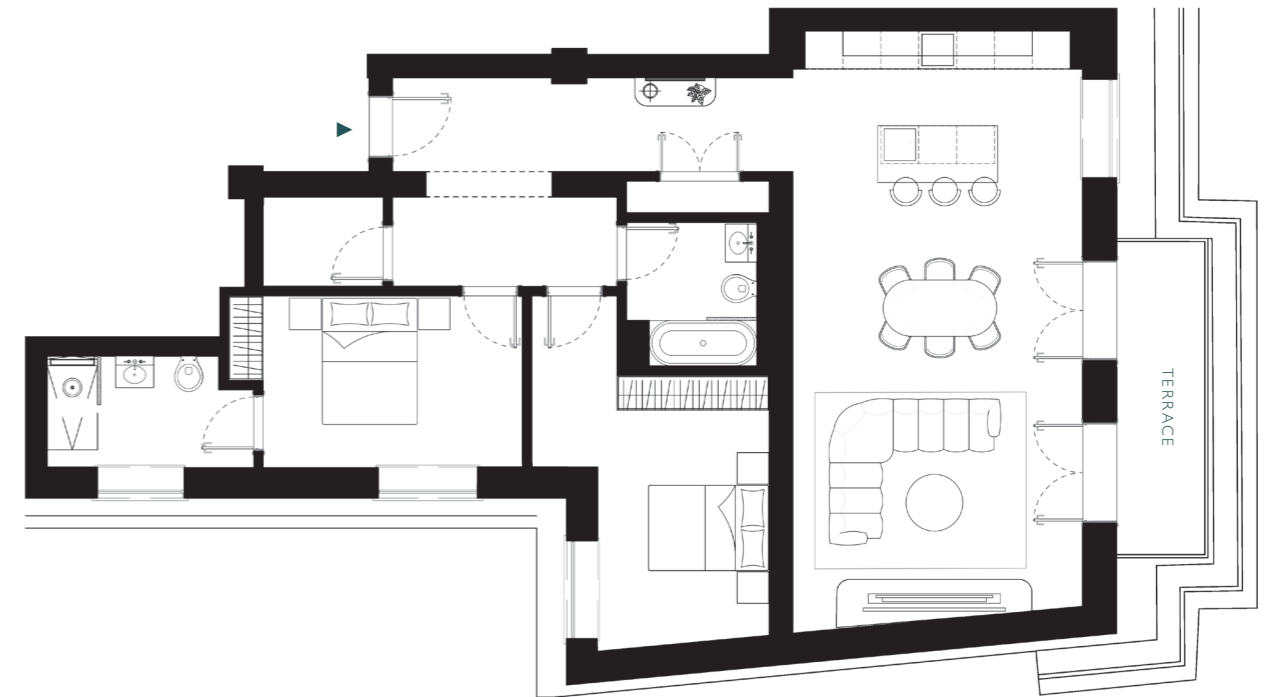


TOTAL SQM: 68sqm (approx)  
FLOOR: 1st / 2nd / 3rd / 4th FLOORS  
BEDROOMS: 2  
BATHROOMS: 1

*Note plans shown are not to scale.  
Whilst every attempt has been made to ensure the accuracy of the floor plans contained here, the dimensions shown are subject to minor variations, intended for guidance only and not intended to be used for carpet sizes, appliance sizes or items of furniture. Rooms are approximate and no responsibility is taken for any error, omission or mis-statement.  
Please check with the Sales and Marketing team.*



PLOT 27  
PENTHOUSE  
2 BED APARTMENT  
(Sea Views)



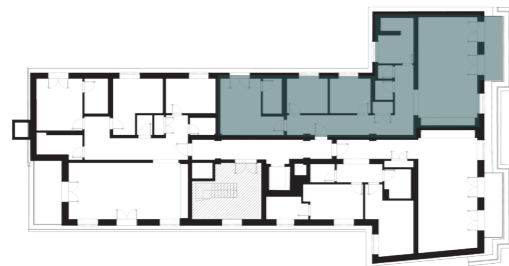
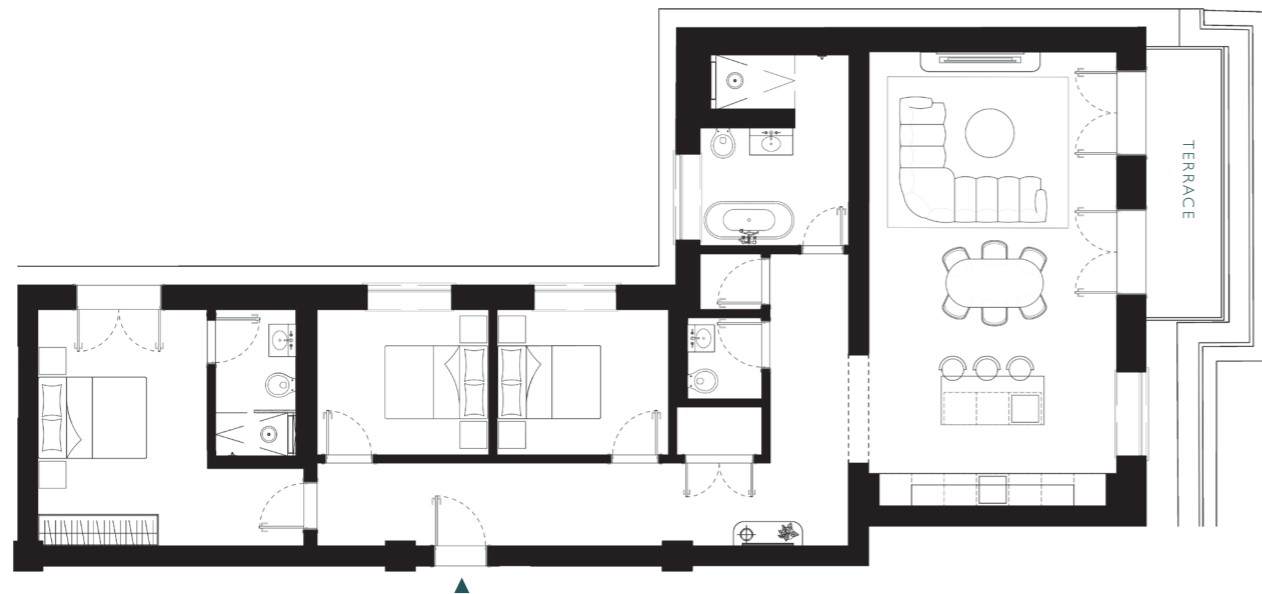
TOTAL SQM: 116sqm (approx)  
FLOOR: 5TH FLOOR  
BEDROOMS: 2  
BATHROOMS: 2  
TERRACE: YES

*Note plans shown are not to scale.  
Whilst every attempt has been made to ensure the accuracy of the floor plans contained here, the dimensions shown are subject to minor variations, intended for guidance only and not intended to be used for carpet sizes, appliance sizes or items of furniture. Rooms are approximate and no responsibility is taken for any error, omission or mis-statement.  
Please check with the Sales and Marketing team.*





PLOT 28  
PENTHOUSE  
3 BED APARTMENT  
*(Sea Views)*

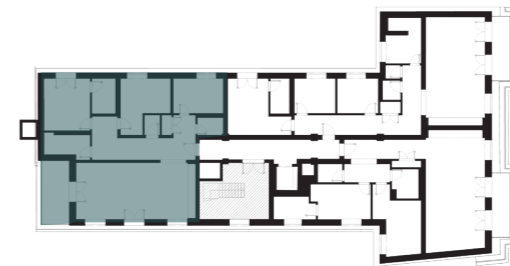


TOTAL SQM: 129sqm (approx)  
FLOOR: 5TH FLOOR  
BEDROOMS: 3  
BATHROOMS: 2  
TERRACE: YES

*Note plans shown are not to scale.  
Whilst every attempt has been made to ensure the accuracy of the floor plans contained here, the dimensions shown are subject to minor variations, intended for guidance only and not intended to be used for carpet sizes, appliance sizes or items of furniture. Rooms are approximate and no responsibility is taken for any error, omission or mis-statement.  
Please check with the Sales and Marketing team.*



PLOT 29  
PENTHOUSE  
2 BED APARTMENT



TOTAL SQM: 139sqm (approx)  
FLOOR: 5TH FLOOR  
BEDROOMS: 3  
BATHROOMS: 2  
TERRACE: YES

*Note plans shown are not to scale.  
Whilst every attempt has been made to ensure the accuracy of the floor plans contained here, the dimensions shown are subject to minor variations, intended for guidance only and not intended to be used for carpet sizes, appliance sizes or items of furniture. Rooms are approximate and no responsibility is taken for any error, omission or mis-statement.  
Please check with the Sales and Marketing team.*





141 HAVANT ROAD,  
DRAYTON,  
HAMPSHIRE,  
PO6 2AA

TEL: 02393 277 277

FOR MORE INFORMATION REGISTER  
YOUR INTEREST AT;

[www.solentviewapartments.co.uk](http://www.solentviewapartments.co.uk)



St Helens Parade, Southsea, Portsmouth,  
PO4 0RN



