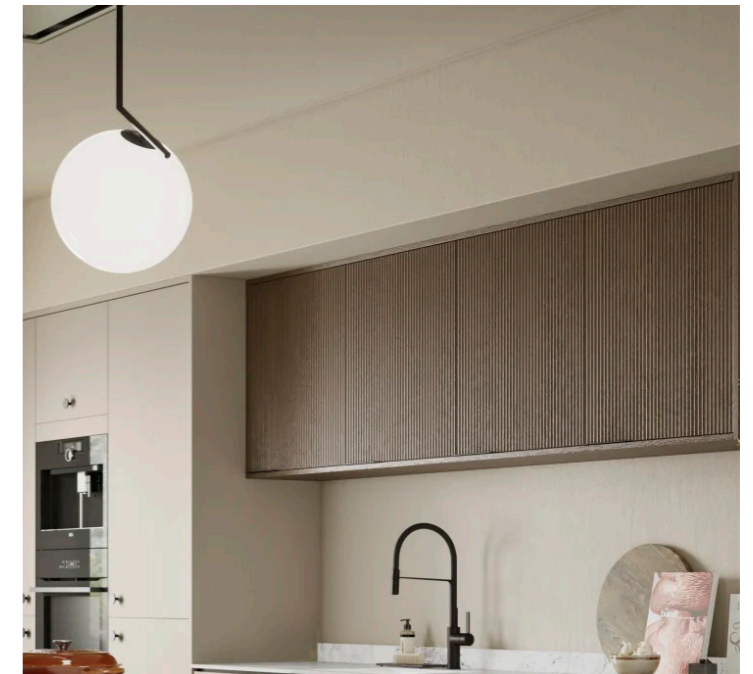




KITCHEN DESIGN TYPE 1 & 2

SPECIFICATION: MAGNET HOXTON  
COLOUR: PEBBLE / NORDIC WAVE  
COUNTER TOP: CALACATTA GOLD QUARTZ  
BACKSPLASH: CALACATTA GOLD QUARTZ  
IRONMONGERY: AGED BRASS  
SANITARYWARE: AGED BRASS / WHITE CERAMIC  
APPLIANCES: NEFF THROUGHOUT



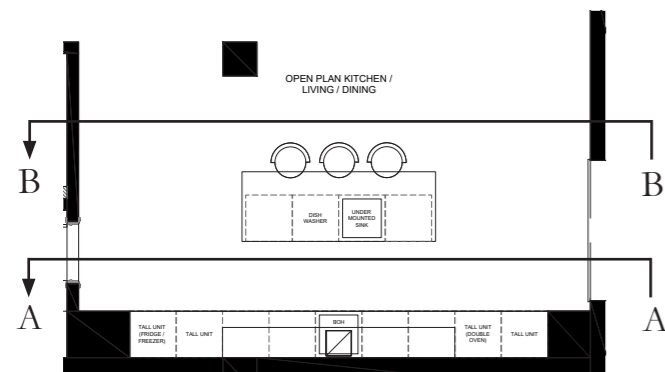
### KITCHEN DESIGN TYPE 1

SPECIFICATION: MAGNET HOXTON  
COLOUR: PEBBLE / NORDIC WAVE  
COUNTER TOP: CALACATTA GOLD QUARTZ  
BACKSPLASH: CALACATTA GOLD QUARTZ  
IRONMONGERY: AGED BRASS  
SANITARYWARE: AGED BRASS / WHITE CERAMIC  
APPLIANCES: NEFF THROUGHOUT



ELEVATION A

ELEVATION B



### LOCATIONS

TO BE IMPLEMENTED IN THE  
FOLLOWING FLATS;  
NUMBER 1 & NUMBER 2



KITCHEN ISLAND BACK



KITCHEN ISLAND SIDES

KITCHEN DESIGN TYPE 2

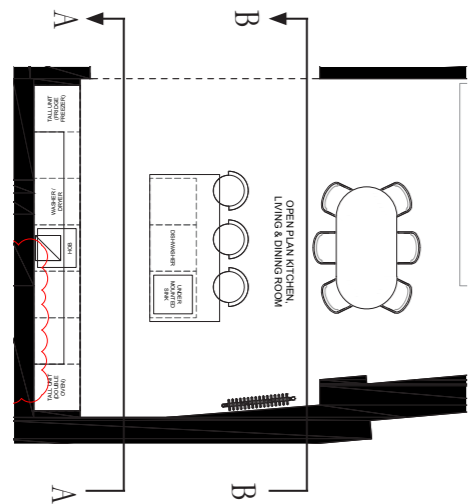
SPECIFICATION: MAGNET HOXTON  
COLOUR: PEBBLE / NORDIC WAVE  
COUNTER TOP: CALACATTA GOLD QUARTZ  
BACKSPLASH: CALACATTA GOLD QUARTZ  
IRONMONGERY: AGED BRASS  
SANITARYWARE: AGED BRASS / WHITE CERAMIC  
APPLIANCES: NEFF THROUGHOUT



ELEVATION A



ELEVATION B



LOCATIONS

TO BE IMPLEMENTED IN THE  
FOLLOWING FLATS;  
7,8,12,13,17,18,22,23,27,28 & 29



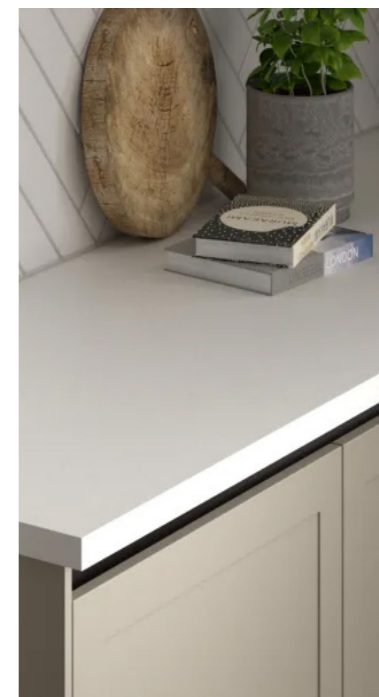
KITCHEN ISLAND BACK



KITCHEN ISLAND SIDES

KITCHEN DESIGN TYPE 3 & 4

SPECIFICATION: MAGNET LUNA  
COLOUR: PEBBLE MATT  
COUNTER TOP: MINERVA WHITE  
BACKSPLASH: CLAYBROOK KATAKANA LARGE MATT TILES  
IRONMONGERY: N/A  
SANITARYWARE: CHROME  
APPLIANCES: NEFF THROUGHOUT



KITCHEN DESIGN TYPE 3

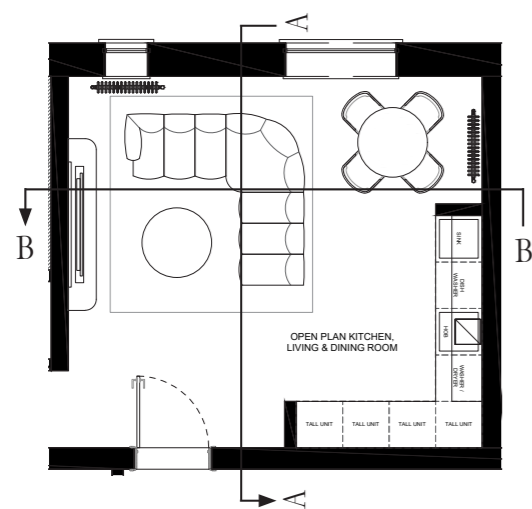
SPECIFICATION: MAGNET LUNA  
COLOUR: PEBBLE MATT  
COUNTER TOP: MINERVA WHITE  
BACKSPLASH: CLAYBROOK KATAKANA LARGE MATT TILES  
IRONMONGERY: N/A  
SANITARYWARE: CHROME  
APPLIANCES: NEFF THROUGHOUT



ELEVATION A



ELEVATION B



LOCATIONS

TO BE IMPLEMENTED IN THE  
FOLLOWING FLATS;  
3,4,5,9,10,14,15,19,20, 24 & 25

### KITCHEN DESIGN TYPE 4

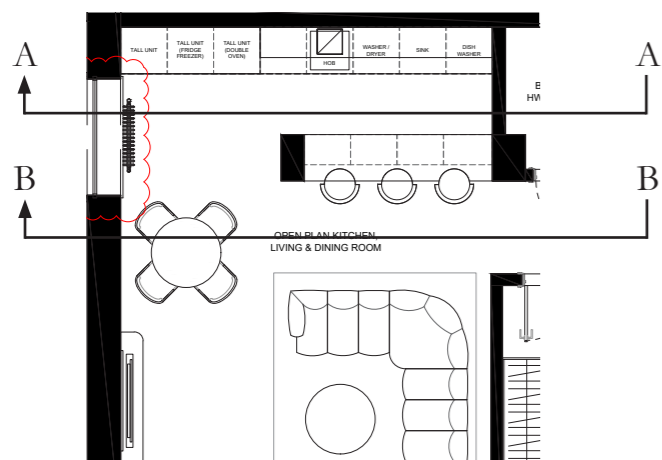
SPECIFICATION: MAGNET LUNA  
COLOUR: PEBBLE MATT  
COUNTER TOP: MINERVA WHITE  
BACKSPLASH: CLAYBROOK KATAKANA LARGE MATT TILES  
IRONMONGERY: N/A  
SANITARYWARE: CHROME  
APPLIANCES: NEFF THROUGHOUT



ELEVATION A



ELEVATION B



### LOCATIONS

TO BE IMPLEMENTED IN THE  
FOLLOWING FLATS;  
6, 11, 16, 21 & 26 (FLAT 6 TO BE  
ADJUSTED FOLLOWING SITE SURVEY)