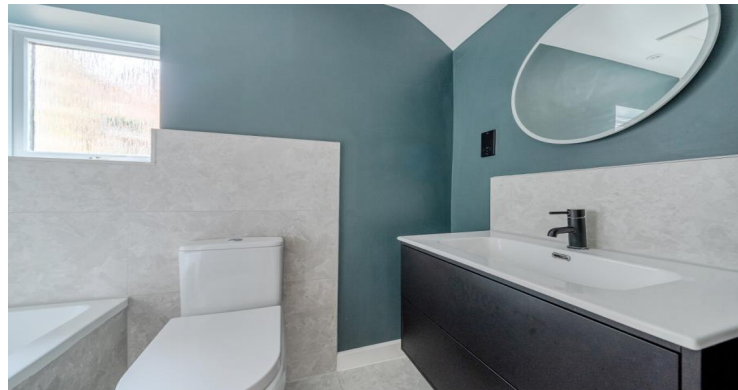




Englefield Green

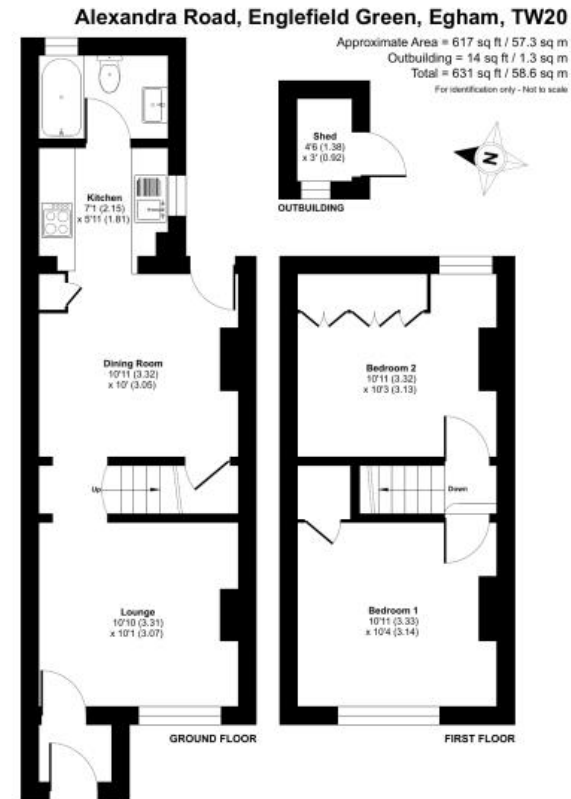
£1,650 Per calendar month

BUCKINGHAMSHIRE



A charming two bedroom house situated in popular Englefield Green. Pretty rear garden with patio and small shed. On-street parking. Unfurnished. Council Tax Band D. Gas Central Heatnig. EPC:C69.

Fees for tenants: Holding fee equivalent to one weeks rent, amendments to Tenancy Agreement after the document has been signed £50, change of sharer £50, stamp duty land tax (if total rent exceeds £125,000), 3% above the base rate of Bank of England per annum (calculated daily) for late/unpaid/returned rent payments, lost/damaged/broken keys/fobs or security devices at cost, deposit of five weeks rent if annual rent is less than £50,000 or six weeks rent if annual rent is £50,000 or more, all including VAT.



Floor plan produced in accordance with RICS Property Measurement 2nd Edition, incorporating International Property Measurement Standards (IPMS Residential). Produced for Buckingham's. REF: 1387073. © midwinter 2020

6 Station Approach Virginia Water Surrey GU25 4DL
 01344 845050
www.buckinghamshams.com
lettings@buckinghamshams.com



BUCKINGHAMSHAMS