



Wentworth Estate, Virginia Water

£7,500 Per calendar month

BUCKINGHAM

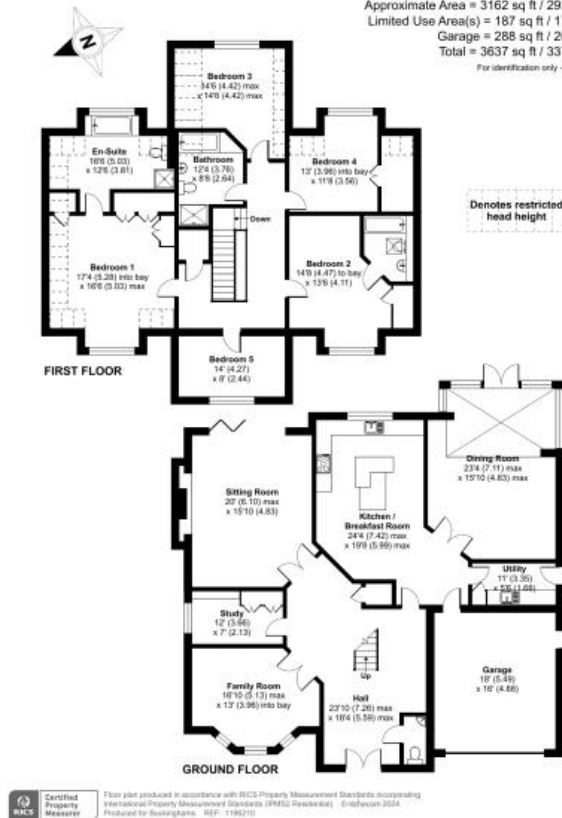


**A beautifully presented five bedroom detached house with gated driveway situated in the highly sought after Wentworth Estate, Virginia Water. Air-conditioning to the office, second living room, garage and three bedrooms. Unfurnished. Council Tax Band H. EPC:C75.**

Fees for tenants: Holding fee equivalent to one weeks rent, amendments to Tenancy Agreement after the document has been signed £50, change of sharer £50, stamp duty land tax (if total rent exceeds £125,000), 3% above the base rate of Bank of England per annum (calculated daily) for late/unpaid/returned rent payments, lost/damaged/broken keys/fobs or security devices at cost, deposit of five weeks rent if annual rent is less than £50,000 or six weeks rent if annual rent is £50,000 or more, all including VAT.

### Heath Rise, Virginia Water, GU25

Approximate Area = 3162 sq ft / 293.7 sq m  
 Limited Use Area(s) = 187 sq ft / 17.4 sq m  
 Garage = 288 sq ft / 26.7 sq m  
 Total = 3637 sq ft / 337.9 sq m  
 For identification only - Not to scale



6 Station Approach Virginia Water Surrey GU25 4DL  
 01344 845050  
 www.buckinghamams.com  
 lettings@buckinghamams.com



**BUCKINGHAMMS**