



Englefield Green, Surrey

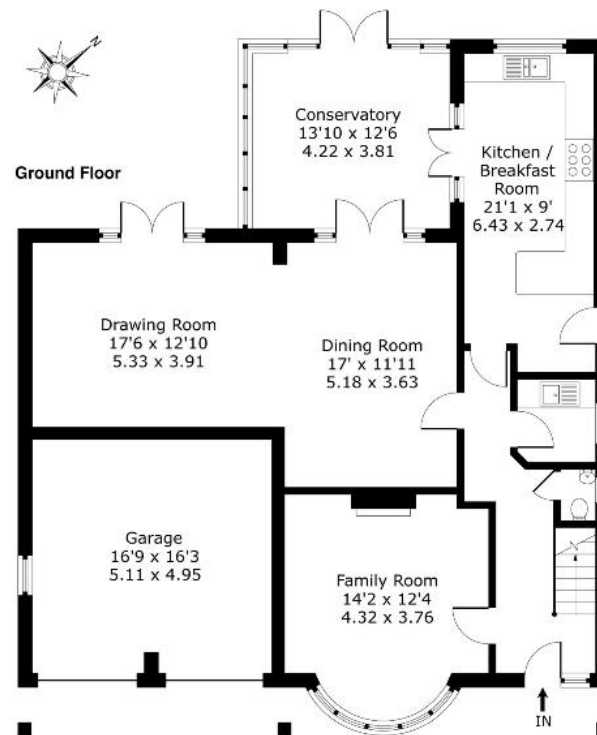
£3,750 Per calendar month

BUCKINGHAMS



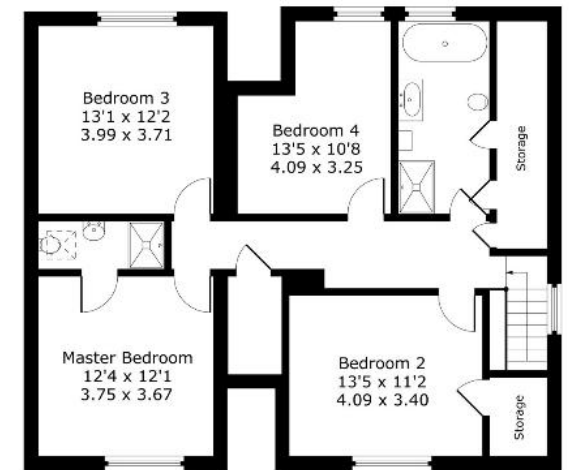
**A handsome four bedroom detached house situated in a secluded cul de sac in Englefield Green. Excellent access to ACS Egham and Egham train station. Double garage and a large, pretty rear garden. Unfurnished. Council Tax Band F. EPC:E47.**

Fees for tenants: Holding fee equivalent to one weeks rent, amendments to Tenancy Agreement after the document has been signed £50, change of sharer £50, stamp duty land tax (if total rent exceeds £125,000), 3% above the base rate of Bank of England per annum (calculated daily) for late/unpaid/returned rent payments, lost/damaged/broken keys/fobs or security devices at cost, deposit of five weeks rent if annual rent is less than £50,000 or six weeks rent if annual rent is £50,000 or more, all including VAT.



**Approximate Gross Internal Floor Area :**  
 Ground Floor 140 sq m / 1508 sq ft  
 First Floor 94 sq m / 1010 sq ft  
**Total 234 sq m / 2518 sq ft**

**First Floor**



6 Station Approach Virginia Water Surrey GU25 4DL  
 01344 845050  
[www.buckingham.com](http://www.buckingham.com)  
[lettings@buckingham.com](mailto:lettings@buckingham.com)



**BUCKINGHAMS**