



# TMS

## ESTATE AGENTS



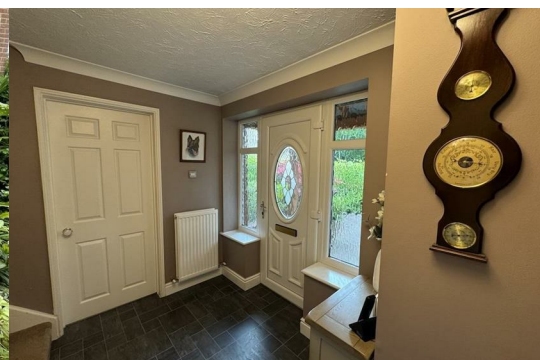
### NELSON CLOSE, RH10 7GH

**Offers In Excess Of £795,000**



We are pleased to offer for sale this stunning 4 bedroom detached house at the end of a quiet cul-de-sac in Maidenbower. Highlights include an award-winning kitchen, a large underfloor-heated conservatory (with tiled roof and sky lights) and views across the South-facing garden. One of the largest plots in the development.

Accommodation is spread across 2 floors and comprises:



## Ground Floor

- \* Entrance Hall
- \* Downstairs Cloakroom
- \* Office: 2.78m x 2.18m (9' 1" x 7' 2")
- \* Living Room: 5.93m x 3.63m (19' 5" x 11' 11")
- \* Kitchen / Dining Room: 6.28m x 4.36m (20' 7" x 14' 4")
- \* Utility: 1.84m x 1.82m (6' x 6')
- \* Conservatory: 6.7m x 4.29m (max) (22' x 14' 1")

## FIRST FLOOR

- \* Landing
- \* Family Bathroom
- \* Bedroom 1: 4.14m x 3.26m (13' 7" x 10' 8")
- \* En-Suite Shower Room
- \* Bedroom 2: 3.92m x 3.26m (12' 10" x 10' 8")
- \* Bedroom 3: 2.97m x 2.67m (9' 9" x 8' 9")
- \* Bedroom 4: 2.74m x 2.04m (9' x 6' 8")

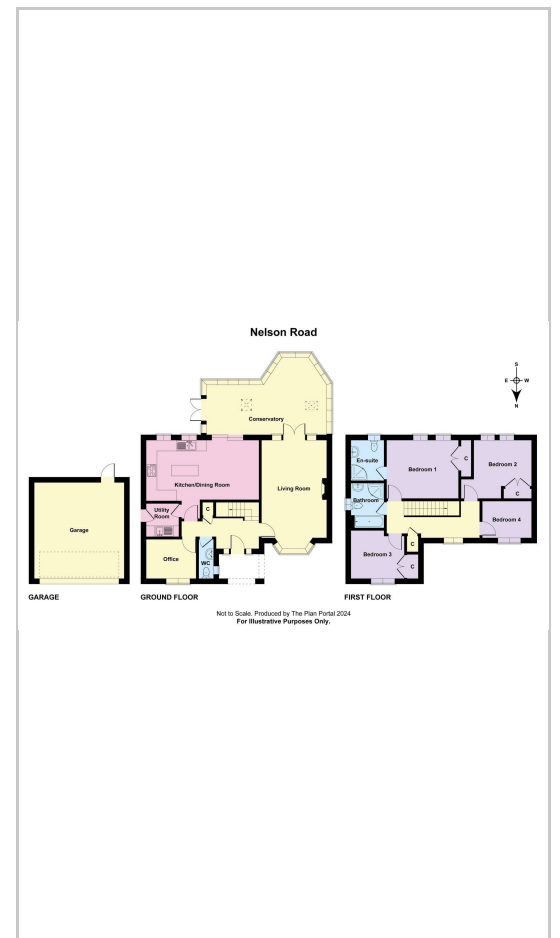
## OUTSIDE

- \* Detached Garage: 5.34m x 5.01m (17' 6" x 16' 5")
- \* Driveway
- \* Front Garden
- \* South-Facing Rear Garden

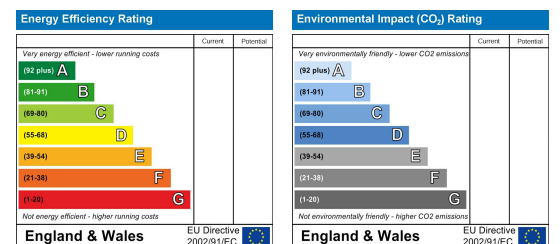
## Area Map



## Floor Plans



## Energy Efficiency Graph



These particulars, whilst believed to be accurate are set out as a general outline only for guidance and do not constitute any part of an offer or contract. Intending purchasers should not rely on them as statements of representation of fact, but must satisfy themselves by inspection or otherwise as to their accuracy. No person in this firm's employment has the authority to make or give any representation or warranty in respect of the property.