



TMS

ESTATE AGENTS



20 Albion Place

£995 Per Month



• 1 BEDROOM 3rd FLOOR APARTMENT

• LUXURY APARTMENT

• HIGH SPEED LINKS TO LONDON ST PANCRAS

• GRADE II LISTED BUILDING WITH CONTEMPORARY LIVING

• PARKING OPTION AVAILABLE

• STUNNING VIEWS OVER RAMSGATE'S ROYAL HARBOUR

• LONG TERM LET / UNFURNISHED

• INTEGRATED WHITE GOODS

• EPC - C / COUNCIL TAX - TBC



STUNNING NEW DEVELOPMENT ~ 1 BEDROOM 3RD FLOOR
APARTMENT ~ VIEWS OVER THE ROYAL HARBOUR ~ AVAILABLE
MAY 2025 ~ 1ST MONTHS RENT FREE !!

TMS ESTATE AGENTS are delighted to offer to the market this stunning 1 bedroom 3rd floor apartment set in this impressive, redeveloped Grade II listed building in Albion Place., Ramsgate.

This spacious and sophisticated apartment mixes Georgian charm with modern living and is finished to a high level with panoramic views over Ramsgate's Royal harbour.

The apartment enjoys a contemporary open plan living area with a bespoke kitchen diner including fully integrated appliances, the room is bright and spacious and offers stunning views over Ramsgate's Royal Harbour. There is a double bedroom and stylish shower room.

Perfect for working professional tenants who wish to enjoy the luxury of an apartment with stunning views, but have the flexibility to commute to London if they need to via the high speed links from Ramsgate Mainline Station close by.

An allocated parking space can be available at a premium of an additional £75pcm

The apartment is unfurnished and available for a long term let, unfortunately under the terms of the lease pets are not permitted.

Council Tax band TBC / EPC - D / The deposit is 5 weeks rent
£1148.07 / holding deposit £229.61

<https://checker.ofcom.org/> for broadband and phone coverage.

APPLICANTS WILL BE REQUIRED TO SHOW A MINIMUM TOTAL INCOME OF £29,850 PER ANNUM FOR AFFORDABILITY FOR THIS RENT.

Call TMS Estate Agents now. Available 7 days a week

COMMUNAL ENTRANCE

ENTRANCE HALL

LOUNGE / KITCHEN

BEDROOM

BATHROOM

AGENTS NOTE

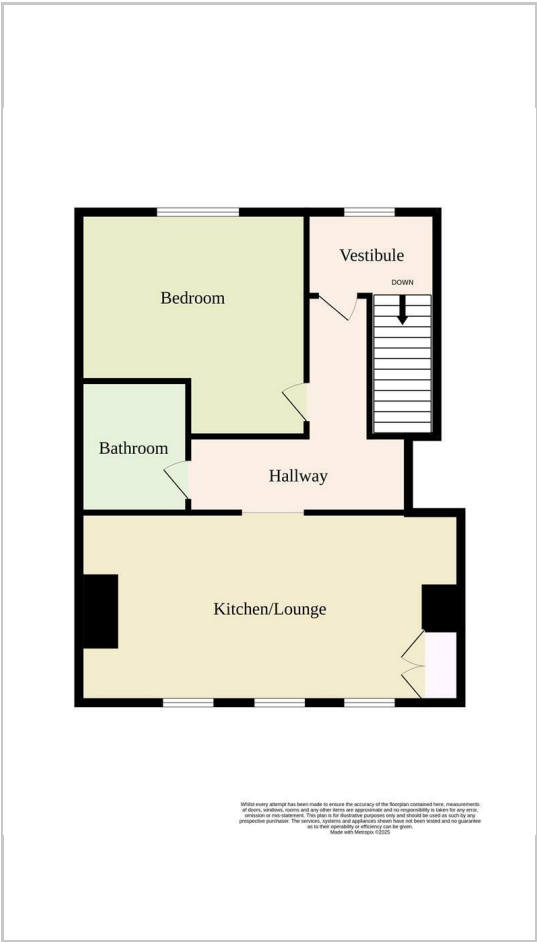
Every apartment at Albion Place is unique. All images and virtual tours are for illustration purposes only.

APARTMENT

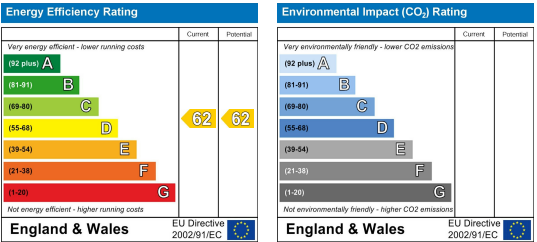
Area Map



Floor Plans



Energy Efficiency Graph



These particulars, whilst believed to be accurate are set out as a general outline only for guidance and do not constitute any part of an offer or contract. Intending purchasers should not rely on them as statements of representation of fact, but must satisfy themselves by inspection or otherwise as to their accuracy. No person in this firms employment has the authority to make or give any representation or warranty in respect of the property.