



Laurel Bank Brookhill Road
Cophthorne, Crawley, RH10 3PJ

Offers In The Region Of £700,000



Laurel Bank Brookhill Road

Copthorne, Crawley, RH10 3PJ

TMS are pleased to offer for sale this 4 bedroom detached chalet bungalow in Copthorne village. Recently decorated (2024), new nest heating, etc.

Accommodation is spread across 2 floors and comprises:

Porch

Hallway

Bathroom

Lounge
16'6" x 17'4" (5.03 x 5.29)

Dining Room
12'2" x 11'4" (3.71 x 3.47)

Kitchen/ Breakfast Room
19'3" x 12'9" (5.87 x 3.91)

Garage
35'0" x 10'2" (10.67 x 3.12)

Bedroom One
12'1" x 11'5" (3.7 x 3.49)

Bedroom Two
12'1" x 11'11" (3.7 x 3.64)

First Floor

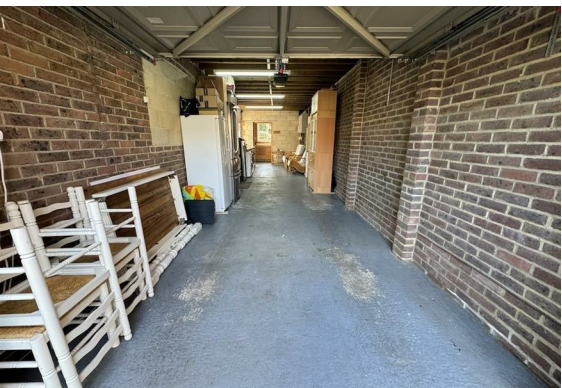
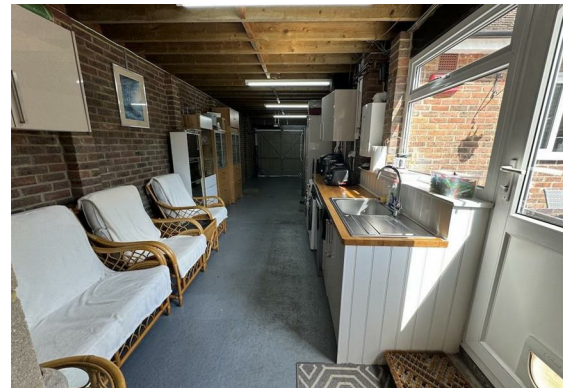
Landing

Bedroom Three
14'9" x 8'7" (4.51 x 2.64)

Bedroom Four
13'1" x 8'1" (4.0 x 2.48)

Shower Room
12'9" x 5'3" (max) (3.89 x 1.61 (max))





Exterior
Large Driveway
Front Garden
Rear Garden

Floor Plan



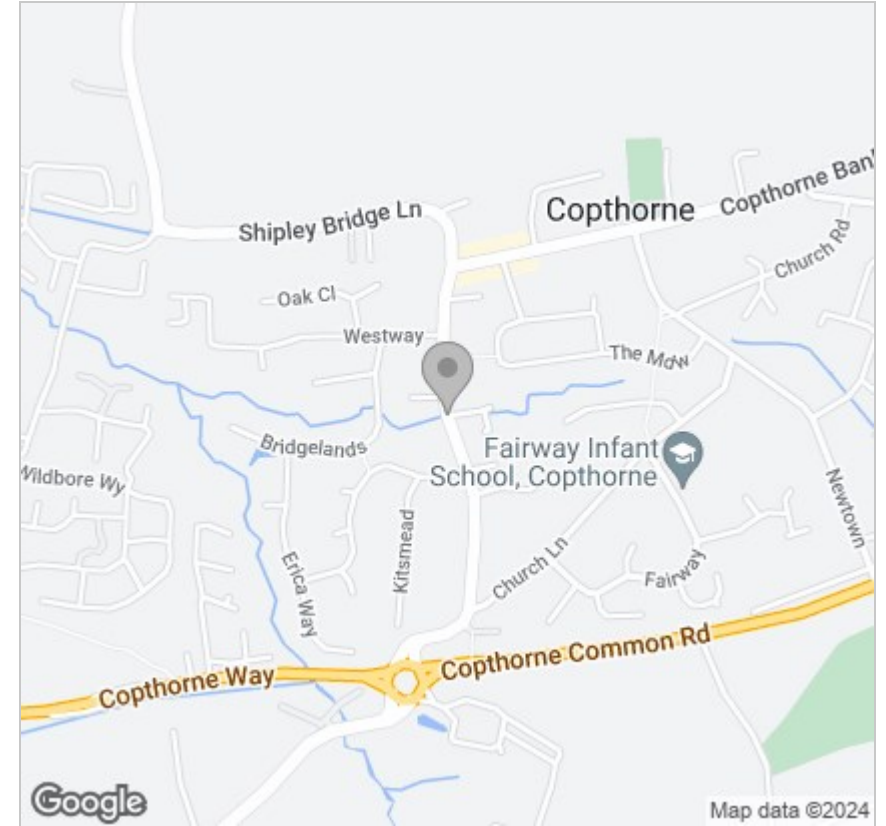
Viewing

Please contact our TMS ESTATE AGENTS Office on 01843 866055 if you wish to arrange a viewing appointment for this property or require further information.

These particulars, whilst believed to be accurate are set out as a general outline only for guidance and do not constitute any part of an offer or contract. Intending purchasers should not rely on them as statements of representation of fact, but must satisfy themselves by inspection or otherwise as to their accuracy. No person in this firms employment has the authority to make or give any representation or warranty in respect of the property.

Kent Innovation Centre Millennium Way, Broadstairs, Kent, CT10 2QQ
t 01843 866055 e info@tmsestateagents.com www.tmsestateagents.com

Area Map



Energy Efficiency Graph

