



Rydal Avenue, Ramsgate, CT11 0PY
Offers In The Region Of £375,000



A family home eagerly awaiting its new occupants!

If you're on the hunt for more space to accommodate your growing family, your search ends here. We have just the property for you!

This charming home boasts an inviting exterior with kerb appeal, ample off-street parking, and a garage - and that's just the beginning! Stepping inside, you're greeted by a good sized hallway leading to a comfortable lounge/diner. Continuing on, you'll discover a generously-sized kitchen/diner, offering delightful views of the rear garden, along with the convenience of a much-needed WC.

Venture upstairs to find FIVE bedrooms, comprising four doubles and one single. The main bedroom benefits from fitted wardrobes for added convenience. Completing the upper level is a family bathroom featuring a walk-in shower, toilet, and basin. While the property could benefit from some modernisation, it undoubtedly holds the potential to become a truly stunning home.

Outside, a sizable garden awaits, featuring a lush lawn, inviting patio area, and neatly bordered edges finished with pebbles - the perfect setting to bask in the warmth of summer.

Nestled within the esteemed Rydal Avenue, the property is in a well-established residential area renowned for its strong sense of community spirit. Here, neighbours are more than just faces; they're friends. Conveniently located amenities include a Tesco superstore just over half a mile away, and a mainline railway station offering swift services to London, reachable in an approximate five-minute drive.

Furthermore, its proximity to Ellington Park - recipient of the 2022/23 Green Heritage Site Accreditation and Green Flag Award - adds to its allure. Whether you're a family seeking recreation, a dog lover in need of walking trails, or simply someone looking to unwind with a leisurely picnic, this park has something for everyone.

So, why delay? Contact TMS Estate Agents today and secure your viewing appointment. Your new family home awaits!





GROUND FLOOR

LOUNGE

13'3" x 11'5" (4.04 x 3.50)

DINING AREA

11'0" x 9'2" (3.37 x 2.81)

KITCHEN/DINER

16'5" x 12'0" (5.02 x 3.67)

W/C

3'11" x 3'10" (1.20 x 1.19)

FIRST FLOOR

MAIN BEDROOM

12'0" x 11'2" (3.67 x 3.41)

BEDROOM TWO

11'1" x 9'6" (3.38 x 2.90)

BEDROOM THREE

11'5" x 7'8" (3.48 x 2.34)

BEDROOM FOUR

9'2" x 7'8" (2.80 x 2.34)

BEDROOM FIVE

8'3" x 6'11" (2.52 x 2.13)

SHOWER ROOM

7'11" x 5'5" (2.42 x 1.66)

EXTERNAL

GARAGE

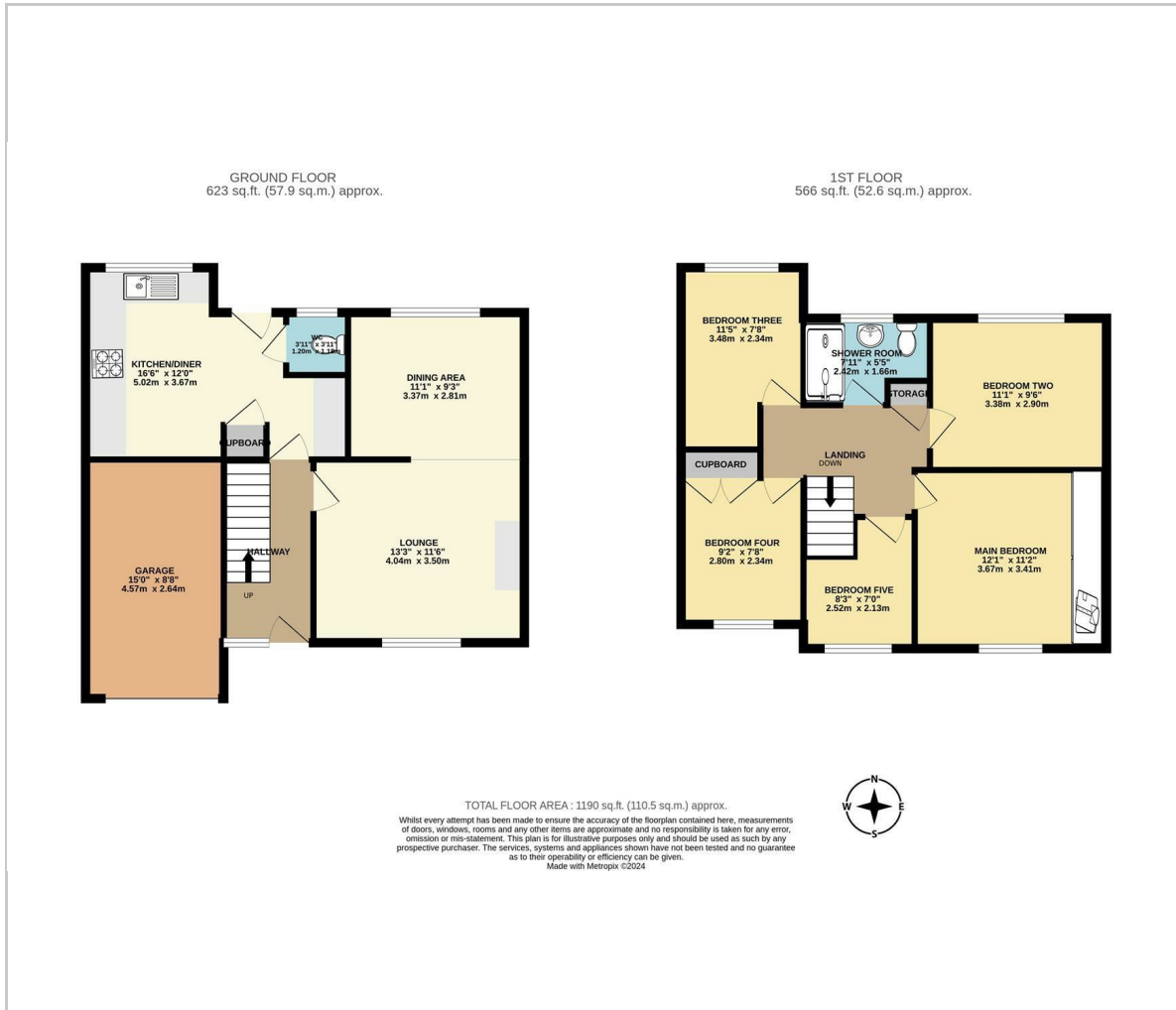
14'11" x 8'7" (4.57 x 2.64)



TMS

ESTATE AGENTS

Floor Plan



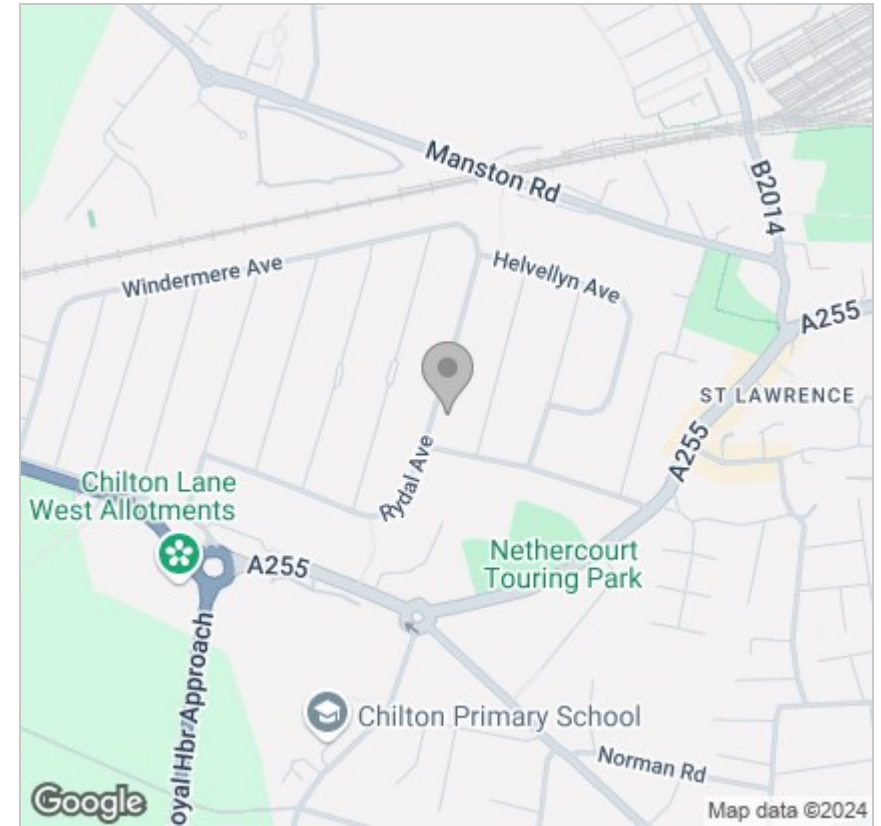
Viewing

Please contact our TMS ESTATE AGENTS Office on 01843 866055 if you wish to arrange a viewing appointment for this property or require further information.

These particulars, whilst believed to be accurate are set out as a general outline only for guidance and do not constitute any part of an offer or contract. Intending purchasers should not rely on them as statements of representation of fact, but must satisfy themselves by inspection or otherwise as to their accuracy. No person in this firm's employment has the authority to make or give any representation or warranty in respect of the property.

Kent Innovation Centre Millennium Way, Broadstairs, Kent, CT10 2QQ
t 01843 866055 e info@tmsestateagents.com www.tmsestateagents.com

Area Map



Energy Efficiency Graph

