



Marlborough Road, Ramsgate, CT11 9BU

Offers In The Region Of £400,000



Nestled proudly on Marlborough Road in the charming town of Ramsgate, this Victorian gem exudes an irresistible allure, boasting an abundance of charm and character

Prepare to be enchanted as you step through the doors of this magnificent four-story abode. The ground floor offers a spacious lounge with elegant bay windows that flood the space with natural light. Adjacent, a dining room beckons for memorable gatherings, while a convenient WC adds a touch of practicality. In the basement lies the heart of the home, a captivating kitchen leading to a cosy breakfast room, illuminated by a skylight. Venture further, and you'll discover bedroom 5, a versatile space perfect for adapting to your family's evolving needs.

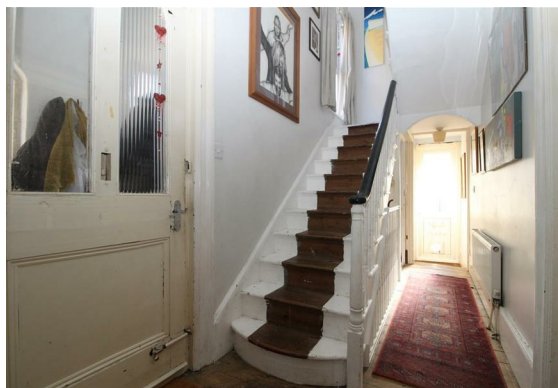
Ascending to the first floor, the main bedroom awaits, alongside a generously proportioned second bedroom. The main bathroom is on this level, which is designed to cater to the needs of any bustling household. Ascend once more to the third floor, where two additional bedrooms await. The property boasts lofty ceilings and expansive windows, waiting for your creative touch to make it uniquely yours.

Outside, a good sized garden, offers a retreat from the hustle and bustle of daily life.

But the allure of this home extends beyond its walls, as Ramsgate itself beckons with its vibrant atmosphere and coastal charm. Just a leisurely stroll away lies the UK's only Royal Harbour, a haven for culinary delights and seaside adventures. Nearby Main Sands beach offers endless hours of sun-soaked relaxation, while outstanding schools cater to families seeking educational excellence.

It's no wonder Ramsgate has seen a surge in popularity in recent years and with a property as enchanting as this, it is simply irresistible.

Don't miss your chance to experience the magic of this Victorian masterpiece. Contact us today to arrange your personal viewing with a member of the dedicated TMS team. We're available 7 days a week!





BASEMENT

Kitchen
15'2" x 13'1" (4.64 x 4.00)

Bedroom Five/Dining Room
15'2" x 16'6" (4.64 x 5.03)

Breakfast Room
9'8" x 7'6" (2.97 x 2.29)

Shower Room
3'8" x 5'4" (1.14 x 1.64)

GROUND FLOOR

Dining Room
10'6" x 14'1" (3.22 x 4.30)

Lounge
16'4" x 16'11" (4.99 x 5.17)



FIRST FLOOR

Main Bedroom
16'4" x 14'2" (4.99 x 4.33)

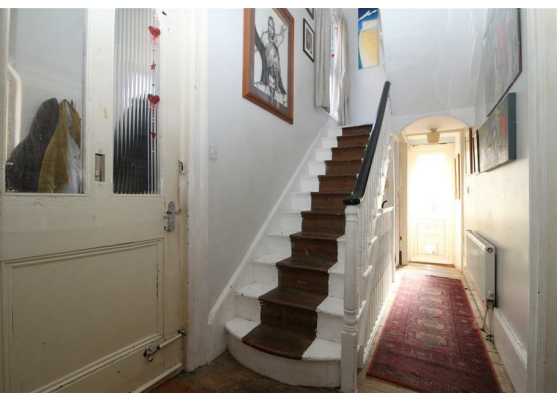
Bedroom Two
10'6" x 14'1" (3.21 x 4.30)

Bathroom
6'2" x 6'4" (1.88 x 1.94)

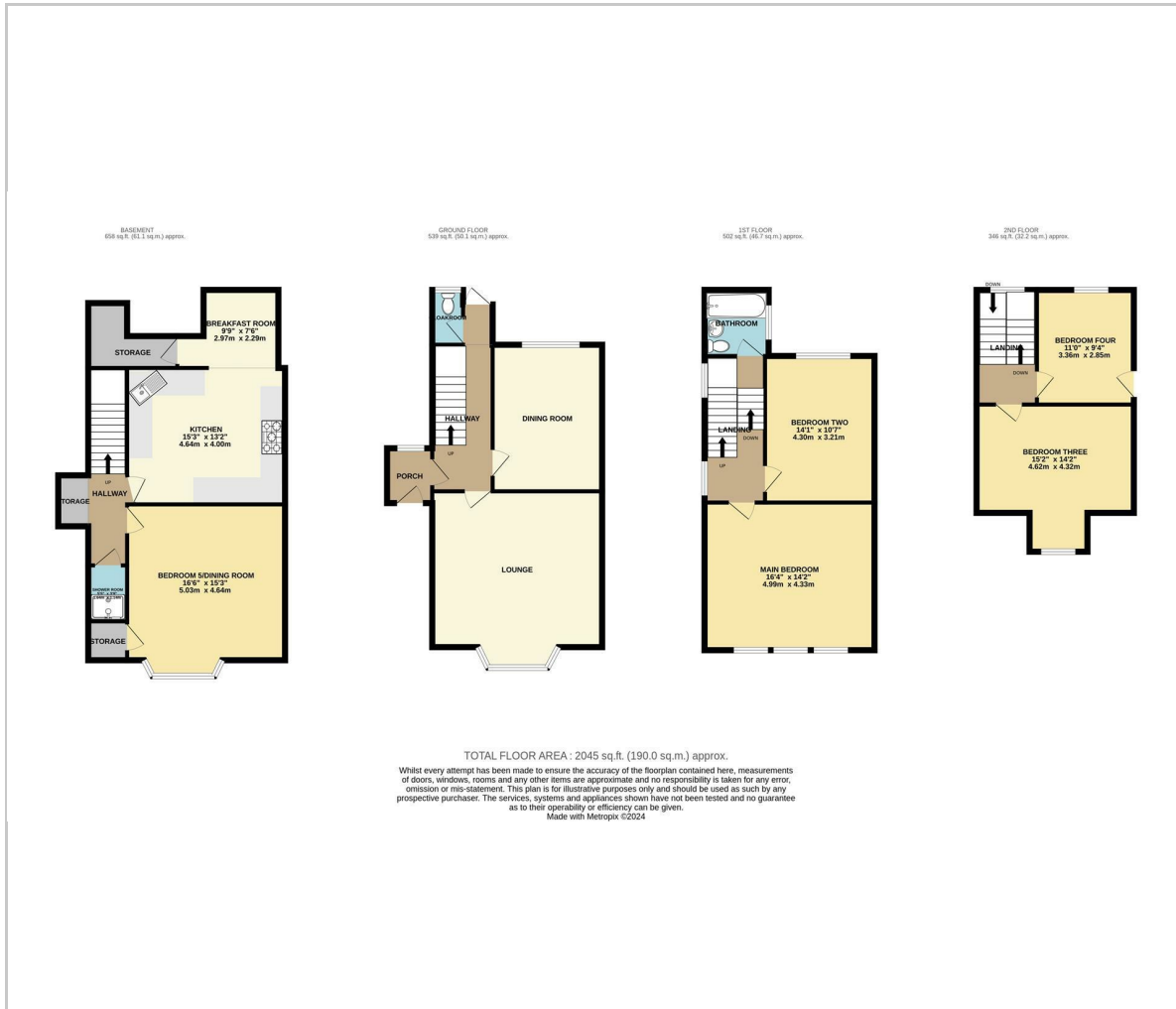
SECOND FLOOR

Bedroom Three
15'1" x 14'2" (4.62 x 4.32)

Bedroom Four
9'4" x 11'0" (2.85 x 3.36)



Floor Plan



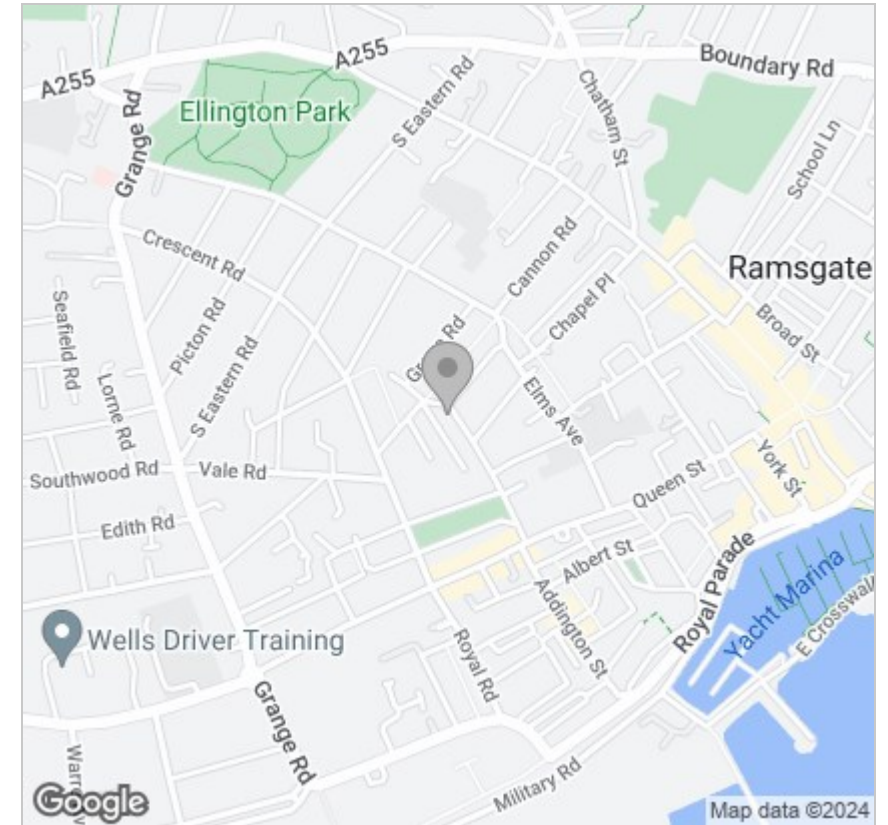
Viewing

Please contact our TMS ESTATE AGENTS Office on 01843 866055 if you wish to arrange a viewing appointment for this property or require further information.

These particulars, whilst believed to be accurate are set out as a general outline only for guidance and do not constitute any part of an offer or contract. Intending purchasers should not rely on them as statements of representation of fact, but must satisfy themselves by inspection or otherwise as to their accuracy. No person in this firms employment has the authority to make or give any representation or warranty in respect of the property.

Kent Innovation Centre Millennium Way, Broadstairs, Kent, CT10 2QQ
t 01843 866055 e info@tmsestateagents.com www.tmsestateagents.com

Area Map



Energy Efficiency Graph

