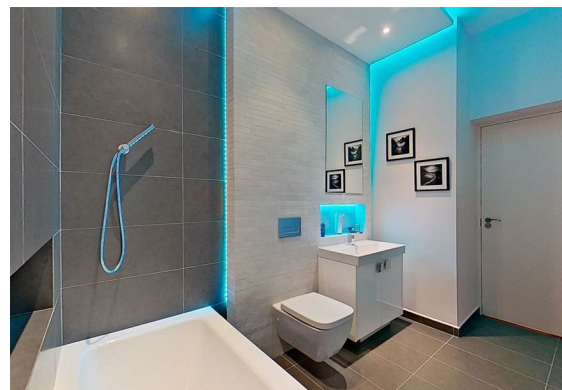




**Bevan Mansions, North Foreland
Offers In The Region Of £575,000**

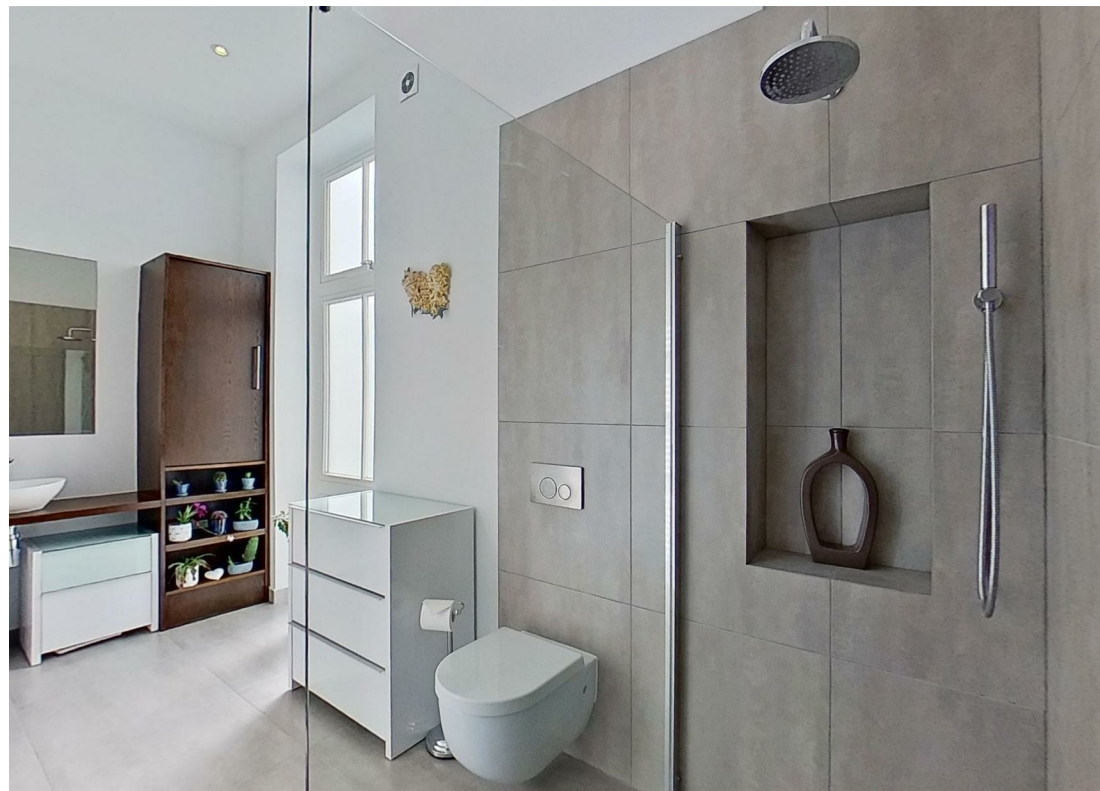


A prestigious, period property in an enviable location! This stunning two bedroom, ground floor apartment with a share of the freehold, is the epitome of elegance and luxury. Bevan Mansions is a secure and exclusive, gated residence. A magnificent former stately home, this lovely apartment has its own front door. Discerning purchasers will appreciate the quality of the refurbishment and high standard of the redecoration this handsome home now offers. The kitchen and bathrooms have been fitted with bespoke units, with exceptional attention to detail. The high ceilings and grand style give a sense of space and serenity. A low maintenance, pristine property, ready to move into with a contemporary, open plan living/kitchen/dining area, utility room, two bedrooms, ensuite to the main bedroom and family bathroom. Another attractive feature is the private garden and patio area which we understand is maintained at the cost of the communal service charge. There is a further one acre of land to enjoy with sea breezes from the English Channel. The commanding coastal position of this impressive home situated on North Foreland Road is a sought after area, less than a five minute stroll to the beautiful sandy beach at Stone Bay. The property also benefits from allocated parking accessed via video security gates. Less than a mile away, charming Broadstairs offers a high street full of independent shops, restaurants & cafes, not to mention a further sandy beach at Viking Bay. Broadstairs train station provides fast services to London. Whether you choose to make this your permanent residence or your sanctuary by the sea, you will always feel on holiday with the option to walk or cycle along the 32 mile Viking Coastal Trail, enjoying the dramatic, ever changing scenery. For anyone with a passion for golf, North Foreland Golf club, one of the most popular seaside golf courses in the country is just a 5 minute drive away. Call now to arrange your escorted viewing 7 days a week.





- SUMPTUOUS TWO BEDROOM GROUND FLOOR APARTMENT
- BEAUTIFULLY MAINTAINED GARDENS
- ALLOCATED PARKING BAY
- PRIVATE GARDEN AND PATIO
- SECURE DEVELOPMENT
- CLOSE TO STONE BAY
- UNDER A MILE TO BROADSTAIRS TOWN CENTRE AND MAINLINE TRAIN STATION
- ENVIABLE LOCATION
- PERFECT MAIN RESIDENCE/HOLIDAY HOME
- COUNCIL TAX BAND E



Entrance Hall
12'3" x 16'8" (3.74 x 5.09)

Kitchen/Sitting/Dinning
24'7" x 15'2" (7.50 x 4.64)

Utility Room
7'2" x 5'2" (2.20 x 1.60)

Main Bedroom
13'10" x 12'5" (4.23 x 3.80)

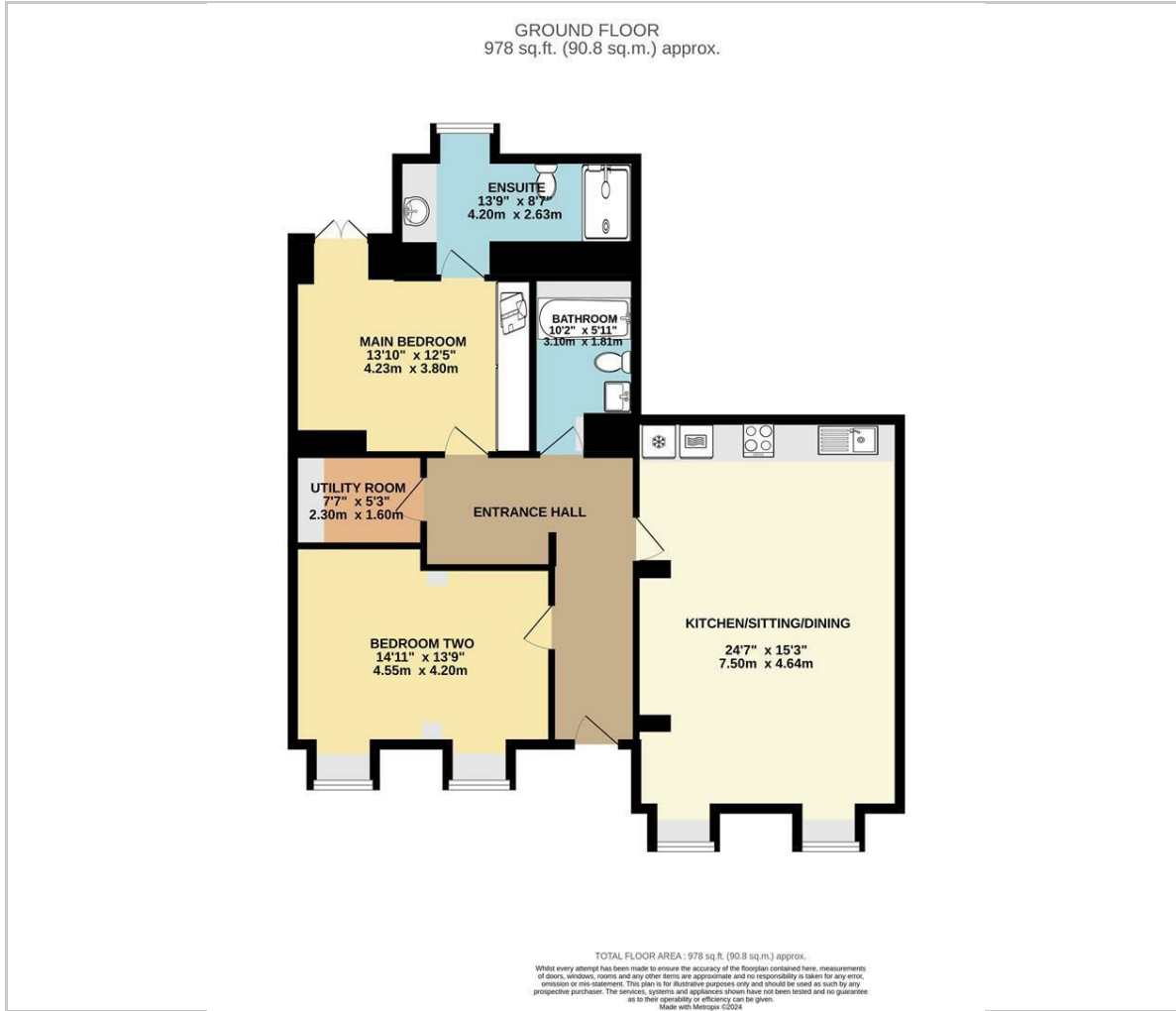
Ensuite
13'9" x 8'7" (4.20 x 2.63)

Bedroom Two
14'9" x 13'9" (4.5 x 4.2)

Bathroom
10'2" x 5'10" (3.1 x 1.80)



Floor Plan



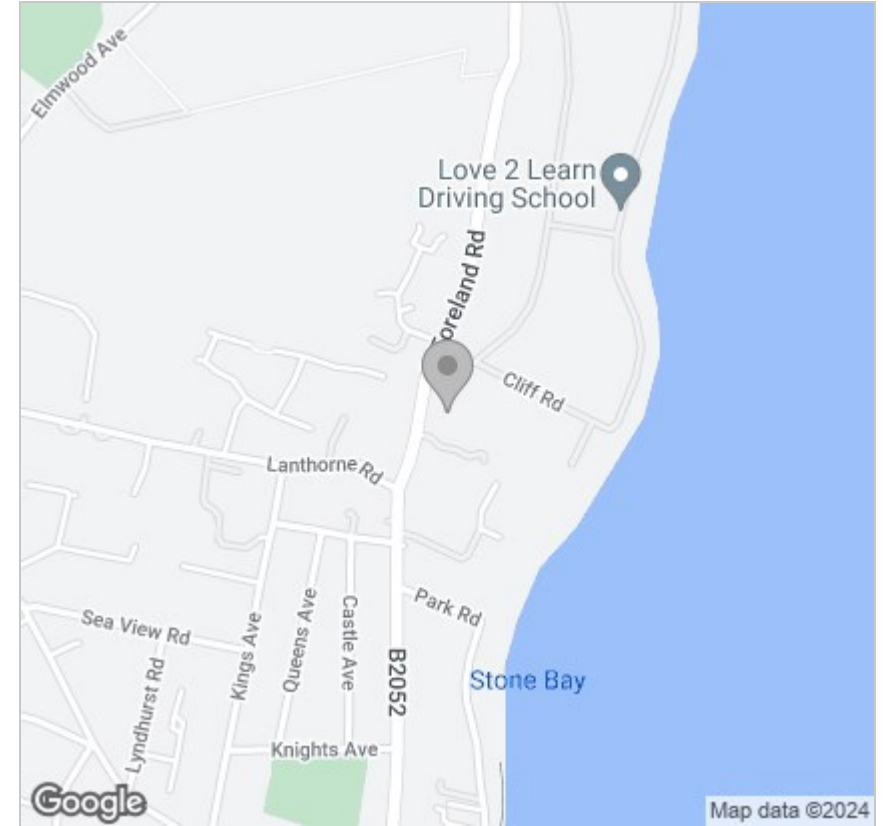
Viewing

Please contact our TMS ESTATE AGENTS Office on 01843 866055 if you wish to arrange a viewing appointment for this property or require further information.

These particulars, whilst believed to be accurate are set out as a general outline only for guidance and do not constitute any part of an offer or contract. Intending purchasers should not rely on them as statements of representation of fact, but must satisfy themselves by inspection or otherwise as to their accuracy. No person in this firm's employment has the authority to make or give any representation or warranty in respect of the property.

Kent Innovation Centre Millennium Way, Broadstairs, Kent, CT10 2QQ
t 01843 866055 e info@tmsestateagents.com www.tmsestateagents.com

Area Map



Energy Efficiency Graph

