



High Street
King's Lynn

SOWERBYS

Nestled in the heart of King's Lynn, this beautifully renovated two-bedroom apartment offers the perfect blend of modern comfort and town living.

Boasting generous living space and picturesque views overlooking the iconic Minster, this is town centre living at its finest.

Step inside to discover a thoughtfully designed interior, featuring a brand-new fitted kitchen ideal for both entertaining and everyday life. The apartment's spacious layout allows for flexible living, with two well-proportioned bedrooms and a bright, welcoming living area that captures the charm of the surrounding historic architecture.

Whether you're enjoying morning coffee with Minster views or exploring the vibrant local shops and cafes just moments from your doorstep, this property offers a unique lifestyle opportunity for professionals or those seeking convenient living in one of Norfolk's most characterful towns.

KING'S LYNN

Perched on the banks of the River Ouse, King's Lynn has been a centre of trade and industry since the Middle Ages, and its rich history is reflected in the many beautiful buildings which still line the historic quarter.

Originally named Bishop's Lynn, during the reign of Henry VIII the town was surrendered to the crown and took the name King's Lynn. During the 14th century, Lynn was England's most important port, dominated by the Hanseatic League. Although the growth of London later eroded the port's importance, ship-building and fishing became prominent industries, the latter of which is documented at True's Yard Museum.

With more than 400 listed buildings, two warehouses – Hanse House and Marriott's Warehouse

– still stand in the centre of the town, along with King's Lynn Minster and Custom House. These have appeared as stars of the screen in numerous period dramas and it's not unusual to spot a camera crew and cast on location.

King Street, which runs from Tuesday Market Place to the Custom House was once known as 'Stockfish Row' for the number of fish merchants that lived there. With a listed building every 26ft, Sir John Betjeman described it as one of the finest walks in England. In 1845, there were at least ten pubs on this street alone, and although these have faded away a relatively new arrival is the WhataHoot distillery with its gin school and handmade spirits.

With Cambridge, Peterborough and Norwich all within an hour's drive and a direct rail line into London King's Cross arriving in the capital in just 1 hour 40 minutes, King's Lynn continues to attract a growing number of professionals seeking an easy commuter route.

AGENTS NOTE

No parking
No pets or children
Integrated electric oven and hob

COUNCIL TAX

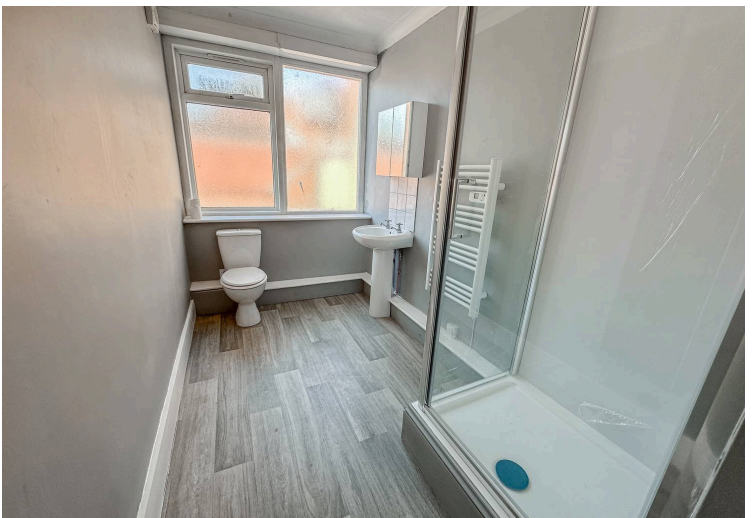
Band A.

ENERGY EFFICIENCY RATING

D. To retrieve the Energy Performance Certificate for this property please visit <https://find-energy-certificate.digital.communities.gov.uk/find-a-certificate/search-by-reference-number> and enter in the reference number above. Alternatively, the full certificate can be obtained through Sowerbys.

LOCATION

What3words: ///create.gifted.love



SOWERBYS

We are proudly supporting these Norfolk charities by organising and participating in events throughout 2025, along with making a donation for every home we sell.



Sowerbys Estate Agents Limited is a company registered in England and Wales, company no: 05668606.
Registered office 54 Westgate, Hunstanton, Norfolk, PE36 5EL

