



Becquerel Court

School Square, SE10

£1,625 pcm

A spacious two bedroom apartment within Becquerel Court at GMV on Greenwich Peninsula



Becquerel Court

School Square, SE10

- Two Double Bedrooms
- Two Bathrooms
- Secure Parking
- Close to North Greenwich (Jubilee Line)



This modern apartment is situated within Becquerel Court which is part of the Greenwich Millennium Village development.

The apartment comprises a large open plan kitchen and reception room with a fully integrated kitchen and dining space. Additionally, there are two double bedrooms with built in storage; one of which has an en suite Jack & Jill bathroom. As well as an additional main / family bathroom there is extra storage throughout the flat, a private balcony, and secure underground parking.

Becquerel Court is situated close to the O2 and North Greenwich (Jubilee Line) as well as Emirates Skyline and there is also easy access to Greenwich and the City.

Tenure: Long Let

Furnished, Part Furnished, Unfurnished

Additional tenant charges apply

Tenancy Agreement Fee: £222

References per Tenant/Guarantor: £60

Inventory check (approx. £100 – £250 inc. VAT)

chestertons.com/property-to-rent/applicable-fees

Energy Efficiency Rating		
	Current	Potential
Very energy efficient - lower running costs		
A (92-100)		
B (81-91)		
C (69-80)	78	80
D (55-68)		
E (39-54)		
F (21-38)		
Not energy efficient - higher running costs		
G (1-20)		
England, Scotland & Wales EU Directive 2002/91/EC		

Chestertons Greenwich & Blackheath Lettings

234 Trafalgar Road

London

SE10 9ER

lettings.greenwich@chestertons.com

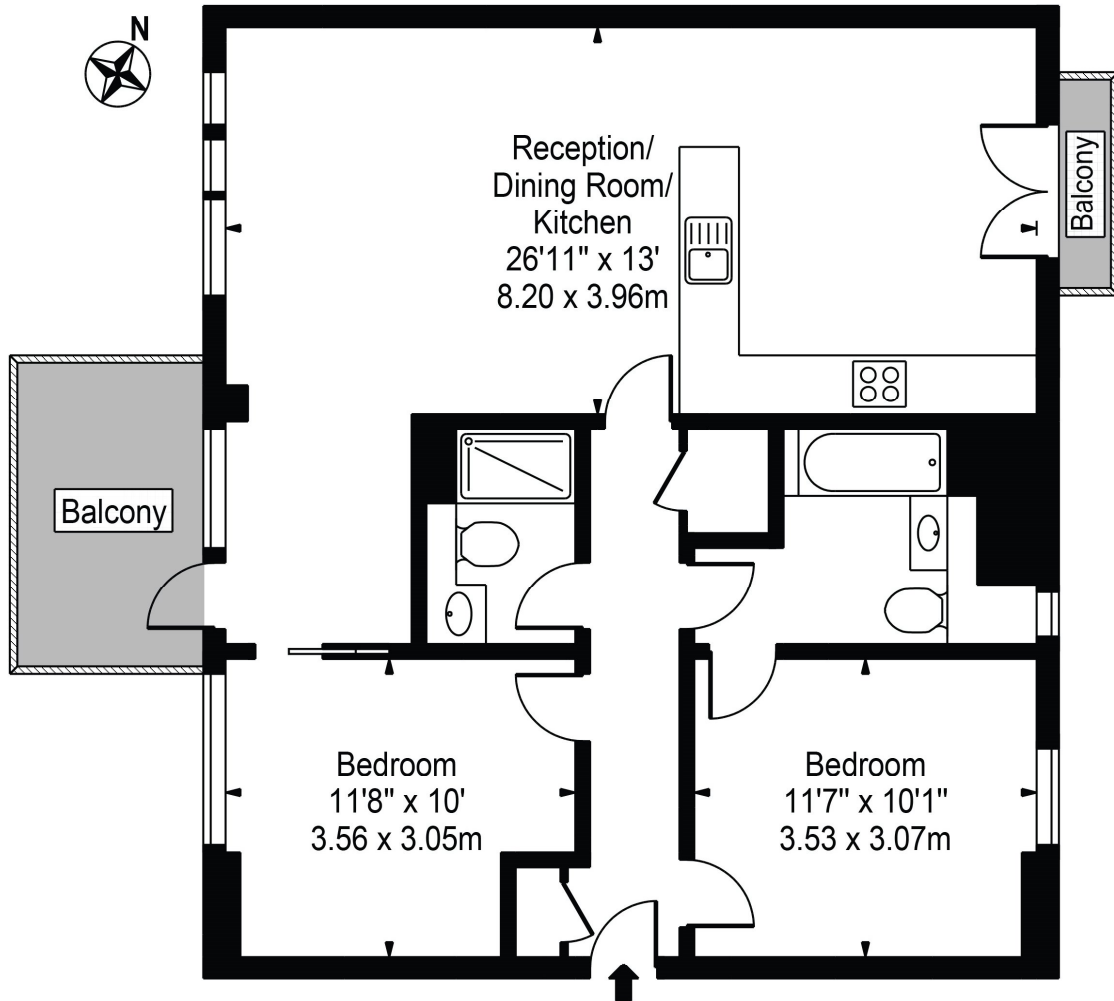
020 8104 7510

chestertons.com

A member of

Becquerel Court

Approx. Gross Internal Area 878 Sq Ft - 81.57 Sq M



First Floor

For Illustration Purposes Only - Not To Scale

This floor plan should be used as a general outline for guidance only and does not constitute in whole or in part an offer or contract. Any intending purchaser or lessee should satisfy themselves by inspection, searches, enquiries and full survey as to the correctness of each statement. Any areas, measurements or distances quoted are approximate and should not be used to value a property or be the basis of any sale or let.