



# Randall Place

London, SE10

£450 per week  
(£1,950 pcm)

A beautifully appointed two bedroom terraced cottage situated in the heart of historic Greenwich.



## Randall Place

London, SE10

- Located in Central Greenwich
- Two Bedroom Cottage
- Private Garden
- Converted Loft

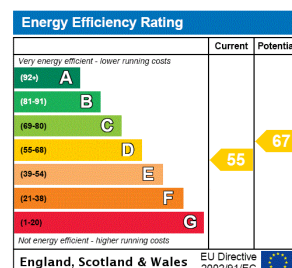


Chestertons are pleased to offer this immaculate and modernised two bedroom cottage on Randall Place.

Set in the heart of historic Greenwich, this terraced property comprises a bright and spacious open plan living and dining area with feature staircase leading to the upstairs. The kitchen incorporates built in units and a large utility area which leads to a private south west facing patio garden. There are two spacious double bedrooms, with the master bedroom located to the rear of the property, while the loft has been converted into an excellent usable space accessed via a loft ladder.

**Tenure:** Long Let  
**Part Furnished, Unfurnished**

Additional tenant charges apply  
 Tenancy Agreement Fee: £222  
 References per Tenant/Guarantor: £60  
 Inventory check (approx. £100 – £250 inc. VAT)  
[chestertons.com/property-to-rent/applicable-fees](http://chestertons.com/property-to-rent/applicable-fees)



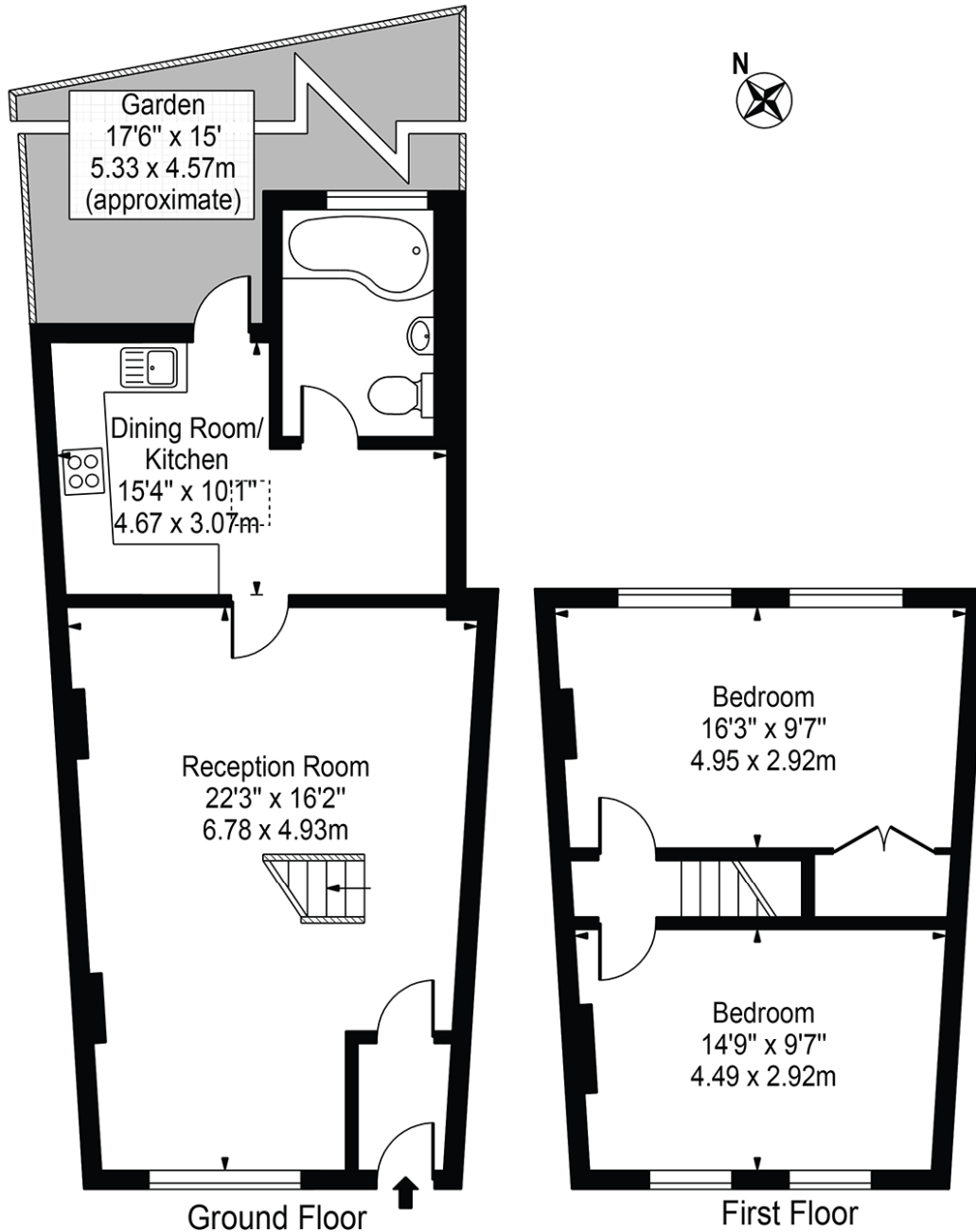
### Chestertons Greenwich & Blackheath Lettings

234 Trafalgar Road  
 London  
 SE10 9ER  
[lettings.greenwich@chestertons.com](mailto:lettings.greenwich@chestertons.com)  
 020 8104 7510  
[chestertons.com](http://chestertons.com)



# Randall Place

Approx. Gross Internal Area 852 Sq Ft - 79.15 Sq M



For Illustration Purposes Only - Not To Scale

This floor plan should be used as a general outline for guidance only and does not constitute in whole or in part an offer or contract. Any intending purchaser or lessee should satisfy themselves by inspection, searches, enquiries and full survey as to the correctness of each statement. Any areas, measurements or distances quoted are approximate and should not be used to value a property or be the basis of any sale or let.