



Papermill Wharf

50 Narrow Street, E14

£1,850 per month
(£426.92 per week)

A lovely 3rd floor one bedroom apartment benefiting from a lift, porter, parking space & direct river views. Situated close to Limehouse DLR station the property comprises a spacious reception/dining room, kitchen and bathroom. EPC B

CHESTERTONS



Papermill Wharf

50 Narrow Street, E14

- Direct river views
- 1 bed 1 bath
- parking and porter
- Limehouse DLR



This beautiful apartment boasts direct river views and is ideally located in Limehouse. A lovely 3rd floor one bedroom apartment benefiting from a lift, porter, parking space & direct river views, situated close to Limehouse DLR station the property comprises a spacious reception/dining room, kitchen and bathroom. EPC B

Minimum Term: months
Deposit Required: £0.00
Local Authority: Tower Hamlets
Council Tax Band:
EPC Rating: C
Furnished

Energy Efficiency Rating		
	Current	Potential
Very energy efficient - lower running costs		
A (91-100)		
B (81-90)		
C (69-80)	82	84
D (55-68)		
E (39-54)		
F (21-38)		
G (1-20)		
Not energy efficient - higher running costs		
England, Scotland & Wales EU Directive 2002/91/EC		

Chestertons Canary Wharf & Greenwich Lettings

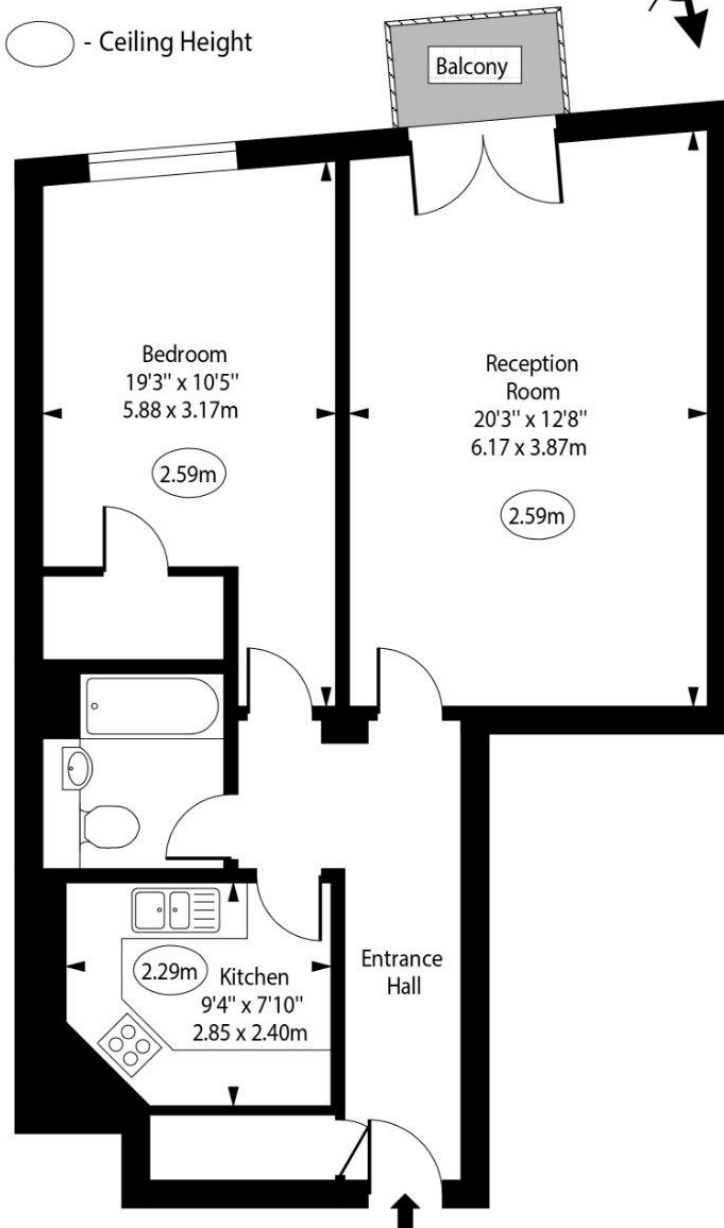
Harbour Island
 28 Harbour Exchange Square
 Canary Wharf & Docklands
 London
 E14 9GE
canarywharflettingsusers@chestertons.co.uk
 02075108310
chestertons.co.uk

Additional tenant charges apply (fees apply to non-AST tenancies only)
 Tenancy Agreement Fee: £300
 References per Tenant/Guarantor: £60
 Inventory check (approx. £100 – £250 inc. VAT)
chestertons.co.uk/property-to-rent/applicable-fees

Papermill Wharf,
Narrow Street, E14



○ - Ceiling Height



Third Floor

Approx Gross Internal Area 680 Sq Ft - 63.17 Sq M

For Illustration Purposes Only - Not To Scale

www.goldlens.co.uk

Ref. No. 021063R

