



# Neptune Court

Homer Drive, E14

£2,500 per month  
(£576.92 per week)

A bright, well-presented apartment with generous living space, modern interiors, river and city views, a private balcony, stylish bathrooms, a contemporary open style kitchen, and access to landscaped communal area.

**CHESTERTONS**



# Neptune Court

Homer Drive, E14

- Bright, well-presented apartment with modern interiors
- Spacious reception areas and a contemporary kitchen
- Private balcony with attractive river views
- Well-finished bedrooms and stylish bathrooms
- Access to landscaped communal gardens and outdoor spaces





**Minimum Term:** months  
**Deposit Required:** £2,884.62  
**Local Authority:** Tower Hamlets  
**Council Tax Band:** F  
**EPC Rating:** C

Score	Energy rating	Current	Potential
92+	A		
81-91	B		
69-80	C	79 C	82 B
55-68	D		
39-54	E		
21-38	F		
1-20	G		

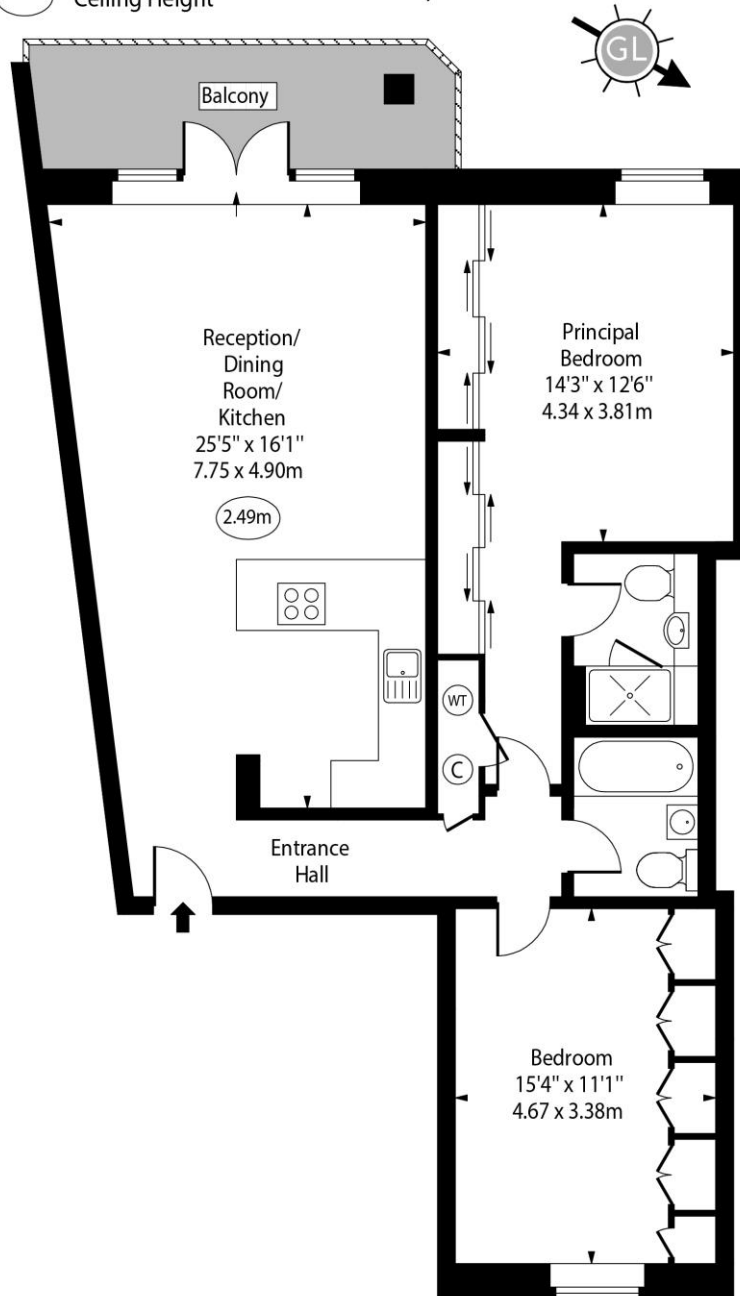
### *Chestertons Canary Wharf & Greenwich Lettings*

Harbour Island  
 28 Harbour Exchange Square  
 Canary Wharf & Docklands  
 London  
 E14 9GE  
[canarywharflettingsusers@chestertons.co.uk](mailto:canarywharflettingsusers@chestertons.co.uk)  
 02075108310

Additional tenant charges apply (fees apply to non-AST tenancies only)  
 Tenancy Agreement Fee: £300  
 References per Tenant/Guarantor: £60  
 Inventory check (approx. £100 – £250 inc. VAT)  
[chestertons.co.uk/property-to-rent/applicable-fees](http://chestertons.co.uk/property-to-rent/applicable-fees)

Neptune Court,  
Homer Drive, E14

○ - Ceiling Height



Seventh Floor

Approx Gross Internal Area 953 Sq Ft - 88.53 Sq M

Every attempt has been made to ensure the accuracy of the floor plan shown. However, all measurements, fixtures, fittings, and data shown are approximate interpretations and for illustrative purposes only. Measured according to the RICS. Not To Scale.

[www.goldlens.co.uk](http://www.goldlens.co.uk)  
Ref. No. 029959K

