



# St. Davids Square

London, E14

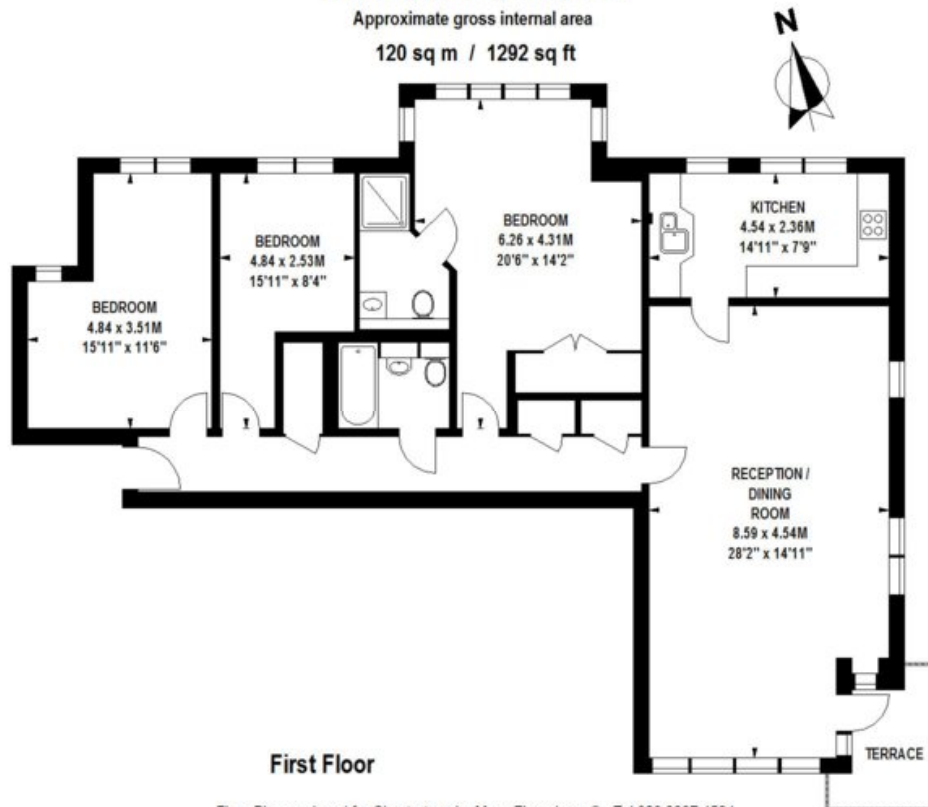
£2,750 pcm

Boasting river views, 3 double bedrooms, 2 bathrooms, huge reception and separate fully fitted kitchen. The development benefits from a swimming pool, gym, games room and 24 hour porter and the apartment further benefits from allocated parking.

**CHESTERTONS**  
*Canary Wharf*

## St. Davids Square, E14

Approximate gross internal area  
120 sq m / 1292 sq ft



Floor Plan produced for Chestertons by Mays Floorplans © . Tel 020 3397 4594  
Illustration for identification purposes only, not to scale  
All measurements are maximum, and include wardrobes and window bays where applicable

**Tenure:** Long Let  
**Furnished**

Additional tenant charges apply  
Tenancy Agreement Fee: £222  
References per Tenant/Guarantor: £60  
Inventory check (approx. £100 – £250 inc. VAT)  
[chestertons.com/property-to-rent/applicable-fees](https://www.chestertons.com/property-to-rent/applicable-fees)

Energy Efficiency Rating		
	Current	Potential
Very energy efficient - lower running costs		
(92+) <b>A</b>		
(81-91) <b>B</b>		
(69-80) <b>C</b>		
(55-68) <b>D</b>	65	77
(39-54) <b>E</b>		
(21-38) <b>F</b>		
(1-20) <b>G</b>		
Not energy efficient - higher running costs		
England, Scotland & Wales EU Directive 2002/91/EC		

## Chestertons Canary Wharf Lettings

Harbour Island  
28 Harbour Exchange Square  
London  
E14 9GE  
[kelly.rees@chestertons.com](mailto:kelly.rees@chestertons.com)  
020 7510 8310  
[chestertons.com](https://www.chestertons.com)



Chesterton Global Ltd trading as Chestertons for themselves and for the vendor of this property whose agents they are, give notice that (i) these particulars do not constitute any part of an offer or contract, (ii) all statements contained within these particulars are made without responsibility on the part of Chestertons or the vendor, (iii) whilst made in good faith, none of the statements contained within these particulars are to be relied upon as a statement or representation of fact, (iv) any intending purchasers must satisfy themselves by inspection or otherwise as to the correctness of each of the statements contained within these particulars, (v) the vendor does not make or give either Chestertons or any person in their employment any authority to make or give representation or warranty whatsoever in relation to this property. Wide angle lenses may be used. ©Copyright Chestertons | Chesterton Global Ltd | Registered Office 7<sup>th</sup> Floor, St Magnus House, 3 Lower Thames Street, London, EC3R 6HD Registered Company Number 05334580.