

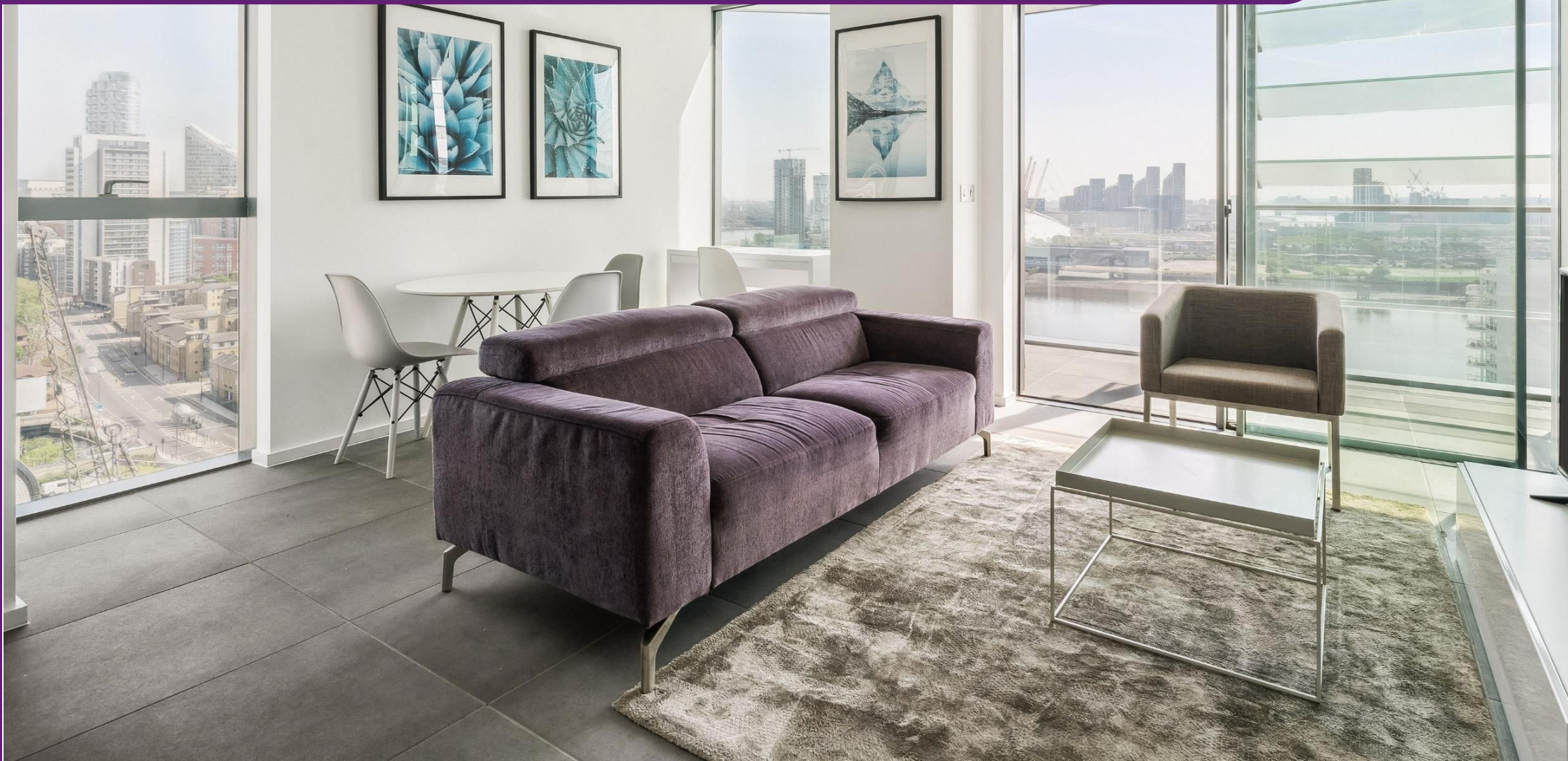
DOLLAR BAY POINT

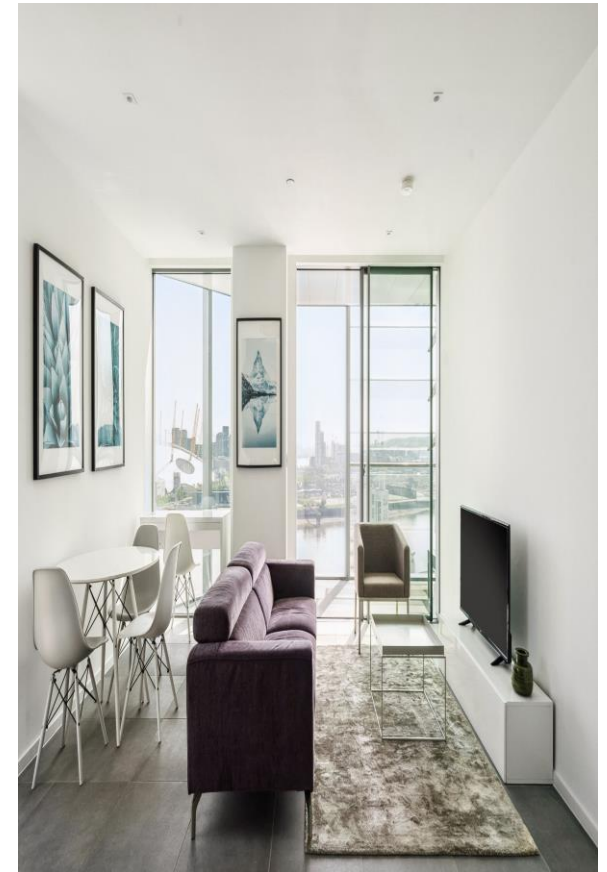
LONDON E14

CHESTERTONS

DOLLAR BAY POINT

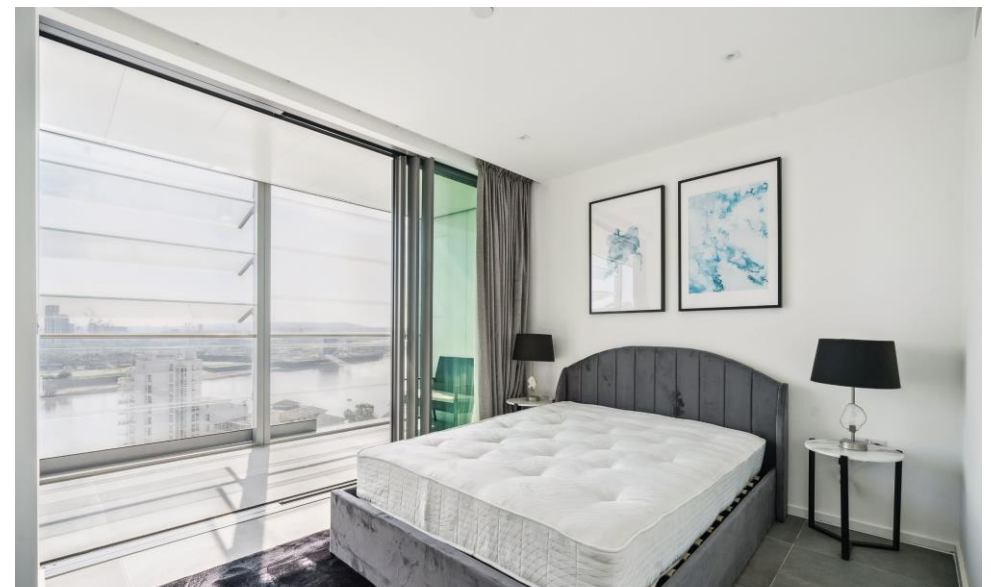
Benefitting from direct views of the Thames, sleek fixtures and fittings and very modern interior. The apartment boasts 1 bedroom, 1 bathroom, reception and fully fitted kitchen. Located walking distance from Canary Wharf.





Specifications

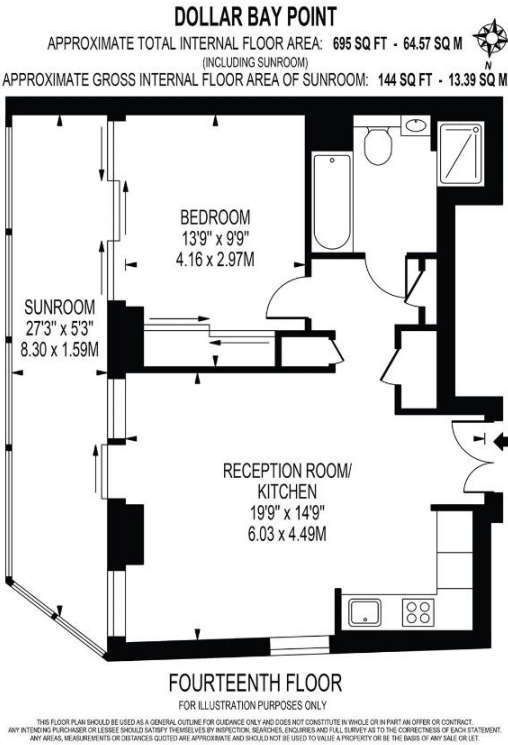








Price: | EPC: B



Dollar Bay Point, E14

Approximate gross Internal area
0.0 sq m / ∞/Sq.Ft. p/m

This plan is for layout guidance only. Not drawn to scale unless stated. Windows and door openings approximate. Whilst every care is taken in the preparation of this plan, please check all dimensions, shapes and compass bearings before making decisions reliant upon them.

Location

{Please type the description manually}

Chestertons Canary Wharf & Greenwich
28 Harbour Exchange Square
Canary Wharf & Docklands, London,

02075108310
canarywharflettingsusers@chestertons.c
chestertons.co.uk

Chesterton Global Ltd trading as Chestertons for themselves and for the vendor of this property whose agents they are, give notice that (i) these particulars do not constitute any part of an offer or contract, (ii) all statements contained within these particulars are made without responsibility on the part of Chestertons or the vendor, (iii) whilst made in good faith, none of the statements contained within these particulars are to be relied upon as a statement or representation of fact, (iv) any intending purchasers must satisfy themselves by inspection or otherwise as to the correctness of each of the statements contained within these particulars, (v) the vendor does not make or give either Chestertons or any person in their employment any authority to make or give representation or warranty whatsoever in relation to this property. Wide angle lenses may be used. ©Copyright Chestertons | Chesterton Global Ltd | Registered Office 40 Connaught Street, Hyde Park, London W2 2AB Registered Company Number 05334580.

