



Hampton Apartments

Duke of Wellington Avenue, SE18





Chestertons are delighted to offer this brand new studio apartment to the market.

- Studio Apartment
- 9th Floor
- Brand New
- Close to DLR

£1,225 pcm

Additional tenant charges apply

Tenancy Agreement Fee: £222

References per Tenant/Guarantor: £60

Inventory check (approx. £100 – £250 inc. VAT)

chestertons.com/property-to-rent/applicable-fees

Energy Efficiency Rating		
	Current	Potential
Very energy efficient - lower running costs		
A (1-10)		
B (11-15)		
C (16-20)		
D (21-25)		
E (26-30)		
F (31-35)		
G (36-50)		
Not energy efficient - higher running costs		
England, Scotland & Wales EU Directive 2002/91/EC		

Tenure: Long Let

Furnished

Chestertons Greenwich & Blackheath Sales

234 Trafalgar Road

London

SE10 9ER

lettings.greenwich@chestertons.com

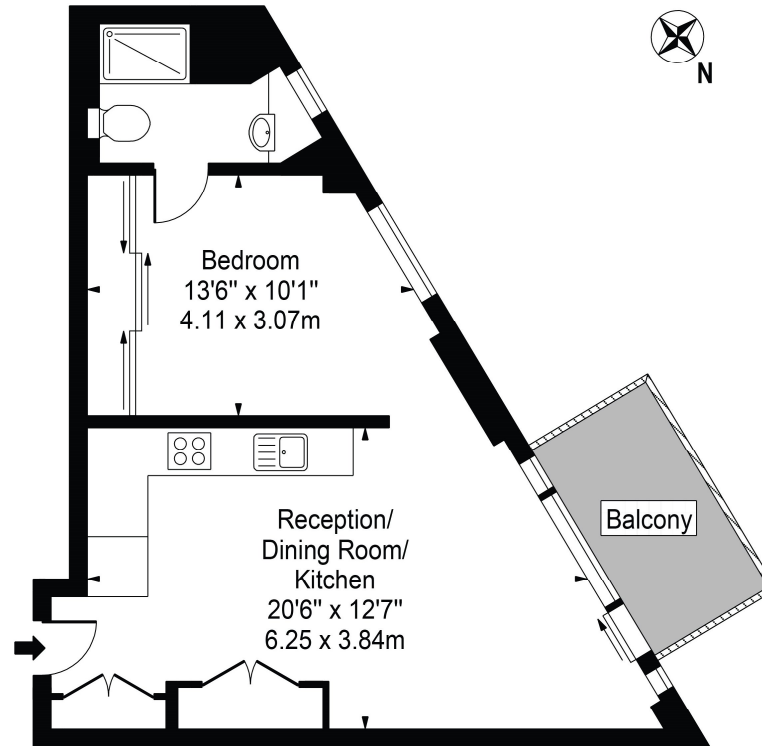
02081047510

chestertons.com



Hampton Apartments, SE18

Approx. Gross Internal Area 456 Sq Ft - 42.36 Sq M



Ninth Floor

For Illustration Purposes Only - Not To Scale

This floor plan should be used as a general outline for guidance only and does not constitute in whole or in part an offer or contract. Any intending purchaser or lessee should satisfy themselves by inspection, searches, enquiries and full survey as to the correctness of each statement. Any areas, measurements or distances quoted are approximate and should not be used to value a property or be the basis of any sale or let.