



Swaton Road

London, E3

£3,500 per month
(£807.69 per week)

Large terrace house with four double bedrooms, modern kitchen diner, separate reception and modern family bathroom. The property also includes a guest WC and front and rear gardens.

CHESTERTONS



Swaton Road

London, E3

- 4 BEDROOMS
- 1 BATHROOM
- FURNISHED
- END OF TERRACE HOUSE
- GARDEN



Large terrace house with four double bedrooms, modern kitchen diner, separate reception and modern family bathroom. The property also includes a guest WC and front and rear gardens.

Minimum Term: months
Deposit Required: £0.00
Local Authority:
Council Tax Band:
EPC Rating: To be confirmed
Furnished

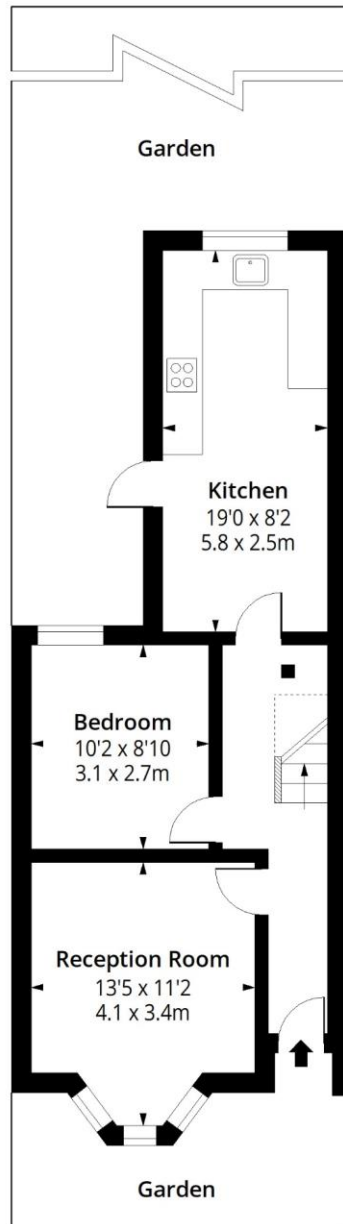
Chestertons Canary Wharf & Greenwich Lettings

Harbour Island
28 Harbour Exchange Square
Canary Wharf & Docklands
London
E14 9GE
lettings.canarywharf@chestertons.co.uk
02075108310
chestertons.co.uk

Additional tenant charges apply (fees apply to non-AST tenancies only)
Tenancy Agreement Fee: £300
References per Tenant/Guarantor: £60
Inventory check (approx. £100 – £250 inc. VAT)
chestertons.co.uk/property-to-rent/applicable-fees

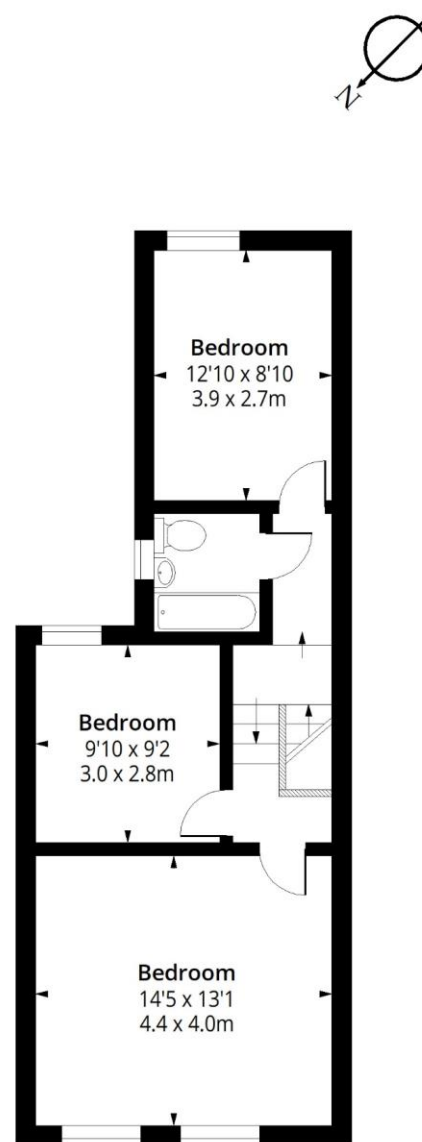
Swaton Road, E3

Approx. Gross Internal Area 1008 Sq Ft - 93.64 Sq M



Ground Floor

Floor Area 480 Sq Ft - 44.59 Sq M



First Floor

Floor Area 528 Sq Ft - 49.05 Sq M



Measured according to RICS IPMS2. Floor plan is for illustrative purposes only and is not to scale. Every attempt has been made to ensure the accuracy of the floor plan shown, however all measurements, fixtures, fittings and data shown are an approximate interpretation for illustrative purposes only. 1 sq m = 10.76 sq feet.

lpaplus.com

Date: 1/6/2023



This paper is 100% recyclable