

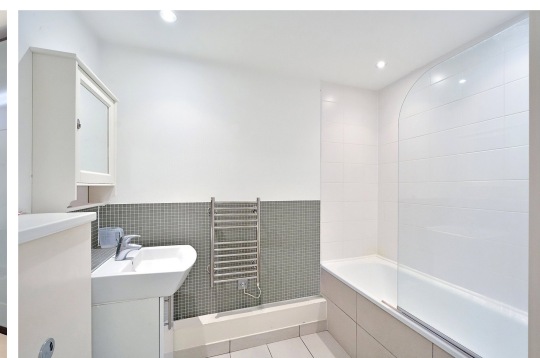


Union Park

London, SE10

£1,450 pcm

A smart two bedroom apartment within the popular Union Park development close to Vanbrugh Hill.



Union Park

London, SE10

- Two Bedrooms
- Close to Greenwich Square
- Secure Parking
- Close to Maze Hill



Chestertons have the pleasure of offering this smart two bedroom apartment within the popular Union Park development close to Vanbrugh Hill.

The property comprises a bright reception and dining room, a kitchen with integrated appliances, 2 double bedrooms and a modern bathroom. Further benefits include central heating, good storage and a secure parking space.

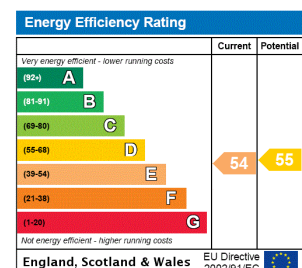
Union Park is ideally placed for access to Maze Hill Station with its regular service into Cannon Street via London Bridge. There are also numerous bus routes close by which lead to North Greenwich for the Jubilee Line and the O2 as well the Maritime Greenwich World Heritage Site with its attractions, DLR and River Bus services. Viewing is highly recommended.

EPC Rating E

Please note: All tenancies are subject to a Tenancy Agreement Fee of £222.00 and Reference fee at £60.00 per tenant.

Tenure: Long Let
Furnished

Additional tenant charges apply
Tenancy Agreement Fee: £222
References per Tenant/Guarantor: £60
Inventory check (approx. £100 – £250 inc. VAT)
[chestertons.com/property-to-rent/applicable-fees](https://www.chestertons.com/property-to-rent/applicable-fees)



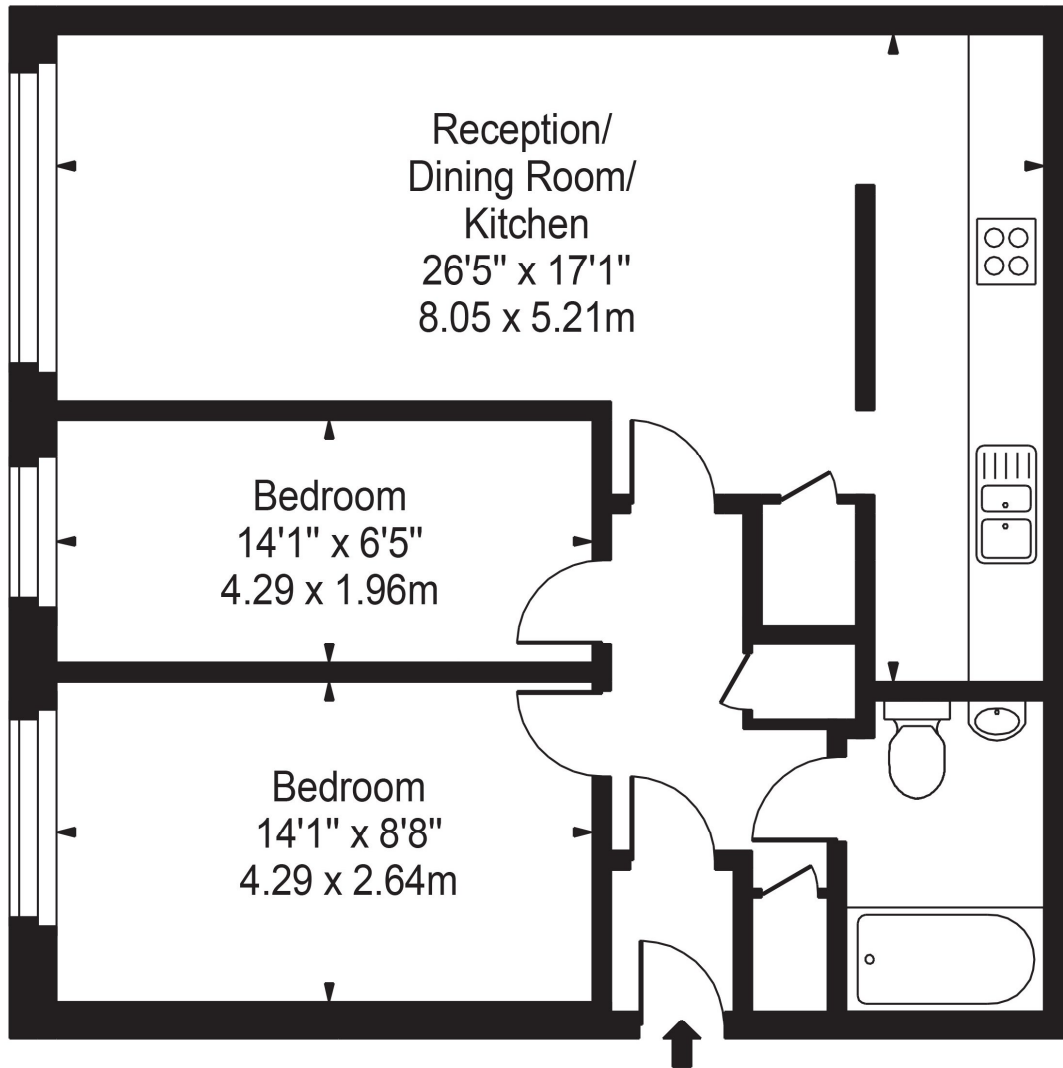
Chestertons Greenwich & Blackheath Lettings

234 Trafalgar Road
London
SE10 9ER
lettings.greenwich@chestertons.com
020 8104 7510
[chestertons.com](https://www.chestertons.com)

A member of
onTheMarket.com

Union Park, SE10

Approx. Gross Internal Area 683 Sq Ft - 63.45 Sq M



Ground Floor

For Illustration Purposes Only - Not To Scale

This floor plan should be used as a general outline for guidance only and does not constitute in whole or in part an offer or contract. Any intending purchaser or lessee should satisfy themselves by inspection, searches, enquiries and full survey as to the correctness of each statement. Any areas, measurements or distances quoted are approximate and should not be used to value a property or be the basis of any sale or let.