

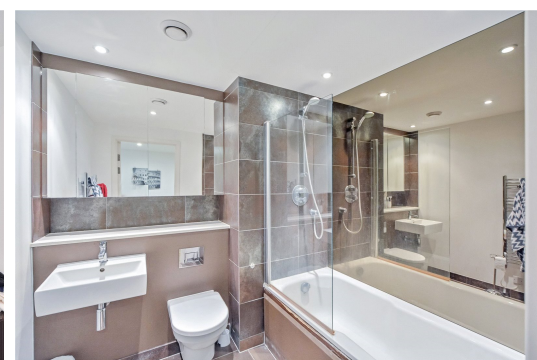
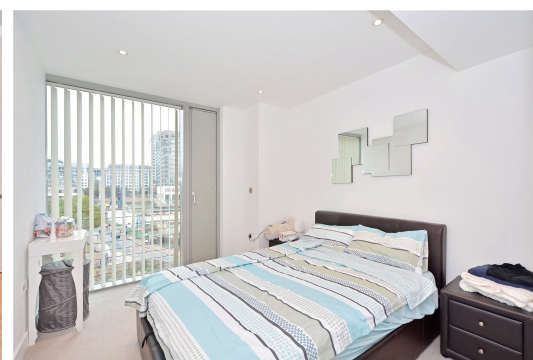


# Landmark West Tower

22 Marsh Wall, E14

£403 per week  
(£1,746.33 pcm)

The apartment comprises a double bedroom with fitted wardrobes, modern fully fitted kitchen, and sleek bathroom. The apartment boasts spectacular views and is located walking distance from Canary Wharf and all its amenities. EPC rating B



## Landmark West Tower

22 Marsh Wall, E14

- Modern and sleek apartment
- 1 bed 1 bath
- Porter and gym
- EPC rating B

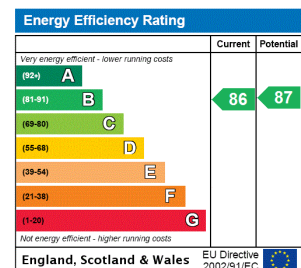




Exceptionally well-located 1 bedroom apartment in a landmark development. The apartment comprises a double bedroom with fitted wardrobes, modern fully fitted kitchen, and sleek bathroom. The apartment boasts spectacular views and is located walking distance from Canary Wharf and all its amenities. EPC rating B

**Tenure:** Long Let  
**Furnished**

Additional tenant charges apply  
 Tenancy Agreement Fee: £222  
 References per Tenant/Guarantor: £60  
 Inventory check (approx. £100 – £250 inc. VAT)  
[chestertons.com/property-to-rent/applicable-fees](http://chestertons.com/property-to-rent/applicable-fees)



### Chestertons Canary Wharf Lettings

Harbour Island  
 28 Harbour Exchange Square  
 Canary Wharf & Docklands  
 London  
 E14 9GE  
[kelly.rees@chestertons.com](mailto:kelly.rees@chestertons.com)  
 020 7510 8310  
[chestertons.com](http://chestertons.com)



