



# Elm Road

East Sheen, SW14

Asking Price £1,345,000

A very attractive 1973 sq. ft. approx. five bedroom semi-detached Edwardian family home located in the heart of East Sheen. Large open plan kitchen out to a mature garden, front sitting room and two bathrooms. CHAIN FREE (some photos virtually furnished)



# Elm Road

## East Sheen, SW14

- Five bedrooms
- Central East Sheen location
- Approx. 1973 Sq. ft.
- Utility room
- Ample storage in loft
- No chain



A very attractive spacious five bedroom semi-detached Edwardian family home of approximately 1973 sq. ft., located close to Waitrose and Mortlake Station in central East Sheen.

On the ground floor is a spacious and bright reception room leading to a beautiful open plan kitchen and dining area and lovely mature garden. Separating the rooms on the ground floor are a utility room and downstairs WC.

On the first floor is a large master bedroom and en suite shower room and two further bedrooms and a bathroom. There is a spacious loft which sits above the first floor back bedroom and family bathroom with a large amount of storage.

This lovely period property also has two further bedrooms on the second floor completing a very desirable family home.

The house is close to the local amenities East Sheen has to offer including Mortlake Station, Waitrose and Ofsted rated outstanding primary schools.

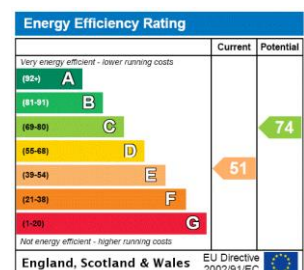
**Tenure:** Freehold

**Service Charge:** N/A

**Ground Rent:** N/A

**Local Authority:** London Borough of Richmond upon Thames

**Council Tax Band:** E

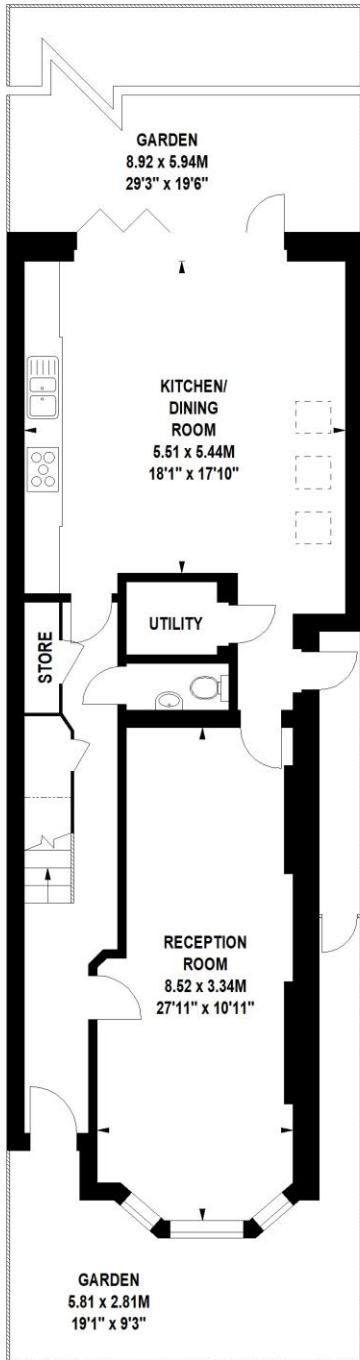


### *Chestertons East Sheen Sales*

254A Upper Richmond Road West  
 East Sheen  
 London  
 SW14 8AG  
 sheen@chestertons.co.uk  
 020 8104 0580  
 chestertons.co.uk

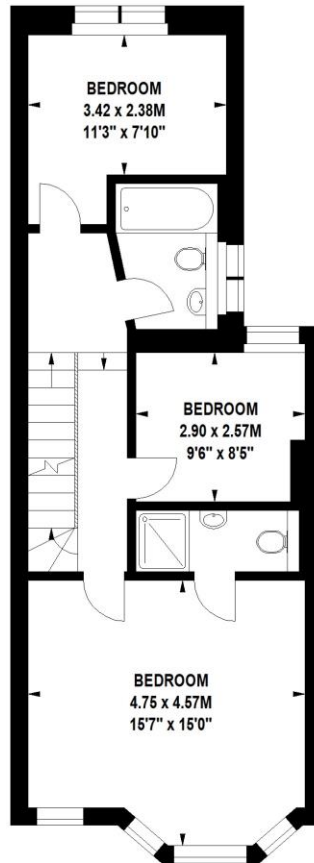
## Elm Road, SW14

Approximate gross internal area  
 183.25 sq m / 1973 sq ft  
 (Including Eaves Storage)  
 Eaves Storage  
 16.44 sq m / 177 sq ft



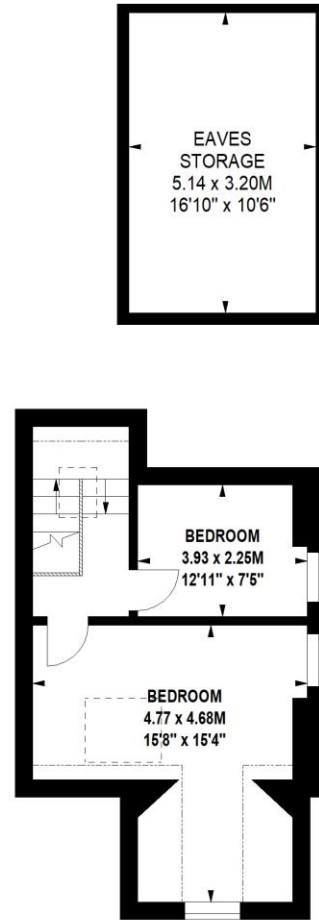
**Ground Floor**

854 sq ft



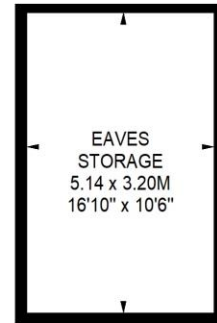
**First Floor**

609 sq ft



**Second Floor**

333 sq ft



The floor plan is not to scale and measurements and areas shown are approximate and therefore should be used for illustrative purposes only. The plan has been prepared in accordance with the RICS code of Measuring Practice and whilst we have confidence in the information produced, it must not be relied on. If there is any aspect of particular importance, you should carry out or commission your own inspection of the property.  
 Copyright of FeaturePRO.

