



# Sheen Lane

London, SW14

Asking Price £500,000

Beautifully Refurbished Top-Floor Apartment Opposite Mortlake Green

Offered with no onward chain and vacant possession, this stunning top-floor apartment has been fully refurbished to an exceptional standard, blending contemporary style with practical design throughout.

The property features attractive wood-effect flooring, double glazing, and a sleek modern kitchen and shower room. The layout includes two bedrooms, a spacious and light-filled reception room, and a stylishly appointed kitchen and bathroom.

In addition, the apartment boasts two generous loft spaces, ideal for storage, wardrobes, or as occasional use spaces — perfect for a home office or study area.

Perfectly positioned opposite Mortlake Green, the apartment enjoys charming green views and benefits from a superb location close to the Thames riverside path, Mortlake Station (ideal for commuters), and the vibrant local amenities of Sheen Lane. A highly regarded primary school is also within easy reach, making this a great choice for families.

Be the first to enjoy this beautifully renovated home in a sought-after location.

**CHESTERTONS**



# Sheen Lane

## London, SW14

- Refurbished Throughout
- Two Bedrooms
- Large Reception Room
- Modern Bathroom and Kitchen
- Two Large Loft Spaces
- No Onward Chain
- Sought After Location





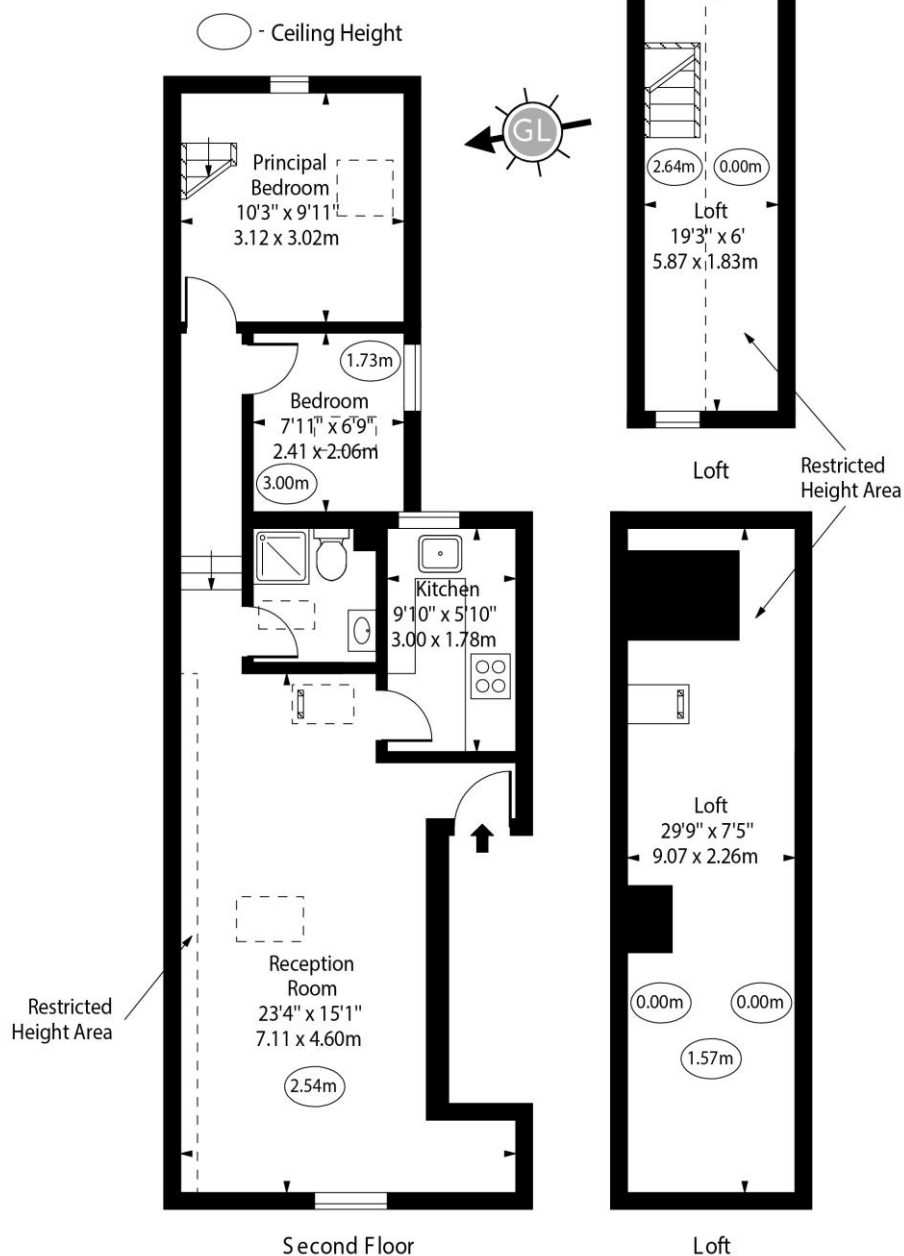
**Tenure:** Leasehold  
**Service Charge:** £0  
**Ground Rent:** £0  
**Local Authority:** London Borough of Richmond upon Thames  
**Council Tax Band:** D

Score	Energy rating	Current	Potential
92+	A		
81-91	B		
69-80	C	73 C	77 C
55-68	D		
39-54	E		
21-38	F		
1-20	G		

### *Chestertons East Sheen Sales*

254A Upper Richmond Road West  
East Sheen  
London  
SW14 8AG  
sheen@chestertons.co.uk  
020 8104 0580  
chestertons.co.uk

# Sheen Lane, SW14



Approx Gross Internal Area 572 Sq Ft - 53.14 Sq M

Approx. Floor Area Including Restricted Heights 926 Sq Ft - 86.03 Sq M  
(Including Lofts)

Lofts Area 338 Sq Ft - 31.40 Sq M

Every attempt has been made to ensure the accuracy of the floor plan shown.  
However, all measurements, fixtures, fittings, and data shown are approximate interpretations and  
for illustrative purposes only. Measured according to the RICS. Not To Scale.

[www.goldlens.co.uk](http://www.goldlens.co.uk)

Ref. No. 029296.1E

