



Deanhill Court

Upper Richmond Road West, SW14

Offers Over £550,000

Stunning Refurbished Two -Bedroom Apartment with Private Garage & Panoramic London Views.

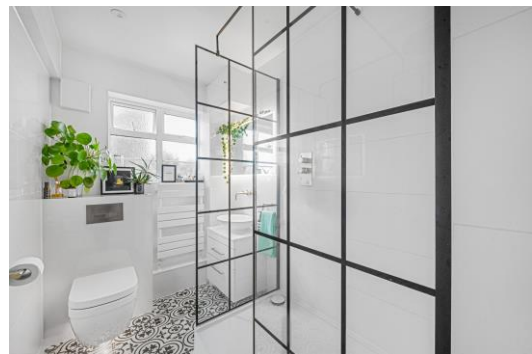
A beautifully refurbished two-bedroom apartment set on the fourth floor of a popular Art Deco development, complete with lift access and a rare private garage. This turn-key home benefits from quiet, gated access away from the road and offers breath-taking views across Central, East, and West London, including many iconic landmarks.

The spacious accommodation comprises two great-sized bedrooms — the larger currently used as a walk-in wardrobe with excellent built-in storage — flexible to suit your needs. The modern bathroom features a large walk-in shower, while the timeless kitchen offers sleek design and ample storage. The reception room provides a cosy gas fireplace and ample space for seating and dining, complemented by wooden flooring and double glazing throughout.

The private garage, sized for a small car or secure bike storage, is a valuable addition rarely found in this sought-after development.

Situated for easy access to East Sheen and Richmond's wide array of shops, restaurants, and bars. Richmond Park, with 2,500 acres of parkland and popular cycling and running routes, is just half a mile away. Excellent local schools, including Sheen Mount Primary, and both North Sheen and Richmond stations for commuters are also nearby.

CHESTERTONS



Deanhill Court

Upper Richmond Road West, SW14

- Amazing Views
- Upper Floor with Lift
- Private Garage
- Extended Lease
- Fully Refurbished Condition
- Close to Richmond Park, Schools and Stations

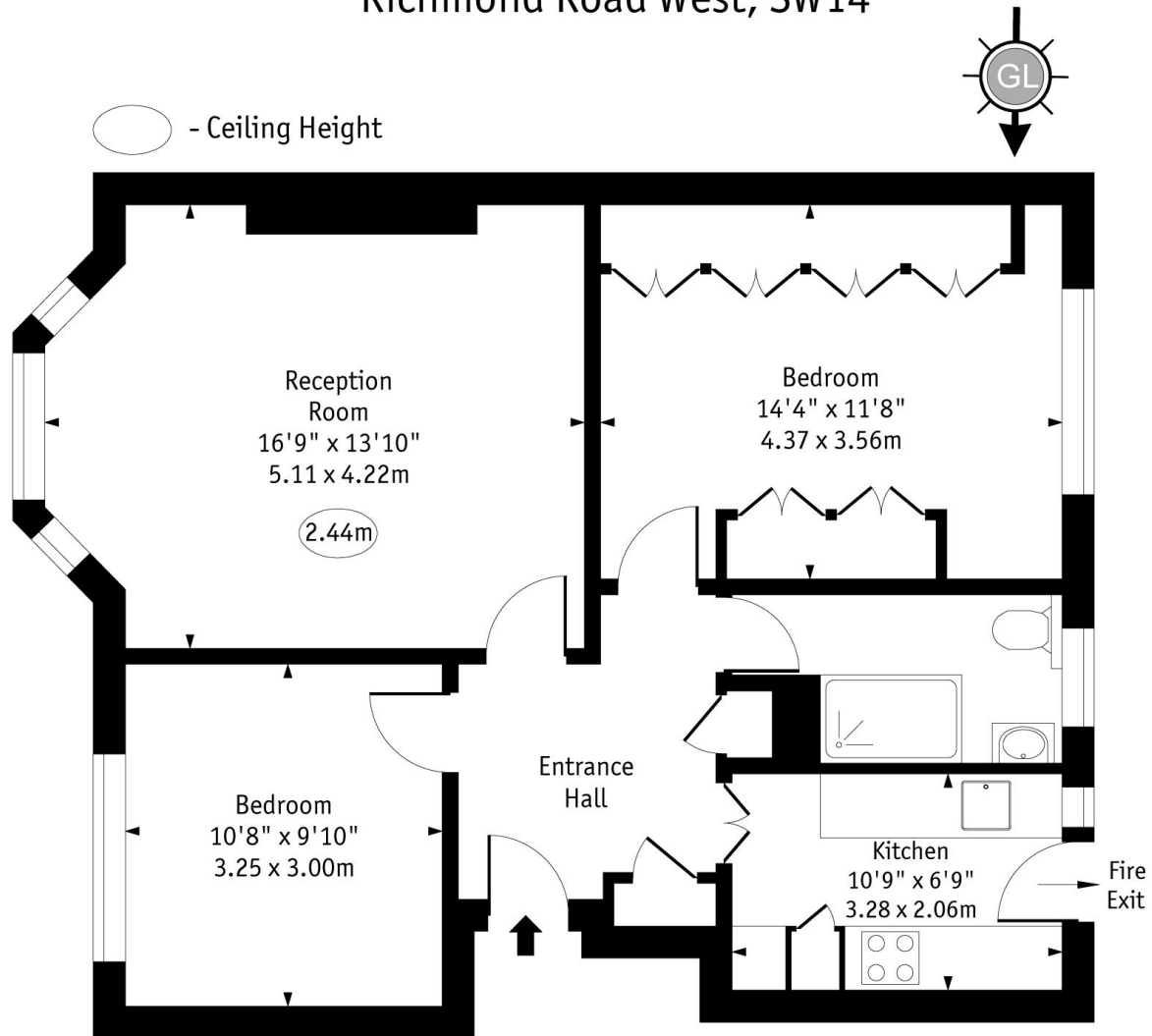


Tenure: Leasehold 170 years 11 months
Service Charge: £2988 Includes hot water
Ground Rent: £0
Local Authority: Richmond
Council Tax Band: D

Chestertons East Sheen Sales

254A Upper Richmond Road West
East Sheen
London
SW14 8AG
sheen@chestertons.co.uk
020 8104 0580
chestertons.co.uk

Deanhill Court,
Richmond Road West, SW14



Fourth Floor

Approx Gross Internal Area 714 Sq Ft - 66.33 Sq M

Every attempt has been made to ensure the accuracy of the floor plan shown.
However, all measurements, fixtures, fittings, and data shown are approximate interpretations and
for illustrative purposes only. Measured according to the RICS. Not To Scale.

www.goldlens.co.uk
Ref. No. 029359EH

