



Portman Avenue
East Sheen, SW14

CHESTERTONS





A rare opportunity to purchase an attractive Edwardian house that has recently undergone a full extension and renovation by the current owners. The house has retained a wealth of period features that are seamlessly integrated into a spacious and versatile layout ideal for modern life.

This stunning family home has a large open plan reception room with a kitchen island, seating family area and a dining space; the epitome of modern family living. Further accommodation on the ground floor includes a characterful reception room with period fire place, a down stairs WC and separate utility room.

On the first floor there are three double bedrooms and two family bathrooms, whilst the extended top floor has two further double bedrooms and a family shower room.

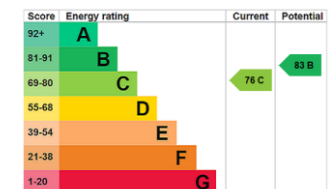
The West facing garden is accessed from the expansive bifold doors on the open plan kitchen/family room and features a patio area and lawned garden with mature borders.

Portman Avenue is an attractive Edwardian Avenue located in central East Sheen within a five minute walk of Mortlake Station with trains into Waterloo and Outstanding Ofsted rated primary schools.

If you are looking for a 'turn-key' family home then this property will be sure to impress.

- Five Bedrooms
- Three Bathrooms
- Fully Extended
- Comprehensively Refurbished
- West Facing Garden

Guide Price £1,675,000



Tenure: Freehold

Local Authority: London Borough of Richmond upon Thames

Council Tax Band: G

Chestertons East Sheen Sales

254A Upper Richmond Road West

East Sheen

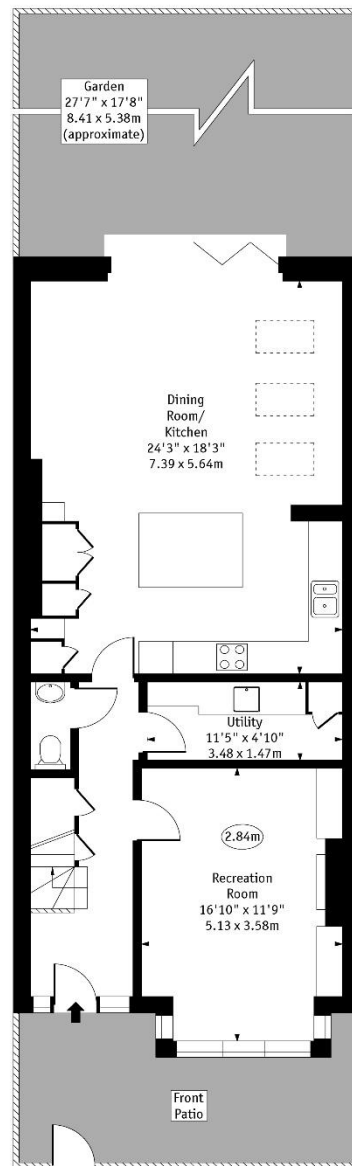
London

SW14 8AG

sheen@chestertons.co.uk

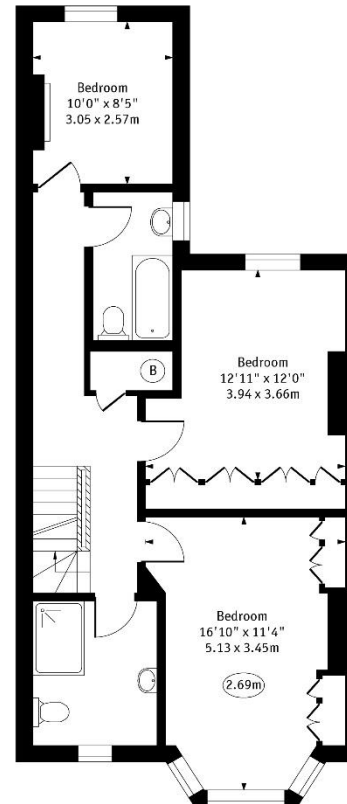
020 8104 0580

Portman Avenue,
East Sheen, SW14

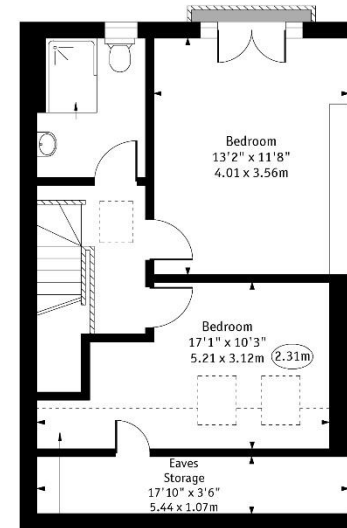


Ground Floor

○ - Ceiling Height



First Floor



Restricted
Height Area

Second Floor

Approx Gross Internal Area 1920 Sq Ft - 178.37 Sq M

Approx Gross Internal Area Including Restricted Height 2035 Sq Ft - 189.05 Sq M
(Including Eaves Storage)

Every attempt has been made to ensure the accuracy of the floor plan shown.
However, all measurements, fixtures, fittings, and data shown are approximate interpretations and
for illustrative purposes only.

Measured according to the RICS IPMS 2. Not To Scale.

www.goldlens.co.uk
Ref No. 0281815H

Chesterton UK Services Limited trading as Chestertons for themselves and for the vendor of this property whose agents they are, give notice that (i) these particulars do not constitute any part of an offer or contract, (ii) all statements contained within these particulars are made without responsibility on the part of Chestertons or the vendor, (iii) whilst made in good faith, none of the statements contained within these particulars are to be relied upon as a statement or representation of fact, (iv) any intending purchasers must satisfy themselves by inspection or otherwise as to the correctness of each of the statements contained within these particulars, (v) the vendor does not make or give either Chestertons or any person in their employment any authority to make or give representation or warranty whatsoever in relation to this property. Wide angle lenses may be used. ©Copyright Chestertons | Chesterton UK Services Limited | Registered Office 40 Connaught Street, Hyde Park, London W2 2AB Registered Company Number 05334580.



This paper is
100% recyclable