



Upper Richmond Road West

East Sheen, SW14

Guide Price £585,000

A spacious top floor apartment with dual aspect providing natural light throughout. A feature of this property is the two large double bedrooms that both provide ample space and wardrobe storage.

The property is accessed from the first floor which provides a split-level access with your own internal staircase providing a feeling of space and character as you enter the property.

The excellent sized reception room has wood effect flooring and features a large modern open plan kitchen area.

Positioned centrally in Sheen nearby local amenities on your doorstep include a large array of popular bakeries, coffee shops, supermarkets and restaurants. Mortlake Train Station with trains to Waterloo is within a five-minute walk. Local highly rated primary schools can be found within half a mile as can the wide-open spaces of Richmond Park.



Upper Richmond Road West

East Sheen, SW14

- Top Floor Flat
- Two Double Bedrooms
- Modern Kitchen/Bathroom
- Central Sheen Location



Tenure: Leasehold 96 years

Service Charge: Buildings Insurance only - £400 per annum.

EPC To Be Confirmed

Ground Rent: £75 per annum

Local Authority: London Borough of Richmond upon Thames

Council Tax Band: D

Chestertons East Sheen Sales

254A Upper Richmond Road West

East Sheen

London

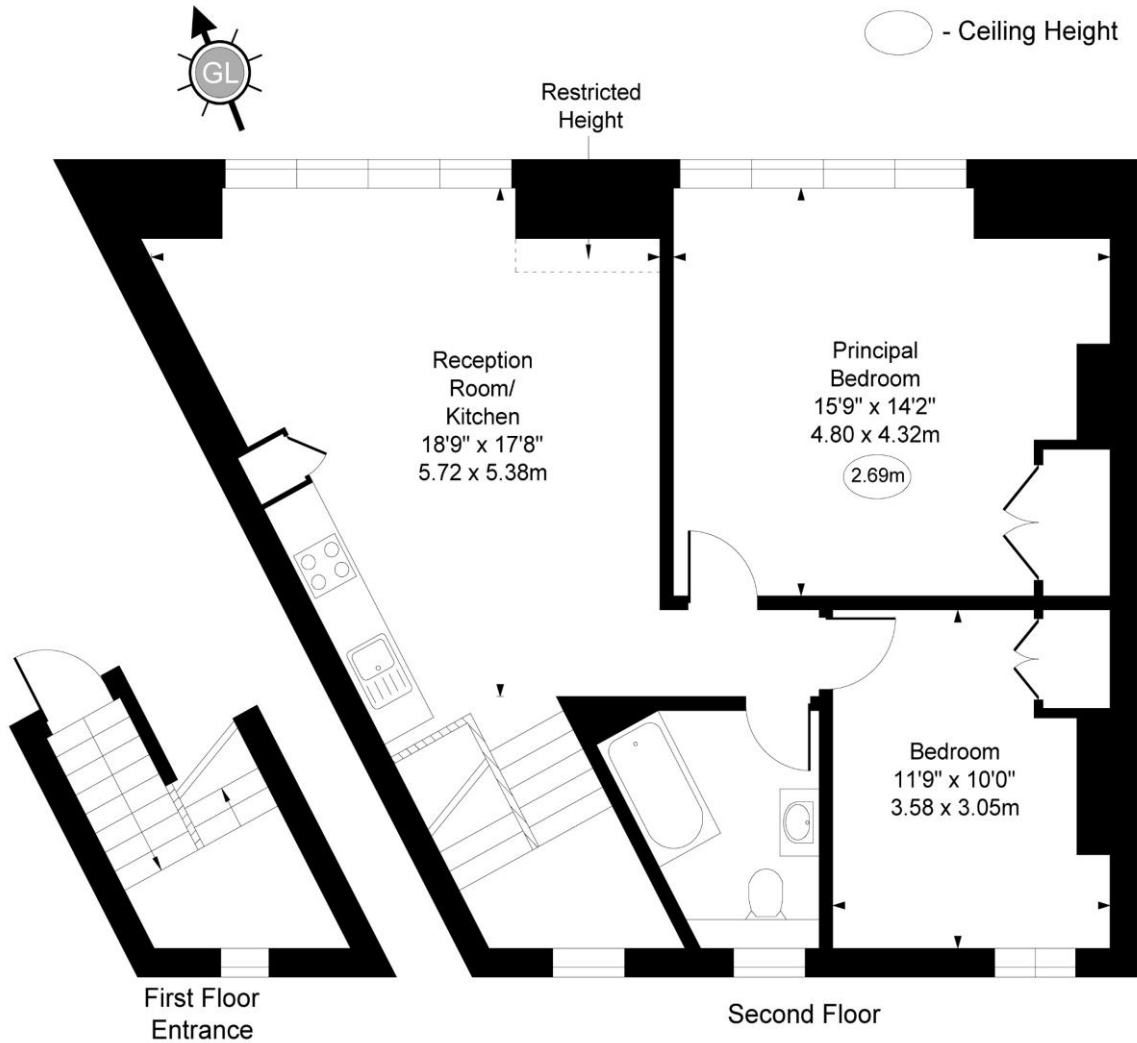
SW14 8AG

sheen@chestertons.co.uk

020 8104 0580

chestertons.co.uk

Upper Richmond Road West,
East Sheen, SW14



Approx Gross Internal Area 795 Sq Ft - 73.85 Sq M
Approx. Floor Area Including Restricted Height 800 Sq Ft - 74.32 Sq M

For Illustration Purpose Only - Not To Scale
www.goldlens.co.uk
Ref. No. 027626EH