



Sheen Lane

East Sheen, SW14

Offers in excess of £385,000

A first-floor apartment with two bedrooms located close to Mortlake Station. This period property is located above a bakery on the popular Sheen Lane in East Sheen.

The bright reception room features a gorgeous period fireplace with built in alcove storage either side. The principal bedroom has built in wardrobes and window seat. The second bedroom would make an ideal work from home study or nursery and also features a period wrought iron fireplace. A separate galley kitchen and family bathroom complete the accommodation.

Positioned in the heart of East Sheen only moments from Mortlake Station with access into London Waterloo, an Outstanding Ofsted rated school, and the many supermarkets, restaurants and independent shops on your door step.

Open spaces for relaxation and recreation can be found at Mortlake Green, the River Thames footpath and Richmond Park.



Sheen Lane

East Sheen, SW14

- First Floor Apartment
- Two Bedrooms
- Period Conversion
- Central Sheen Location
- Close to Mortlake Station



Tenure: Leasehold 88 years – expires 25-12-2113

Service Charge: £0

Ground Rent: £150 per annum

Local Authority: London Borough of Richmond upon Thames

Council Tax Band: C

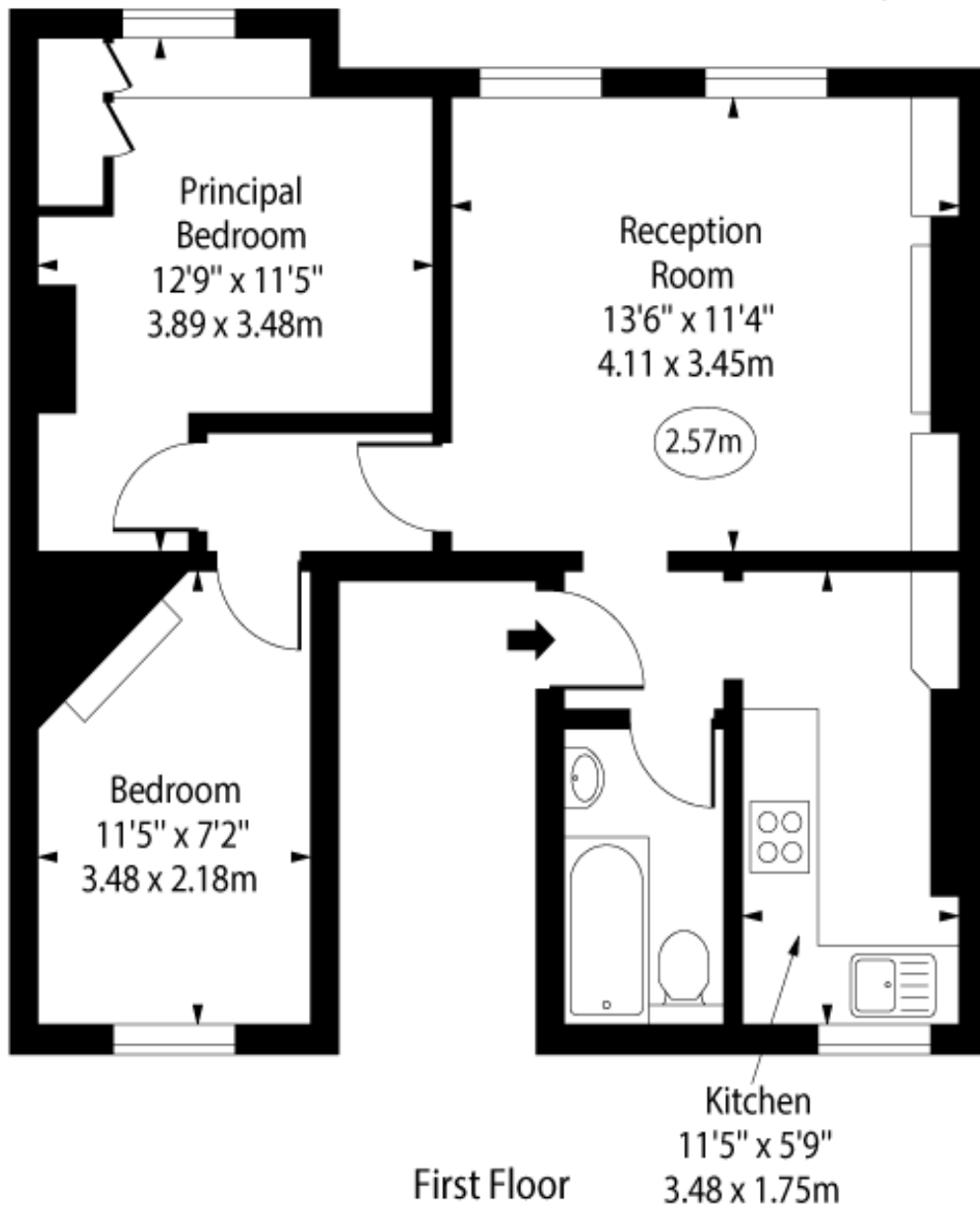
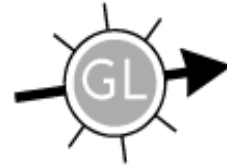
Energy Efficiency Rating		
	Current	Potential
Very energy efficient - lower running costs		
A (91-100)		
B (81-90)		
C (69-80)	69	73
D (55-68)		
E (39-54)		
F (21-38)		
G (1-20)		
Not energy efficient - higher running costs		
England, Scotland & Wales EU Directive 2002/91/EC		

Chestertons East Sheen Sales

254A Upper Richmond Road West
East Sheen
London
SW14 8AG
sheen@chestertons.co.uk
020 8104 0580
chestertons.co.uk

Sheen Lane, SW14

○ - Ceiling Height



Approx Gross Internal Area 506 Sq Ft - 47.01 Sq M

For Illustration Purposes Only - Not To Scale

www.goldens.co.uk

Ref. No. 027360E

Chesterton UK Services Limited trading as Chestertons for themselves and for the vendor of this property whose agents they are, give notice that (i) these particulars do not constitute any part of an offer or contract, (ii) all statements contained within these particulars are made without responsibility on the part of Chestertons or the vendor, (iii) whilst made in good faith, none of the statements contained within these particulars are to be relied upon as a statement or representation of fact, (iv) any intending purchasers must satisfy themselves by inspection or otherwise as to the correctness of each of the statements contained within these particulars, (v) the vendor does not make or give either Chestertons or any person in their employment any authority to make or give representation or warranty whatsoever in relation to this property. Wide angle lenses may be used. ©Copyright Chestertons | Chesterton UK Services Limited | Registered Office 40 Connaught Street, Hyde Park, London W2 2AB Registered Company Number 05334580.



This paper is
100% recyclable