



# Oaklands Road

East Sheen, SW14

Offers in excess of £1,300,000

This wider-than-average home is located on a popular and quiet residential side road close to Mortlake Station, Thomson House school, and the many independent restaurants, shops, and coffee shops on Sheen Lane. This well-positioned house is end-of-terrace with an open outlook across neighbouring gardens at the front of the house.

The house retains wonderful period features including original fireplaces and stained glass windows. The loft has been converted by a well-respected local company 'Attic. There is the possibility to add further value and space via a ground floor kitchen extension.

Offered for sale with no onward chain, making this not only a highly desirable home but also a stress-free purchase.





# Oaklands Road

## East Sheen, SW14

- End of Terrace House
- Five Bedrooms
- Garden
- Close to Mortlake Station
- Within Catchment Area for Thomson House School



**Tenure:** Freehold

**Local Authority:** London Borough of Richmond upon Thames

**Council Tax Band:** E

Energy Efficiency Rating		
	Current	Potential
Very energy efficient - lower running costs		
(92+) <b>A</b>		
(81-91) <b>B</b>		
(69-80) <b>C</b>		
(55-68) <b>D</b>		
(39-54) <b>E</b>	60	
(21-38) <b>F</b>		
(1-10) <b>G</b>		
Not energy efficient - higher running costs		
England, Scotland & Wales	EU Directive 2002/91/EC	

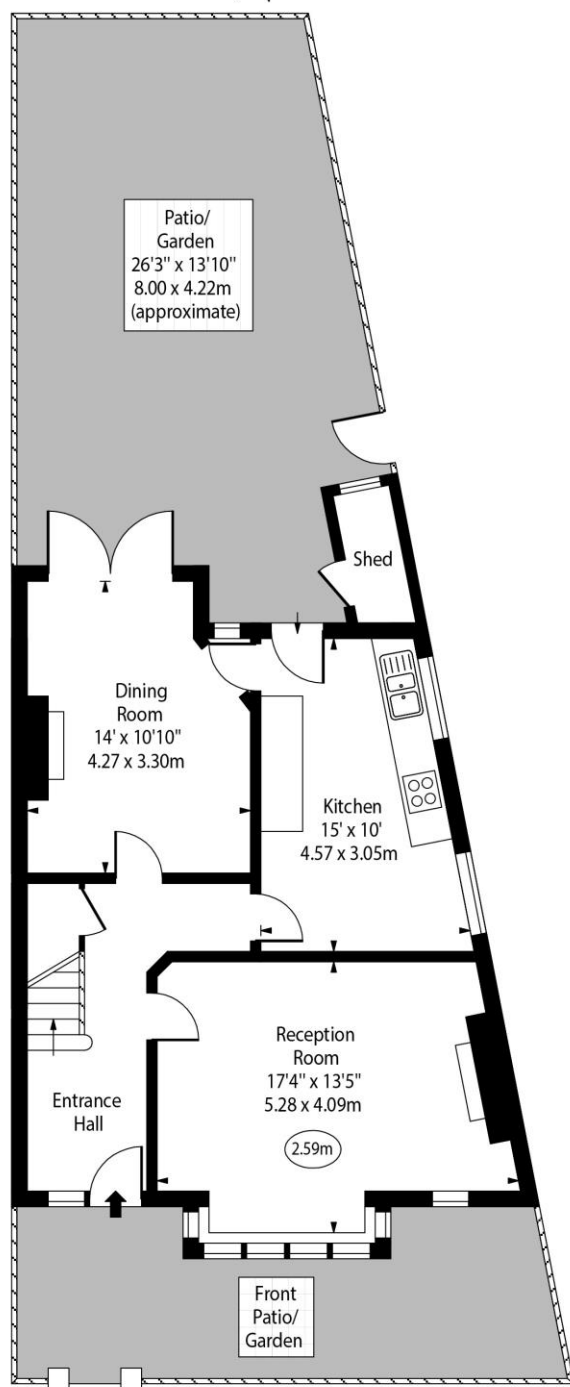
### *Chestertons East Sheen Sales*

254A Upper Richmond Road West  
 East Sheen  
 London  
 SW14 8AG  
 sheen@chestertons.co.uk  
 020 8104 0580  
 chestertons.co.uk

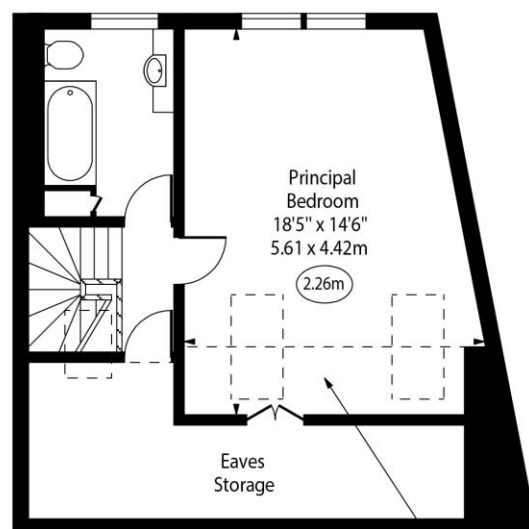
Oaklands Road,  
East Sheen, SW14



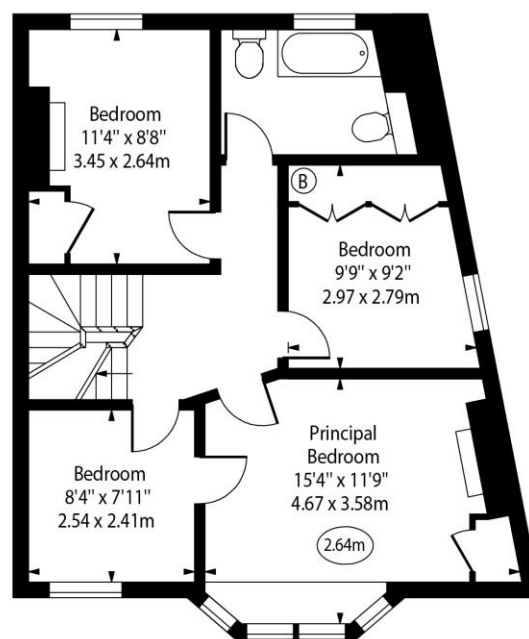
○ - Ceiling Height



Ground Floor



Second Floor Restricted Height Area



First Floor

Approx. Floor Area Including Restricted Heights 1645 Sq Ft - 152.82 Sq M

(Including Eaves Storage)

For Illustration Purposes Only - Not To Scale

[www.goldlens.co.uk](http://www.goldlens.co.uk)

Ref. No. 027288E

Chesterton UK Services Limited trading as Chestertons for themselves and for the vendor of this property whose agents they are, give notice that (i) these particulars do not constitute any part of an offer or contract, (ii) all statements contained within these particulars are made without responsibility on the part of Chestertons or the vendor, (iii) whilst made in good faith, none of the statements contained within these particulars are to be relied upon as a statement or representation of fact, (iv) any intending purchasers must satisfy themselves by inspection or otherwise as to the correctness of each of the statements contained within these particulars, (v) the vendor does not make or give either Chestertons or any person in their employment any authority to make or give representation or warranty whatsoever in relation to this property. Wide angle lenses may be used. ©Copyright Chestertons | Chesterton UK Services Limited | Registered Office 40 Connaught Street, Hyde Park, London W2 2AB Registered Company Number 05334580.



This paper is  
100% recyclable