



Palmerston Road

East Sheen, SW14

Offers in excess of £1,350,000

Being sold with vacant possession and no onward chain is this well-maintained four-bedroom family home extending to over 1600 sq. ft. located on East Sheen's Parkside close to Richmond Park and popular local schools.

The house is laid out over three floors with the loft fully converted. The house has mainly wooden flooring throughout. The living room is spacious, and the kitchen/dining area is well laid out with a separate utility room and access to the garden.

The first floor has three bedrooms, two of which are exceptionally large and the main family bathroom. The converted loft has the large fourth bedroom and a separate second bathroom.

There is double glazing throughout the property and built in wardrobes/storage with all the bedrooms. Should you wish to add further space/value then further extension possibilities remain on the ground floor as per neighbouring properties.



Palmerston Road

East Sheen, SW14

- Four bedrooms
- Parkside Family Home
- Over 1600 sq. ft.
- Close to Mortlake Station
- Short distance to Richmond Park



Tenure: Freehold

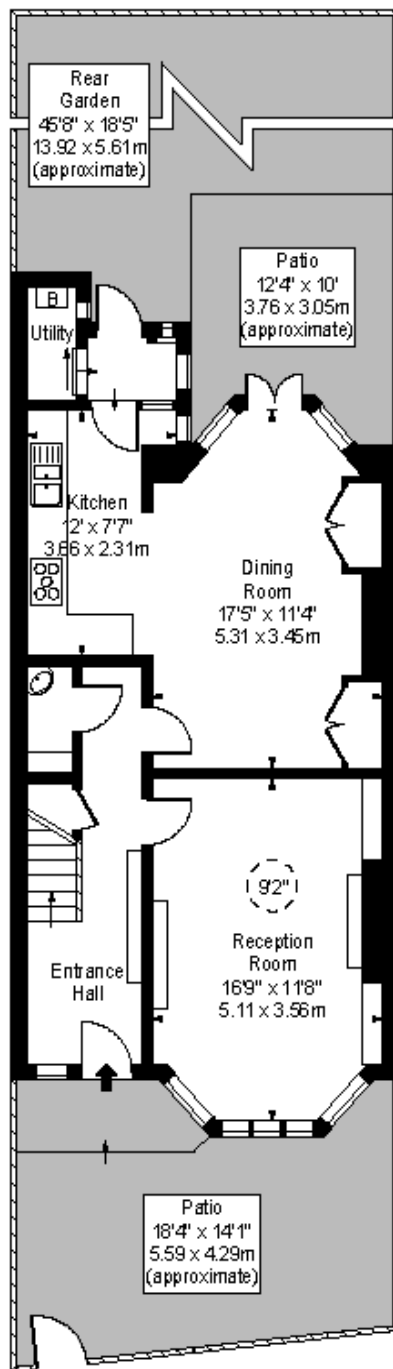
Local Authority: Richmond upon Thames

Council Tax Band: F

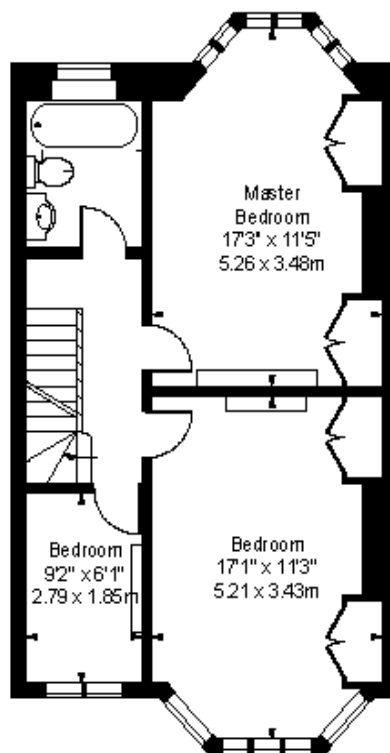
Energy Efficiency Rating		
	Current	Potential
Very energy efficient - lower running costs		
A (94-100)		
B (81-93)		82
C (69-80)		
D (55-68)	67	
E (39-54)		
F (21-38)		
G (1-20)		
Not energy efficient - higher running costs		
England, Scotland & Wales		EU Directive 2002/91/EC

Chestertons East Sheen Sales

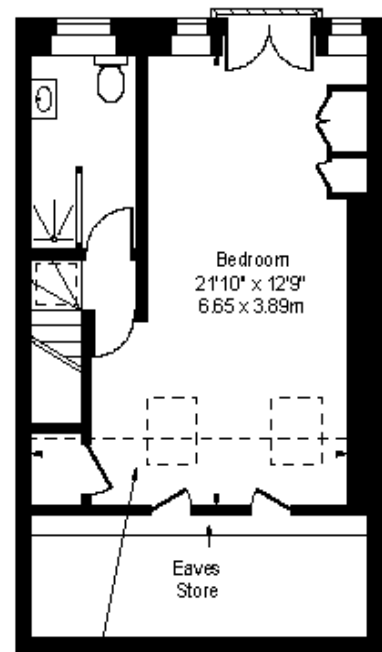
254A Upper Richmond Road West
East Sheen
London
SW14 8AG
sheen@chestertons.co.uk
020 8104 0580
chestertons.co.uk



Ground Floor



First Floor



Second Floor

Palmerston Road, SW14



- Ceiling Height

Restricted Height Area

Approx Gross Internal Area **1637 Sq Ft - 152.08 Sq M**

(Including Restricted Height Area & Eaves Store)

For Illustration Purposes Only - Not To Scale

www.goldlens.co.uk

Ref. No. 009132M

