



# East Sheen Avenue

East Sheen, SW14

Offers in excess of £2,250,000

A superb six bedroom semi-detached family home of approx. 2771 sq. ft., situated on this desirable road on the Parkside of Sheen close to Palewell Common and Richmond Park.

On the ground floor the spacious hallway leads to a bright reception room with feature fireplace, a WC, separate large kitchen, second reception and dining room flooding with natural light and French doors that take you out to the beautifully landscaped garden.

The first floor comprises four generous bedrooms and a family bathroom. Ascending to the second floor there are two large bedrooms a further bathroom and plenty of eaves storage.

East Sheen Avenue is within close proximity to Richmond Park, Palewell Common, the amenities of East Sheen, Outstanding schools such as Thomson House and Mortlake railway, station only 0.7 miles away.





# East Sheen Avenue

East Sheen, SW14

- Semi-detached House
- Six Bedrooms
- Two Reception Rooms
- Attractive Rear Garden
- Parkside location

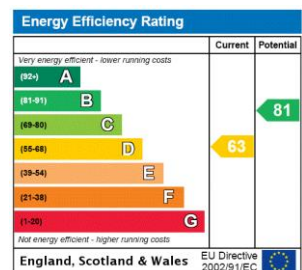




**Tenure:** Freehold

**Local Authority:** London Borough of Richmond upon Thames

**Council Tax Band:** G



### *Chestertons South West Prime Sales*

23a Friars Stile Road

Richmond

Surrey

TW10 6NH

xavier.marques-wicks@chestertons.co.uk

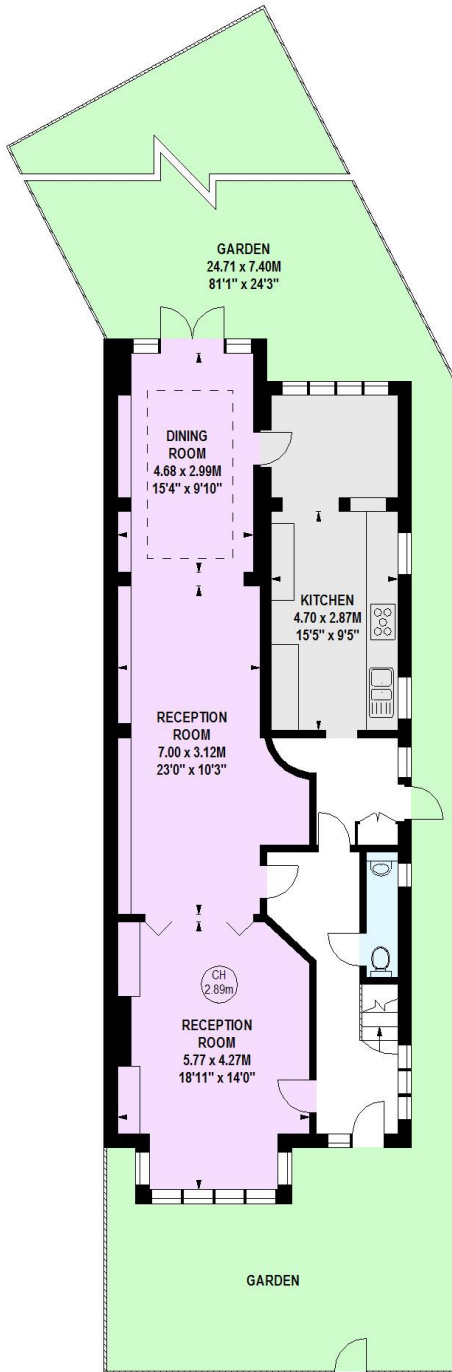
chestertons.co.uk

## East Sheen Avenue, SW14

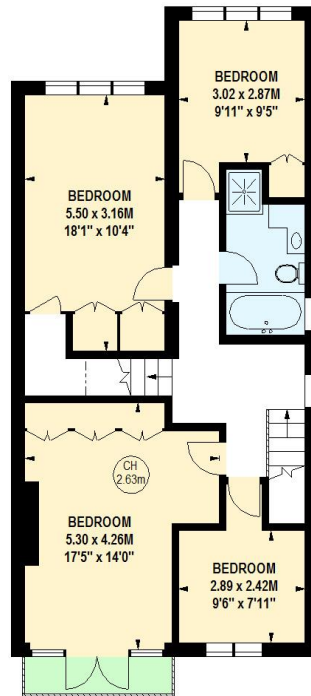
Approximate gross internal area

257.43 sq m / 2771 sq ft  
(Including Eaves Storage)

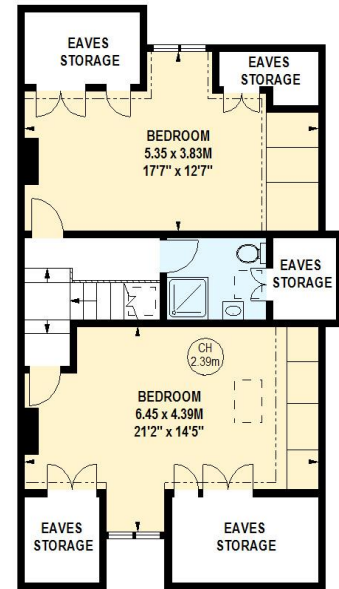
Eaves Storage  
17.47 sq m / 188 sq ft



1125 sq ft  
**Ground Floor**

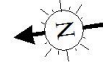


837 sq ft  
**First Floor**



621 sq ft  
**Second Floor**

Key:  
CH - Ceiling Height



This floor plan is a representation for guidance purposes only, not for valuation.  
Any figure is approximate and must not be relied on as a statement of fact.  
Copyright of Wyatt Dixon Homes



Chesterton Global Ltd trading as Chestertons for themselves and for the vendor of this property whose agents they are, give notice that (i) these particulars do not constitute any part of an offer or contract, (ii) all statements contained within these particulars are made without responsibility on the part of Chestertons or the vendor, (iii) whilst made in good faith, none of the statements contained within these particulars are to be relied upon as a statement or representation of fact, (iv) any intending purchasers must satisfy themselves by inspection or otherwise as to the correctness of each of the statements contained within these particulars, (v) the vendor does not make or give either Chestertons or any person in their employment any authority to make or give representation or warranty whatsoever in relation to this property. Wide angle lenses may be used. ©Copyright Chestertons | Chesterton Global Ltd | Registered Office 40 Connaught Street, Hyde Park, London W2 2AB Registered Company Number 05334580.



This paper is  
100% recyclable