



# Temple Sheen Road

East Sheen, SW14

Asking Price £1,350,000

Ideally positioned on the Parkside of East Sheen is this charming Edwardian three-bedroom family home, which has been beautifully renovated and decorated throughout and is located close to Sheen Mount School, the amenities of East Sheen and Richmond Park.

As you enter, a generous reconfigured hallway greets you with space made to include a cloak cupboard and conveniently placed WC. To the front of the house is a bay-fronted sitting room with a beautiful feature fireplace and engineered oak wooden flooring. Moving towards the back of the house is an impressive spacious bright open plan kitchen with an island, range cooker, a separate utility room, dining area and further reception space. The bi-fold doors lead to the well-maintained garden with an attractive outbuilding that benefits from having electricity. There is an added bonus of underfloor heating on the entire ground floor and in the bathrooms.

Ascending to the first floor with engineered oak wooden flooring, is the spacious principal bedroom to the back of the house with a contemporary en-suite wet room. All bathrooms feature stylish 'Mandarin stone' fixtures and fittings. There are two further bedrooms, a lovely bay fronted double room with a feature fireplace and a single bedroom. The main family bathroom has the same beautiful mandarin stone and there is a loft hatch on the landing to the generous loft space that offer scope to extend (STPP).

The property enjoys a mature front garden and is set back from the road providing privacy whilst the wonderful South-East facing garden also has a private outlook with established planting, patio, lawn and rear access.

Temple Sheen Road is a popular residential road within a lovely neighbourhood close to the local amenities. There is an array of shops, cafes and restaurants to be found along the Upper Richmond Road West, with Mortlake station just 0.5 miles away with its direct route to London Waterloo. Richmond Park and Sheen Common are also close by.



# Temple Sheen Road

East Sheen, SW14

- Edwardian house
- Three bedrooms
- Very good decoration
- South-East facing garden
- Parkside location
- Close to Sheen Mount school



**Tenure:** Freehold

**Local Authority:** London Borough of Richmond upon Thames

**Council Tax Band:** F

Energy Efficiency Rating		
	Current	Potential
Very energy efficient - lower running costs (92-)		
A (81-91)		
B (69-80)		83
C (55-68)	70	
D (39-54)		
E (21-38)		
F (1-20)		
Not energy efficient - higher running costs		
England, Scotland & Wales		EU Directive 2002/91/EC

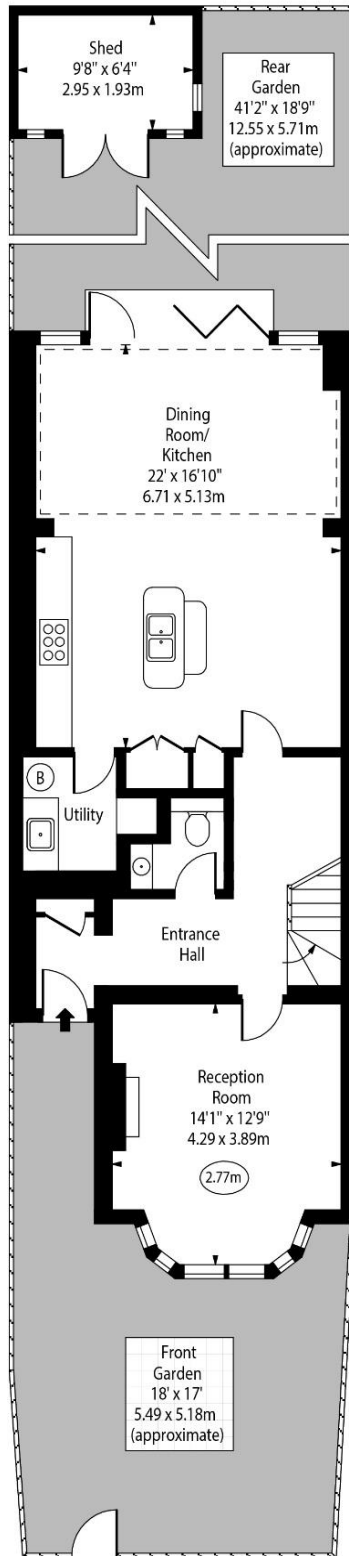
**Chestertons East Sheen Sales**

254A Upper Richmond Road West  
 East Sheen  
 London  
 SW14 8AG  
 sheen@chestertons.co.uk  
 020 8104 0580  
 chestertons.co.uk

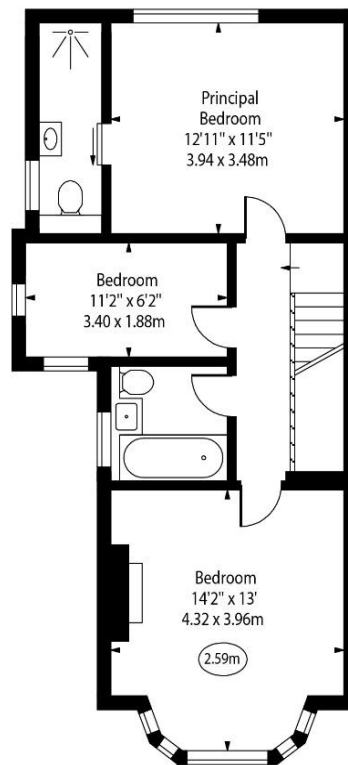
Temple Sheen Road,  
East Sheen, SW14



○ - Ceiling Height



Ground Floor



First Floor

Approx Gross Internal Area 1360 Sq Ft - 126.34 Sq M  
(Excluding Shed)

For Illustration Purposes Only - Not To Scale  
www.goldlens.co.uk  
Ref. No. 025581E

Chesterton UK Services Limited trading as Chestertons for themselves and for the vendor of this property whose agents they are, give notice that (i) these particulars do not constitute any part of an offer or contract, (ii) all statements contained within these particulars are made without responsibility on the part of Chestertons or the vendor, (iii) whilst made in good faith, none of the statements contained within these particulars are to be relied upon as a statement or representation of fact, (iv) any intending purchasers must satisfy themselves by inspection or otherwise as to the correctness of each of the statements contained within these particulars, (v) the vendor does not make or give either Chestertons or any person in their employment any authority to make or give representation or warranty whatsoever in relation to this property. Wide angle lenses may be used. ©Copyright Chestertons | Chesterton UK Services Limited | Registered Office 40 Connaught Street, Hyde Park, London W2 2AB Registered Company Number 05334580.



This paper is  
100% recyclable