



# Oaklands Road

East Sheen, SW14

Guide Price £1,500,000

A beautiful refurbished and extended house finished to a high standard throughout by locally renowned build and design team 'Attic', who along with the current owners have made a wonderful family home in East Sheen.

The stunning ground floor accommodation has expansive open plan kitchen and reception areas with period features in the sitting room, a modern kitchen with plenty of workspace in the kitchen and a further reception area with bi-fold doors onto the West facing garden. Being able to see through the whole ground floor and onto the garden, the layout is ideal for young buyers

Further accommodation on the ground floor includes a wide entrance hallway, utility room and down stairs shower room with WC.

The first floor accommodation continues to impress with two double bedrooms with fitted wardrobes, a further single bedroom currently used as an office and a stylish family bathroom, whilst the top floor has large bright principal bedroom with an en-suite and a Juliette balcony and built in storage.

Mortlake Station, an Outstanding Ofsted rated primary school, independent shops are all within only a few minutes' walk, and Richmond Park and The River Thames are close by.





# Oaklands Road

## East Sheen, SW14

- Extended and Refurbished Throughout
- Fully Open Plan Kitchen and Reception Room
- Four Bedrooms
- Three Bathrooms
- West Facing Garden



**Tenure:** Freehold

**Local Authority:** London Borough of Richmond upon Thames

**Council Tax Band:** F

Energy Efficiency Rating		
	Current	Potential
Very energy efficient - lower running costs		
(92+) A		
(81-91) B		
(69-80) C		
(55-68) D		
(39-54) E		
(21-38) F		
(1-20) G		
Not energy efficient - higher running costs		
England, Scotland & Wales	EU Directive 2002/91/EC	

**Chestertons East Sheen Sales**

254A Upper Richmond Road West

East Sheen

London

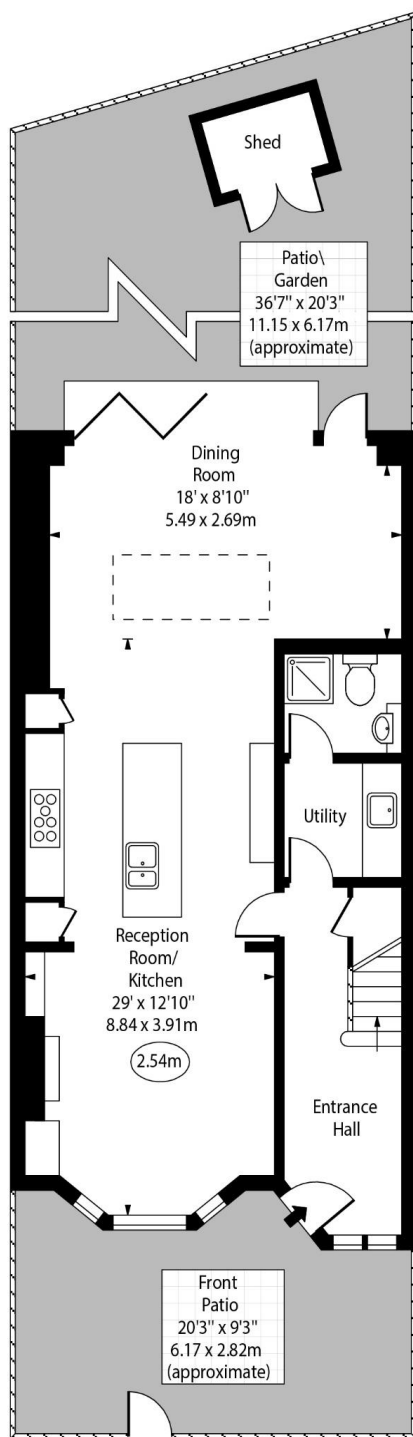
SW14 8AG

sheen@chestertons.co.uk

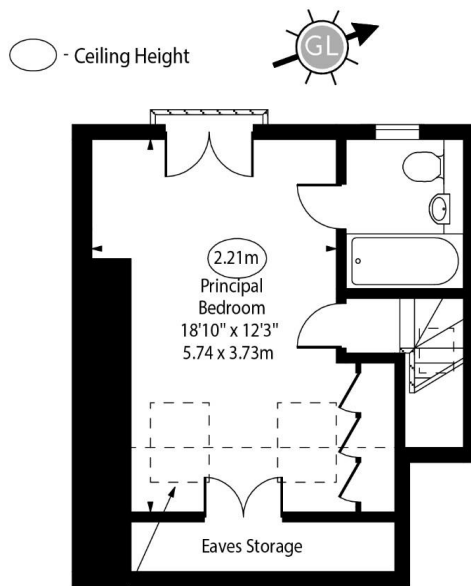
020 8104 0580

chestertons.co.uk

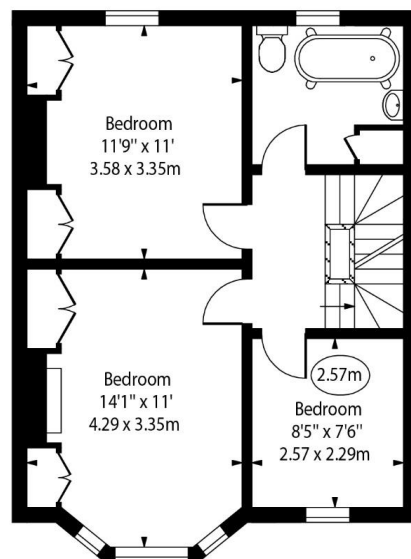
Oaklands Road,  
East Sheen, SW14



Ground Floor



Second Floor



First Floor

Approx Gross Internal Area 1464 Sq Ft - 136.00 Sq M

Approx. Floor Area Including Restricted Heights 1548 Sq Ft - 143.81 Sq M  
(Including Eaves Storage)

For Illustration Purposes Only - Not To Scale

[www.goldlens.co.uk](http://www.goldlens.co.uk)

Ref. No. 025561E

Chesterton UK Services Limited trading as Chestertons for themselves and for the vendor of this property whose agents they are, give notice that (i) these particulars do not constitute any part of an offer or contract, (ii) all statements contained within these particulars are made without responsibility on the part of Chestertons or the vendor, (iii) whilst made in good faith, none of the statements contained within these particulars are to be relied upon as a statement or representation of fact, (iv) any intending purchasers must satisfy themselves by inspection or otherwise as to the correctness of each of the statements contained within these particulars, (v) the vendor does not make or give either Chestertons or any person in their employment any authority to make or give representation or warranty whatsoever in relation to this property. Wide angle lenses may be used. ©Copyright Chestertons | Chesterton UK Services Limited | Registered Office 40 Connaught Street, Hyde Park, London W2 2AB Registered Company Number 05334580.



This paper is  
100% recyclable